

"RAISED" WEAVING

GRACE CORBETT REED

A new and very unusual way of handling Colonial overshot patterns is to weave them after the Italian manner to give a "Raised" effect, treadling the pattern treadles in order 1, 2, 3, 4, with no tabby between and using a different shade for each different treadle and arranging the shades in order from light to dark or the reverse. This produces a softly shaded perpendicular stripe with a very pure color quality as the warp is practically covered. The overlapping of adjacent pattern blocks causes the different shades to melt into one another in a subtle way unlike any other striped effect in weaving and with a surface texture that is akin to that produced in long stitch embroidery.

The interest and variety of the stripes depend upon the pattern used. Rosengang and the other "Diamond" weaves give regular and rather monotonously shaded stripes. A pattern with a large "table" will give a very wide two-toned stripe that might overpower or weaken the rest of the striping in the design. Patterns written on opposites like "Monks Belt" are not adaptable.

The best patterns to use are the smaller patterns with 26 to 50 threads in each repeat with various sized pattern blocks. Patterns with blocks of more than six or seven threads should not be chosen.

In order to have the warp covered without making too hard a fabric it shouldn't be set too closely in the reed. The finer warps—20/2 cotton and Afghan—should be sleyed no closer than 22 or 24 to the inch. Fabri can be sleyed 20 to the inch and woven with Fabri or set 15 to the inch and woven with Shetland Floss. Heavier warps should be set 8, 10, or 12 to the inch and woven with double or single Zephyr or Shetland according to the spacing of the warp.

If a light or closely harmonious set of colors are chosen for the stripes a pattern border in a dark or strongly contrasting color can be woven across the stripes. This is done by substituting the dark color for first one and then another of the shading shuttles in the same order that an overshot border would be woven in that pattern.

The three patterns selected to illustrate this weave were chosen both for their interesting striped effect and the effective pattern borders that can be woven from them.

PATTERN NO. 1



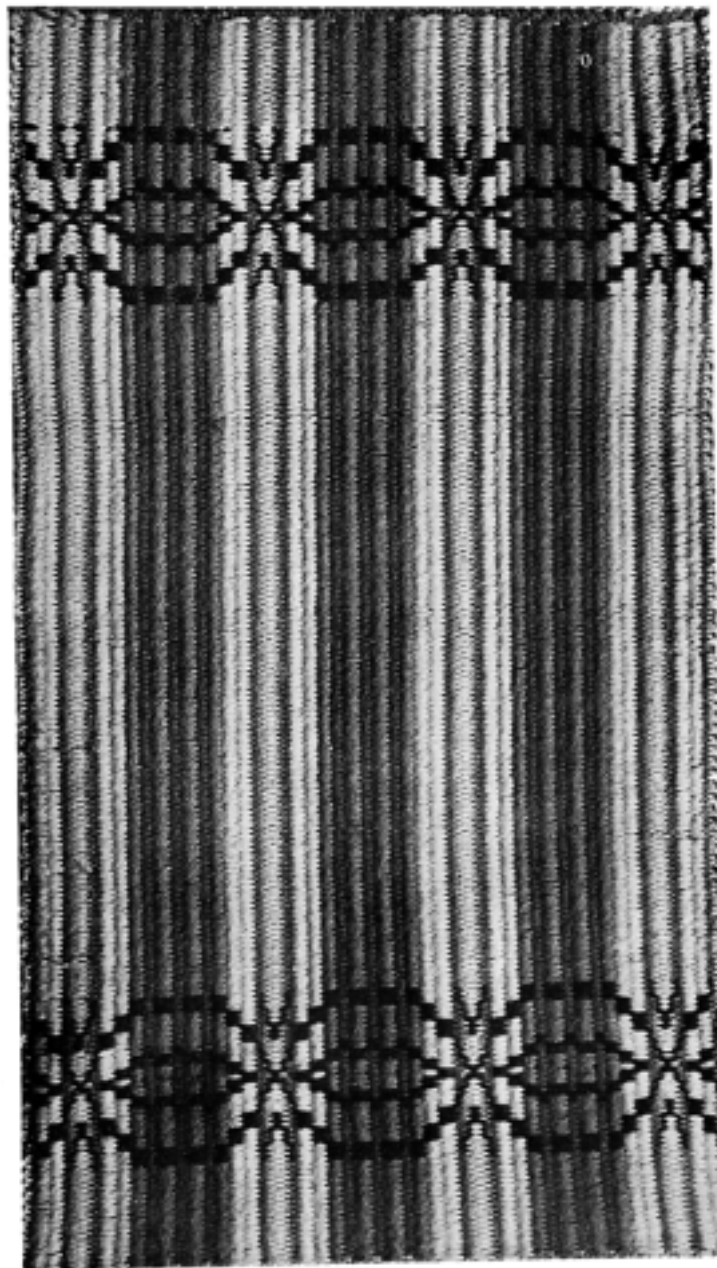
No tabby.

This threading handled in the "Raised" weave gives very handsome shaded stripes of great variety in form. It makes very lovely and unusual striped upholstery or drapery fabrics.

Fabri sleyed 20 threads to the inch and woven with either Fabri or Weaving Special gives a fabric of the right weight for upholstery material.

Use four shuttles, each having four shades of one color, and number each shuttle 1-2-3-4 from light to dark. No. 1—lightest shade; No. 2—second shade; No. 3—third shade; No. 4—darkest shade. Arrange the shuttles in order with the darkest—No. 4—nearest you. Treadle 1—throw shuttle 1; Treadle 2—throw shuttle 2; Treadle 3—throw shuttle 3; Treadle 4—throw shuttle 4. Place each shuttle in front of the previous one and they will be in order on the other side as at the start. This regular arrangement of shuttles is necessary for speed.

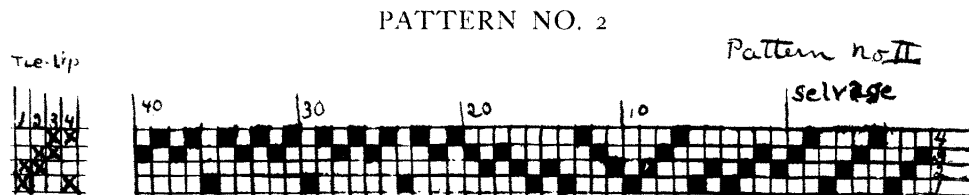
Continue to treadle 1, 2, 3, 4, 1, 2, 3, 4, etc., throughout the work, using on each treadle the corresponding number of shuttle and *no other*.



FLOOR MAT IN "RAISED" WEAVE

About the same number of threads are woven per inch as in overshot weaving including both tabby and pattern, so it weaves just as rapidly as overshot patterns or even more so as there is no counting of threads and change of pattern: just a regular treadling 1, 2, 3, 4 in order and a rhythmic throwing of four shuttles in rotation. It takes only a few minutes to get the knack of it and the speed increases rapidly.

A Fabri warp set 15 threads to the inch and woven in Shetland with a light beat would make a very attractive lounge throw in this threading. Plain horizontal stripes of varying widths could be put in both at the top and bottom or other location to relieve the monotony of vertical shaded stripes in such a large piece. The horizontal stripes can be woven in the darkest shade or a contrasting color by using the same shuttle and treadle 1-2-3-4-1-2-3-4 until a stripe of sufficient width is woven in the plain color.



No tabby.

This is the threading for the piece illustrated and was chosen not only because it gave an interesting striped effect but because it gave a chance to weave an effective border in pattern across each end.

It was warped with tan mercerized cotton No. 5; threaded 2 threads through each heddle and sleyed 15 threads to the inch. The weft was double Zephyr in four shades of green and greenish blue. Beaten moderately hard it would be heavy enough for floor mats of a better quality. Beaten lightly it could be used for runners or wall hangings where a bold heavy effect is desired. It also makes a wonderfully heavy and rich looking automobile or steamer robe.

In this piece Shuttle 1 was Light Green No. 612
 Shuttle 2 was Green No. 753
 Shuttle 3 was Green No. 755
 Shuttle 4 was Blue Green No. 854
 Pattern Shuttle Dark Green No. 757

Treadling 1, 2, 3, 4, 1, 2, 3, 4, etc., using for each treadle its corresponding number of shuttle gave the plain shaded stripe as in the previous pattern.

The pattern border was obtained by substituting Dark Green for first one and then another of the shading shuttles but the order of treadling never varies except as it reverses at the center of the pattern. (See note.)

DIRECTIONS FOR PATTERN BORDER

Shaded Background of Border	Dark Green
Treadle 1-2	Tr. 3
Treadle 4-1-2	Tr. 3
Treadle 4-1-2	Tr. 3
Treadle 4-1	Tr. 2
Treadle 3-4-1	Tr. 2
Treadle 3-4-1	Tr. 2
Treadle 3-4	Tr. 1
Treadle 2-3-4	Tr. 1
Treadle 2-3-4	Tr. 1
Treadle 2-3	Tr. 4
Treadle 1-2-3	Tr. 4
Treadle 1-2	Tr. 3

Treadle 4-1-2	Tr. 3
Treadle 4-1	Tr. 2
Treadle 3-4-1	Tr. 2
Treadle 3-4	Tr. 1
*Treadle 3-4-2	Tr. 1
Treadle 4-3	Tr. 2
Treadle 1-4-3	Tr. 2
Treadle 1-4	Tr. 3
Treadle 2-1-4	Tr. 3
Treadle 2-1	Tr. 4
Treadle 3-2-1	Tr. 4
Treadle 3-2	Tr. 1
Treadle 4-3-2	Tr. 1
Treadle 4-3-2	Tr. 1
Treadle 4-3	Tr. 2
Treadle 1-4-3	Tr. 2
Treadle 1-4-3	Tr. 2
Treadle 1-4	Tr. 3
Treadle 2-1-4	Tr. 3
Treadle 2-1-4	Tr. 3

*Order of shuttles changes and reverses at this point.

The order of the plain shaded stripe continues 4-3-2-1 through the center of the piece until the first block of the second border then it changes to 1-2-3-4 reversing again at the center as in the first border.

PATTERN 3—"HONEYSUCKLE"

As this familiar pattern was given in the first number of "The Weaver" the threading will not be repeated here.

This pattern was chosen because only three colors are necessary to make an effective stripe.

For Baby Blankets

Warp-Fabri, sleyed 15 to the inch.

Weft Shetland Floss—White, Baby Blue—792.

Pattern border in Art Silk No. 240.

Although only three colors are used it is best to have four shuttles for speed in rotation.

Shuttle 1—White.

Shuttle 2—Light Blue.

Shuttle 3—Medium Blue.

Shuttle 4—White.

A heading of plain tabby may be woven for a hem. Then start the shaded stripe treadling 1-2-3-4, 1-2-3-4 with Shuttles 1-2-3-4, etc., for 3 inches.

Then weave a horizontal line in Art Silk by treadling 1-2-3-4 once and weaving all four in the silk.

Then weave one-half inch shaded stripe and start the pattern border as follows:

Striped Background	Pattern Blue Silk
Treadle 1 Shuttle 1 Treadle 2
Treadle 3-4 Treadle 1
Treadle 2-3 Treadle 4
Treadle 1-2 Treadle 3
Treadle 4-1-2 Treadle 3
Treadle 4-1 Treadle 2
Treadle 3-4-1 Treadle 2
Treadle 3-4 Treadle 1

Treadle 2-3-4	Treadle 1
*Treadle 2-4-3	Treadle 1
Treadle 4-3-2	Treadle 1
Treadle 4-3	Treadle 2
Treadle 1-4-3	Treadle 2
Treadle 1-4	Treadle 3
Treadle 2-1-4	Treadle 3
Treadle 2-1	Treadle 4
Treadle 3-2	Treadle 1
Treadle 4-3	Treadle 2

*Note: In center of pattern the order of treadling reverses with the reversal of the pattern.

Weave one-half inch shaded stripe treadled 4-3-2-1. Then 4 shots Blue silk 4-3-2-1.

Remainder of blanket shaded stripe 4-3-2-1.

This pattern can be worked out in any yarn quality or color scheme to make all sorts of other things.

* * * * *

Any sort of color scheme can be worked out in raised weaving so long as it does not exceed four shades in the stripes. Harmonious groups of one tonal quality are easy to handle; but the weaver can easily develop schemes of a brilliant Roman striping. The following series of color schemes are useful in any work.

BABY BLANKETS

Group A. Stripes in Shetland, Colors Baby Blue, 792, and white. Pattern in Art Silk, Color Baby Blue.

Group B. Stripes in Shetland, Colors Baby Pink, 733, and white. Pattern in Art Silk, Color Baby Pink.

WEAVING IN GENERAL

For upholstery goods, hangings, table or floor mats, couch covers, robes, wearing apparel, etc.

Color Group	A	B	C	D	E	F
	Blue	Green	Brown	Orange	Rose	Purple
Stripes	592	612	135	111	808	713
	594	753	624	13	884	773
	596	755	835	14	566	715
	597	854	627	15	886	717
Pattern	16	757	854	527	856	614

SOME BASKET WEAVES IN LINEN FLOSS

GRACE CORBETT REED

Two-Harness Basket Weaves



The new Linen Floss makes most effective basket weaves possessing a great deal of character and sheen.

No. 1—a 2-thread basket weave, sleyed 20 threads to the inch, gives a fabric with a “Studio” effect that is firm enough for upholstery work and excellent where a rough texture is wanted.

No. 2 is a basket weave of very varied texture. It looks best when sleyed 15 threads to the inch and woven quite loosely. It is a very attractive material for bags, pillow tops, and draperies.

WEAVING DIRECTIONS

For No. 1 treadle 1, 2, 1, 2, etc., and throw the shuttle twice in each shed. Catch up the outer thread with the shuttle before throwing the second shot in order to make a good edge. Also beat the first thread into place before throwing the second.

No. 2	
<i>Treadling</i>	<i>No. of Threads</i>
1	1
2	1
1	3
2	1
1	3
1	1
2	3

Repeat.

Beat lightly between each of the three threads. Also catch up the outer thread between each shot in the same shed.

The charm of these weaves rests largely in the choice of colors for warp and weft.

A tan linen warp woven across with the Dark Rose or Dark Green or Delft Blue gives a fabric of wonderful sheen. A Light Rose warp, woven with the Dark Rose is soft and lovely. The Dark Green woven with Delft Blue gives an effect of great brilliance and iridescence. The weaver should wash and press the fabric before putting it to any use as that will soften it and close up the weave.

