

GARDEN STUDIO QUARTERLY

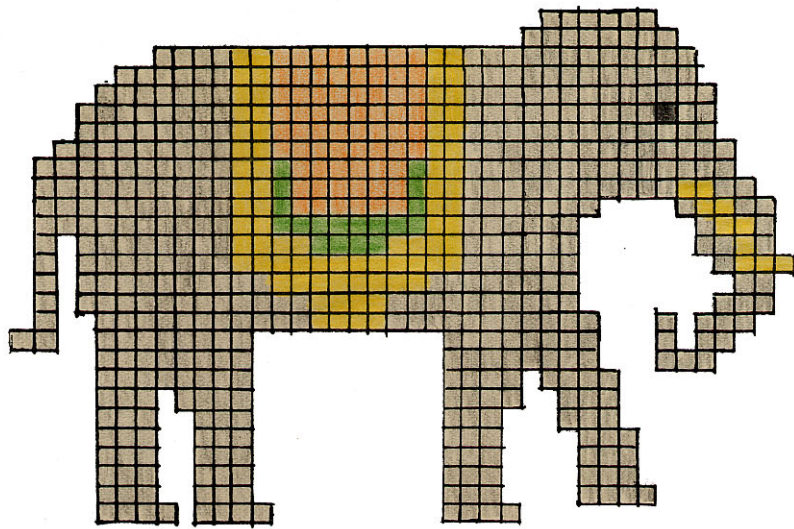
and

WEAVING SERVICE

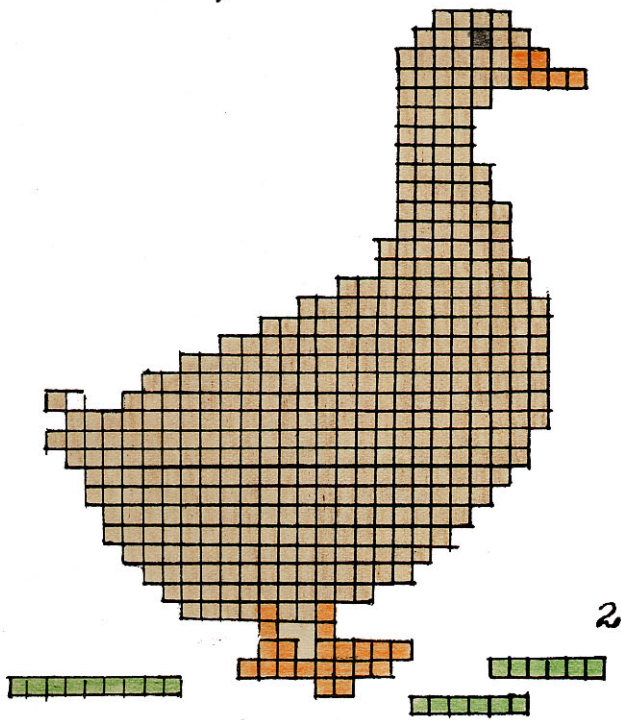
Volume 1 Number 3

July 1933.

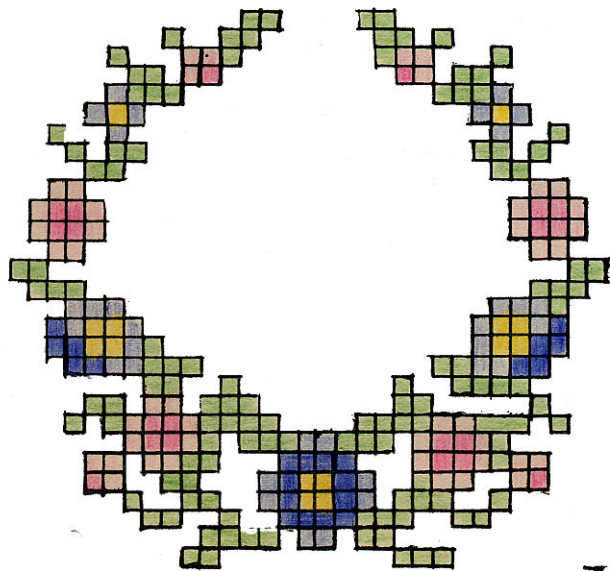
Myra L. Davis & Kate Van Cleve



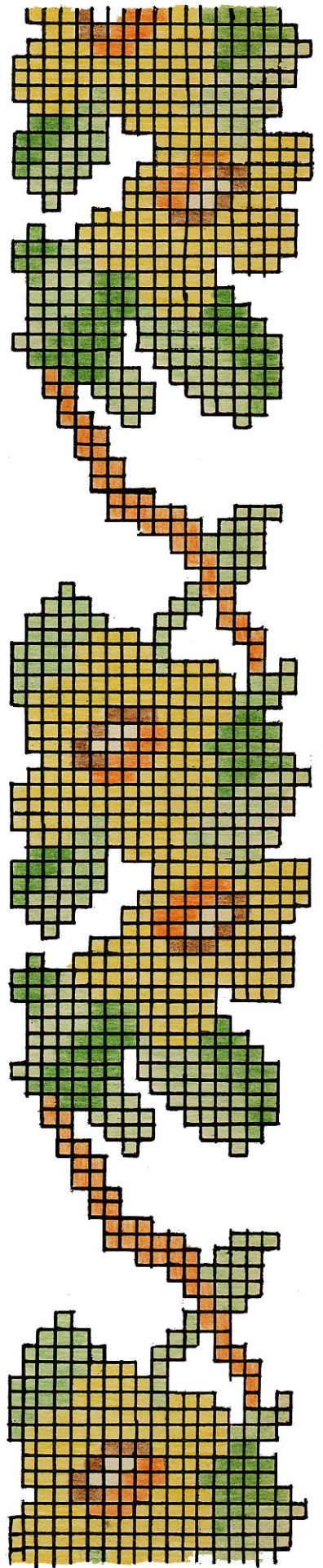
1



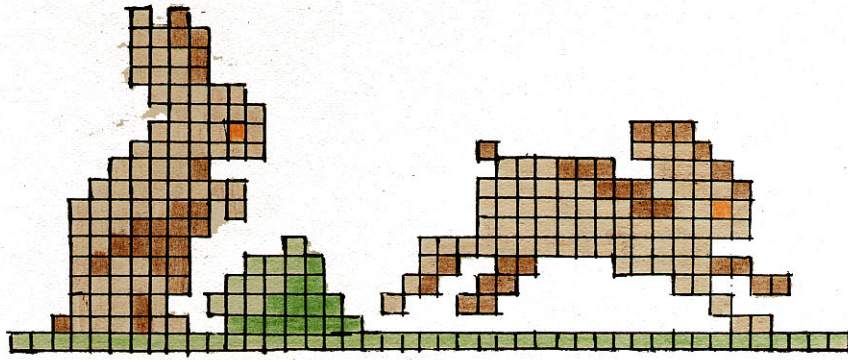
2



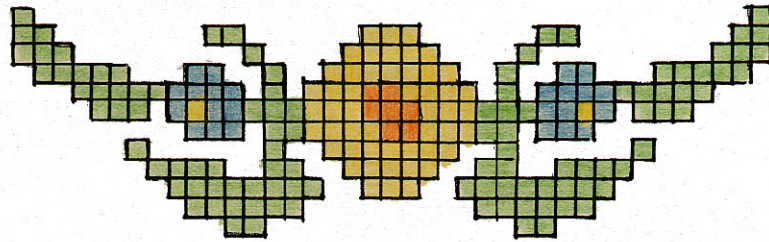
3



4

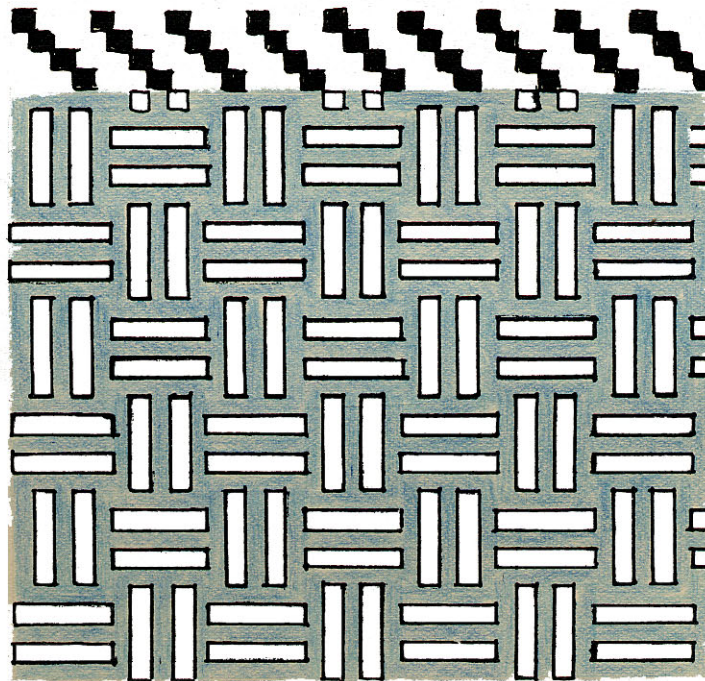


5



6

DRAFT FROM
 VÆVEBOG FOR HJEMMENE
 JENNY LA COUR AND JOHANNE SIEGUMFELDT



1-3
 2-4
 1-3
 2-4
 1-3
 2-4
 1-3
 2-4
 REPEAT

BABY BLANKET.

Draft - Twill from Danish book given on preceding page.

Warp - Bernat's Weaving Special in pink or blue and white.
540 ends set 15 ends to the inch.

Weft is like warp.

Amounts necessary - $\frac{2}{3}$ lb. of the color and $\frac{1}{3}$ lb. of white is sufficient for warp and weft for 2 blankets. This will make a warp 3 yds. long. If only one blanket is desired, make the chain 2 yds. long.

This method of weaving on a twill threading was taken from a Danish publication.

Make the warp of the 2 colors, using them in this order, - 2 color, 1 white, 1 color, 1 white and repeat for entire warp.

When beaming the warp, hold it a little less tightly than a cotton warp, because of the elasticity of the wool.

Begin the blanket with $\frac{1}{2}$ inch heading of the white. Then weave 50 inches (which allows for shrinkage) using the treadling given on the draft, and the colors in this order - 2 shots of color, 1 shot of white, 1 of color, 1 of white. Repeat this for the entire length, and finish with the $\frac{1}{2}$ inch heading.

Beat lightly, and be careful that the tension on the warp is not too great.

Overcast the ends of the blanket with a running stitch. Wash it in warm water in which a small amount of mild soap flakes has been dissolved. Rinse, squeeze and press lightly while still damp.

Bind all around with 2 inch satin ribbon. It is better to sew the binding on by hand than to stitch it on by machine.

CRIB COVER.

Warp - Bernat's white mercerized cotton No. 20. 888 ends
2 $\frac{1}{2}$ yds. long set 24 ends to the inch, for one cover.

Weft - Bernat's Perle cotton No. 10 in pink or blue.

Amounts necessary - two 2 $\frac{3}{4}$ oz. tubes of warp, and $\frac{1}{2}$ lb. of
weft will make one cover.

Duck - Perle cotton No. 3. White for the body, yellow for
the feet, black for the eye and light green for the
grass.

Weave 27 inches plain weave for the lower half of the cover,
then begin the duck in Swedish Embroidery, placing it in the center.
When the duck is finished, weave 30 inches more. These measurements
allow for shrinkage and for a 2 $\frac{1}{2}$ inch hem at the top and 1 $\frac{1}{2}$ inch hem
at the bottom.

If one prefers, the elephant may be used in the center,
or the rabbits may be woven just below the hem at the top.

The border No. 4 is very good in French Tapestry for a
table square, weaving it on all four sides, or for the ends of
runners. It also works out well for lingerie pillows.

The elephant, duck and rabbits are attractive on nursery
runners, curtains and pillows as well as on the crib cover. Swedish
Embroidery should be used for these.

The wreath No. 3 and the garland No. 6 may be used success-
fully on bags, guest towels, narrow runners for the old-fashioned
step bureaus, pin cushions and other small articles. They should be
done in French Tapestry.

DRAFT OF SATURN OR "STAR AND RINGS" FROM A
COVERLET WOVEN IN THE VALLEY OF VIRGINIA

EDGE

A

B

C

D

1-2

1-4

1-2

1-4

1-2

2-3

3-4

1-4

1-2

2-3

3-4

1-4

1-2

2-3

3-4

1-4

1-2

2-3

3-4

1-4

1-2

2-3

3-4

1-4

1-2

1-4

CENTER

1-2

1-4

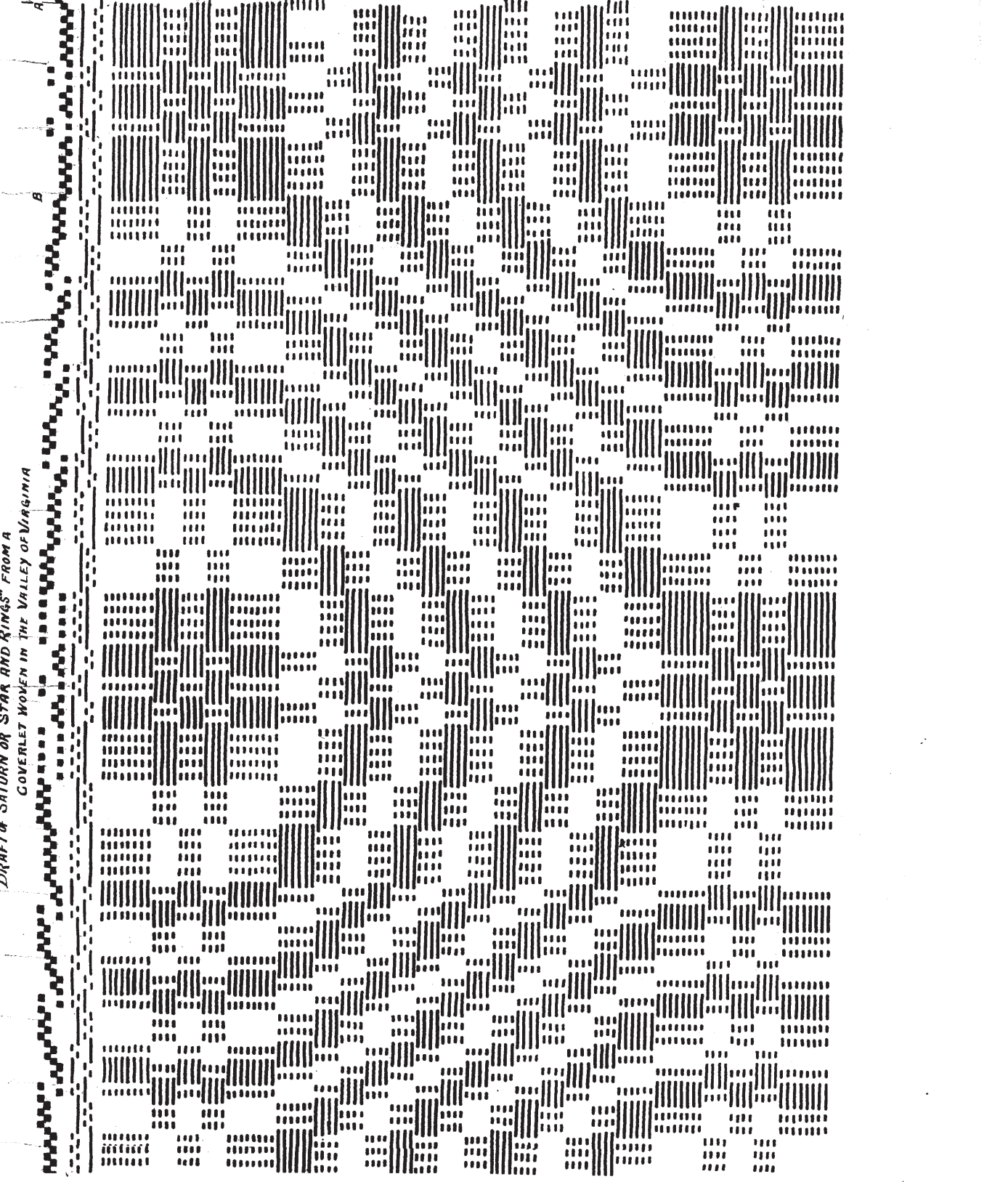
3-4

2-3

1-4

1-2

2-3



TUCK-IN PILLOW
(about 15 x 19 inches)

Draft - Saturn or Star and Rings.

20 Dent reed sleyed 2 threads to a dent.

Materials:

Warp - 781 threads, this allows for double edge thread.

Fine mercerized cotton 20/2 (Bernat) in a lighter
tone of the color to be used for the pillow.

A 3 yard warp will make two pillows. $\frac{1}{2}$ pound of mercerized
cotton will make the warp and leave enough for binder.

Weft - number 10 mercerized cotton in colors.

Violet, rose, green, yellow or blue for bedrooms.

Light blue or pink for baby pillows.

Henna, tans and browns, dull blues and Italian reds
for living rooms.

3 Tubes of pattern color will make two pillows and leave
enough for cords to finish the edges. Binder like
warp.

Threading - right edge 4-3-2-1-4-3.

4 complete repeats of pattern (184 threads)
add from A-B (31 threads) to complete pattern.

Second edge, reverse of right edge.

Weave - Heading $1\frac{1}{2}$ inches of binder.

2 repeats of the pattern, then from C-D to balance
the pattern.

Note:- It may be necessary to add a third repeat of the
pattern in some cases as it will vary with the beat and material.

Repeat the above for the other side of the pillow and
finish with the heading.

CHAISE LONGUE THROW

Draft - Saturn or Star and Rings.

20 Dent reed, sleyed 2 threads to a dent.

Warp - 1 pound natural mercerized cotton 20/2 (Bernat)

For throw 42 inches wide make warp of 1701 threads.

For throw 38 inches wide make warp of 1517 threads.

Weft - 1 pound Afghan wool in color for pattern.

1 pound Kashmir wool in white for binder.

Threading - Same as for Tuck-in Pillow with more repeats
of the pattern.

For 42 inch width use 9 repeats of pattern.

For 38 inch width use 8 repeats of pattern.

Weave - 72 inches long and finish the pattern, this allows
for shrinkage.

2½ inches plain weaving for ends, alternating Afghan and
Kashmir threads and after taking work from the loom, run the ends
and hem to the edge of the pattern; or weave 1 inch of plain weaving
for ends, overcast with running stitch and bind with 2 inch ribbon.

All sewing should be done by hand.

Materials, Afghan, Kashmir and mercerized cotton may be
obtained from:- Emile Bernat and Sons Company,
89-99 Bickford Street,
Jamaica Plain, Massachusetts.