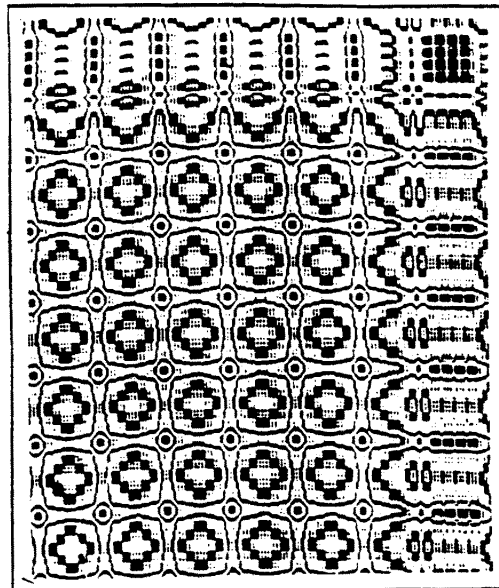


HANDWEAVING NEWS



AN INTERESTING 4 HARNES COLONIAL OVER-SHOT PATTERN.

THE PATTERN SHOWN ABOVE WAS GIVEN IN THE AUGUST 1943 NEWS. IT WAS DERIVED FROM SOME OF THE PATTERN DRAWINGS IN THE SPECK BOOK FROM THE PENNSYLVANIA MUSEUM IN PHILADELPHIA. SOME OF THE MEMBERS OF THE DETROIT HANDWEAVER'S GUILD HAVE BEEN DOING SOME VERY INTERESTING THINGS WITH THIS PATTERN. AND AS I HAVE HAD SOME REQUESTS FOR A SIMPLE COLONIAL PATTERN, I AM REPEATING THIS, GIVING THE VARIATIONS WHICH HAVE BEEN USED.

IN THE FIRST PLACE, YOU WILL NOTE THAT THIS BORDER DESIGN IS NOT ENTIRELY BALANCED ON EACH SIDE OF THE CENTER. THIS WAS A BORDER WHICH WE DESIGNED FOR THIS AND WAS NOT GIVEN IN THE ORIGINAL DRAWING. THE THREADING DRAFT AS ARRANGED BELOW IS WORKED OUT FOR A RUG USING 390 WARP THREADS OF CARPET WARP SET 12 THREADS TO THE INCH. FOR A WIDER PIECE USING MORE WARP THREADS, THE REPEAT FROM A TO B CAN BE USED AGAIN AS DESIRED. THIS CENTER REPEAT USED ALONE AS A REPEAT, MAKES A VERY USEFUL SMALL THREADING FOR TOWEL OR LUNCHEON SET BORDERS WHICH WILL BE GIVEN ON THE NEXT PAGE, AND ALSO A REPEAT FOR A TREADLING FOR UPHOLSTERY MATERIAL OR BAGS WILL BE GIVEN.

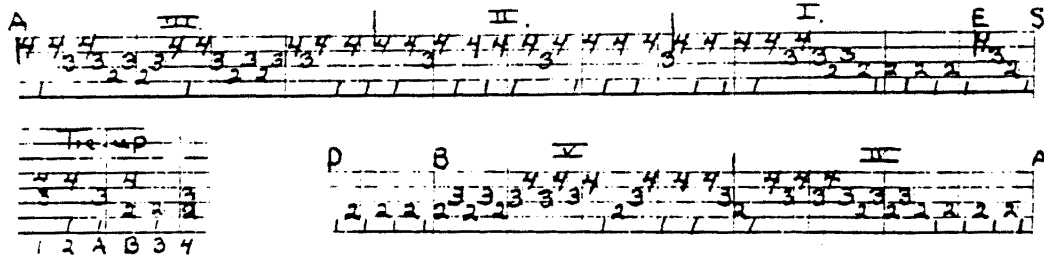
ARRANGMENT FOR THE PATTERN DRAFT FOR A WARP OF 390 WARP THREADS.

		COUNT OF HEDDLES						
		GROUP	1	2	3	4	5	6
THEN S TO E SELVAGE	2X	-	8					
E TO A - BORDER			-64					
A TO B REPEAT 6 TIMES	40	-	240					
B TO D ONCE			- 7					
A TO E BORDER			- 64					
END SELVAGE	4,3,2,1,4,3,2,-		7					
			<u>20</u>	<u>20</u>	<u>24</u>	<u>20</u>	<u>20</u>	<u>7</u>
			WARP TOTAL 390					

TOTAL HEDDLES ACCORDING TO THE
THREADING ARRANGMENT,-
HARNES 1 - 90
2 - 92
3 - 104
4 - 104

(NOTE,- IT IS VERY MUCH EASIER TO THREAD THE LOOM WHEN THE THREADING DRAFT IS DIVIDED UP INTO GROUPS AND THE HEDDLES COUNTED OUT FOR EACH GROUP AS IS GIVEN ABOVE. TO GET THE TOTAL ADD UP THE TIMES EACH GROUP REPEATS.)

THREADING DRAFT FOR DESIGN ON PAGE 1.



THE TIE-UP AS SHOWN ABOVE AT THE LEFT OF THE THREADING DRAFT WILL FROM NOW ON BE THE REGULAR TIE-UP WHICH I SHALL USE. THIS IS ARRANGED FOR HARNESSES WHICH RISE. TREADLE 1 WILL RAISE HARNESSSES 3 & 4, AND IS THE FIRST TREADLE ON THE LEFT HAND SIDE OF THE LOOM. TREADLE 2 WILL RAISE HARNESSSES 1 & 4. TREADLE 3 OR A TABBY IS 1 & 3, TREADLE 4, OR B TABBY TREADLE, RAISES 2 & 4. TREADLE 5 WILL RAISE HARNESSSES 1 & 2, AND TREADLE 4 HARNESSSES 2 & 3.

WEFT MATERIALS FOR A RUG MAY BE RAGS, COTTON RUG FILLER, HEAVY COTTON CHENILLE, OR HOME-CRAFT SOFT SPUN COTTON. FOR THE LATTER USE THREE STRANDS AS ONE WEFT THREAD. IN THIS WIDTH, WHICH FINISHES ABOUT 28" WIDE, WE FOUND THAT THE HOME-CRAFT COTTON WITH A CARPET WARP TABBY WEAVE BETWEEN PATTERN SHOTS, WILL MAKE ABOUT 28" OF WOVEN LENGTH. SO SIX BALLS WILL MAKE ABOUT A 54" RUG. IF YOU DESIRE TO USE RUG FILLER OR HOME-CRAFT COTTON, OR CARPET WARP, WRITE TO SEARS ROEBUCK CO. IN CHICAGO, ILL. THEY WILL HAVE IT AVAILABLE VERY SOON, AND POSSIBLY YOU CAN GET IT NOW. THEY ALSO DO HAVE CANDLEWICK COTTON, AND THE LIGHTER WEIGHT ENTERPRISE COTTON WHICH IS NICE FOR BAGS OR DRAPERY MATERIALS.

TREADLING THE PATTERN GIVEN ON PAGE 1. THE PLAIN WEAVE IS UNDERSTOOD BETWEEN EACH PATTERN SHOT AS GIVEN IN THE TREADLING ORDERS BELOW, BUT IS NOT INCLUDED IN THESE DIRECTIONS. BE SURE AND PUT IT IN, ONE SHOT, ALTERNATING A, 1 & 3; AND B, 2 & 4.

FOR THE BORDER, - TREADLE 3 - 4x; 2-2x; 1-2x; 4-3x; 1-1; 4-3x; 1-1; 4-3x; 1-1; 4-3x; 1-1; 2-2x; 1-1; 4-3x; 1-1; 2-3x; 1-3x; 4-2x; 3-4x; 2-3x.

FOR THE CENTER, REPEAT, - *1-4x; 4-1; 3-1; 2-1; 1-1; 4-2x; 1-1; 2-1; 3-1; 4-1; 1-4x; 2-4x; 3-6x; 2-4x*. CONTINUE FROM * TO * AS FAR AS DESIRED FOR THE LENGTH. THEN REPEAT THE BORDER TO FINISH.

1-1; MEANS ONE SHOT OF WEFT USING TREADLE ONE, 1- 4x MEANS TREADLE ONE USED 4 TIMES WITH THE ALTERNATE PLAIN WEAVE A THEN B TREADLE, AFTER EACH SHOT OF WEFT, AS FOR INSTANCE TREADLE 1, A TABBY, TREADLE 1, B TABBY, TREADLE 1, A TABBY, TREADLE 1, B TABBY, AND SO ON AS THE DIRECTIONS ARE GIVEN ABOVE.

THE NUMBER OF TIMES EACH TREADLE IS USED WILL VARY ACCORDING TO THE SIZE OF THE WEFT THREAD BEING USED. A FINE WEFT THREAD NEEDS TO BE WOVEN MORE TIMES THAN A COARSE WEFT, AND SOME PEOPLE BEAT HARDER THAN OTHERS WHICH ALSO MAKES FOR SOME DIFFERENCE. WEAVE TO GET THE EFFECT OF THE PHOTOGRAPH IN THIS CASE.

THIS IS A VERY VERSATILE PATTERN, IT CAN BE WOVEN IN MANY DIFFERENT WAYS. THIS IS EXCELLENT FOR TOWEL BORDERS AND LUNCHEON SETS USING A FINE WARP, SET EITHER AT 24, OR WITH A FIFTEEN DENT REED AT 30 THREADS TO THE INCH.

BORDER No. 1 - WEFT IN THIS CASE WAS No. 20 WHITE LINEN FOR PLAIN WEAVE OR TABBY. AND A MEDIUM HEAVY LINEN FLOSS FOR THE PATTERN WEFT BORDERS. WEAVE A PLAIN WEAVE HEADING WITH WHITE. THEN TREADLE 4-2x BROWN, 8 SHOTS PLAIN WEAVE, TREADLE 2-2x BR, 8 SHOTS PLAIN WEAVE, TREADLE 4-2x BR, 8 SHOTS PLAIN WEAVE. TREADLE 3-6x, 4-4x, 1-4x, 2-1, 3-1, 4-1, 1-1, 2-4x; CENTER, REVERSE BACK TO BEGINNING FOR COMPLETE BORDER.

BORDER No. 2 - TREADLE 3-1, 2-1, 1-5; 4-5x; 3-10x CENTER, REVERSE BACK IN SAME ORDER TO THE BEGINNING.

TRY OUT SOME OF THESE VARIATIONS, WE ARE SURE YOU WILL FIND MANY OTHER WAYS OF WEAVING THIS PATTERN WHICH YOU WILL LIKE.