

NOVELTIES FROM ABROAD.

Worsted Suiting.

(Color Effect with Stripe Effects Predominating.)

Warp: 4712 ends, 2/60's worsted.

Weave: See Diagram Fig. 1; repeat 63 warp threads and 4 picks; 10-harness fancy draw.

Reed: 15, threaded thus: 1 dent 1 end, 1 dent 6 ends, 11 dents 5 ends, using 13 dents for one repeat of pattern (62 ends); 66 inches wide in loom.

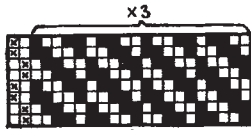


Fig. 1

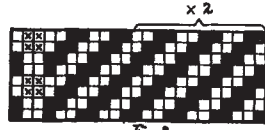


Fig. 2

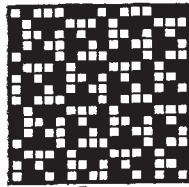


Fig. 3



Fig. 4

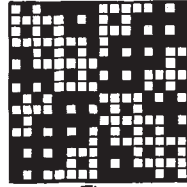


Fig. 5

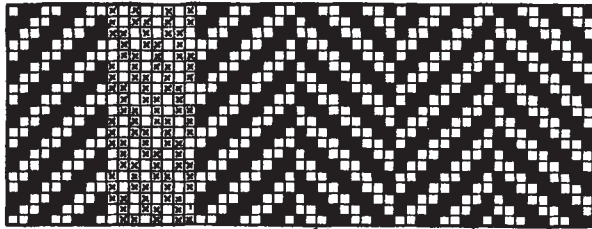


Fig. 6

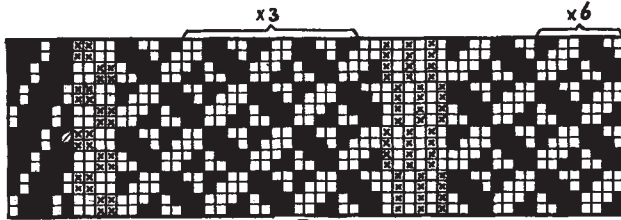


Fig. 7

Dress: 3 ends brown
 1 end white
 1 " white and gray mix
 1 " white
 2 ends brown
 5 " white and gray mix
 2 " brown
 1 end white
 1 " white and gray mix
 1 " white
 2 ends brown
 5 " white and gray mix
 1 end white

} 4 times

62 ends in repeat of pattern.

Filling: 72 picks per inch, 2/60's worsted, arranged thus:

1 pick brown
 1 " white
 1 " white and gray mix
 2 picks brown

5 picks in repeat of pattern.

Finish: Worsted finish, 57 inches wide.

Woolen Cheviot Suiting.

Warp: 1836 ends.

Weave: See Diagram Fig. 2; repeat 35 warp threads and 4 picks; 8-harness fancy draw.

Reed: 13½, with 2 ends per dent, 68 inches wide in loom.

Dress: 2 ends 2/24's worsted, yellow and brown twist.

1 end 3½ run dark brown mix
 1 " " " white
 1 " " " dark brown mix
 1 " " " fawn and white mix
 1 " " " dark brown mix

} 8 times

35 ends in repeat of pattern.

Filling: 28 picks per inch, arranged thus:

1 pick dark brown mix
 1 " light olive green and white mix

2 picks in repeat of pattern

Finish: Scour well, clip on shear, press, decatize, press and steam.

Worsted Suiting. (Mix)

Warp: 3828 ends, 2/40's worsted.

Weave: See Diagram Fig. 3; repeat 8 warp threads and 8 picks; 8-harness straight draw.

Reed: 14½ by 4 ends per dent, 66 inches wide in loom

Dress: 2 ends green and orange
 2 " grayish green mix

4 ends, repeat of pattern.

Filling: 52 picks per inch, the same counts, colors and arrangement as for warp.

Finish: Worsted finish, 57 inches wide.

Light Weight Woolen Cloaking.

Warp: 1428 ends, all 2½ run woolen cheviot yarn.

Weave: See Diagram Fig. 4; repeat 4 warp threads and 4 picks; 8-harness straight draw.

Reed: 10½, with 2 ends per dent, 68 inches wide in loom.

Dress: 1 end white
 2 ends black

3 ends in repeat of pattern.

Filling: 22 picks per inch, arranged thus:

1 " white
 1 " black

2 picks in repeat of pattern.

Finish: Scour well, clip on shear, press, decatize, press and steam.

Worsted Suiting. (Reversible Effect)

Warp: 7788 ends, 2/60's worsted.

Weave: See Diagram Fig. 5; repeat 16 warp threads and 16 picks; 16-harness straight draw.

Reed: 14¾ by 8 ends per dent, 66 inches wide in loom.

Dress: 2 ends black
 2 " dark blue
 2 " dark green
 2 " black

8 ends in repeat of pattern.

Filling: 96 picks per inch, all 2/60's worsted, arranged thus:

2 picks black
1 pick brown
2 picks green
1 pick brown
2 picks black

8 picks in repeat of pattern

Finish: Worsted finish, 57 inches wide.

Worsted Suiting. (Double Stripe Effect.)

Warp: 7920 ends

Weave: See diagram Fig. 5; repeat 4 warp threads and 4 picks; 16-harness straight draw.

Reed: 15, with 8 ends per dent.

Dress: 2 ends 2/64's worsted, black
2 " " " violet
2 " " " dark green
4 " 100/2's spun silk, dark pearl
2 " 2/64's worsted, violet
2 " " dark green
2 " " black
2 ends 2/64's worsted, black
2 " " " violet
2 " " " dark gray
2 " " " black
8 ends 2/64's worsted, black
2 ends 2/64's worsted, black
2 " " " violet
2 " " " dark gray
2 " " " black

} 6 times
} 6 times

120 ends in repeat of pattern.

Filling: 98 picks per inch, arranged thus:

4 picks 2/64's worsted, black
1 pick " " brown
2 picks " " green
1 pick " " brown

8 picks in repeat of pattern.

Finish: Worsted finish, 57 inches wide.

Worsted Trousering.

(Herring-bone effect with Spun Silk Stripe.)

Warp: 3816 ends.

Weave: See Diagram Fig. 6; repeat 53 warp threads and 20 picks; 13-harness fancy draw, using 8-harness for the twill and 5-harness for the corkscrew effect.

Reed: 13, threaded thus: 1 dent 4 ends, 1 dent 5 ends, 1 dent 8 ends (corkscrew) 9 dents with 4 ends each; using 12 ends for one repeat of pattern (53 ends); 67 inches wide in loom.

Dress: 9 ends 2/36's worsted, dark blue
8 " 200/2's spun silk, dark blue
36 " 2/36's worsted, dark blue

53 ends in repeat of pattern.

Filling: 52 picks per inch, all 2/36's worsted, dark blue.

Finish: Worsted finish, 57 inches wide.

Worsted Suiting.

Warp: 3500 ends.

Weave: See Diagram Fig. 7; repeat 128 warp threads and 8 picks; 14-harness fancy draw.

Reed: 13, threaded thus: 1 dent 6 ends (steep twill), 1 dent 4 ends (basket), 14 dents 4 ends (granite), 1 dent 6 ends (rib), 14 dents 4 ends (granite); 66 inches wide in loom.

Dress: 6 ends 2/64's worsted, black
4 ends 2/64's worsted, black twisted over with 2-thread 11/13 denier organzine, green.

1 end 2/64's worsted, bluish-green
and brown
2 ends 2/64's worsted, black
1 end " " bluish-green } × 14
and brown
1 end 2/64's worsted, black
1 " " " heliotrope } × 3
and yellowish-green
1 end 2/64's worsted, bluish-green
and brown
2 ends 2/64's worsted, black
1 end " " bluish-green } × 14
and brown

128 ends in pattern.

Filling: 48 picks per inch, arranged thus:

1 pick 2/22's worsted, black
2 picks 2/36's worsted, bluish-green
1 pick 2/22's worsted, black

4 picks in repeat of pattern.

Finish: Worsted finish, 57 inches wide.

JAPANESE SILK CULTURE.

An interesting story of Japan's progress in the ancient industry of silk culture is told in the *Japan Magazine* by Sakio Tsurumi, Director of the Government Commercial Museum. He says that last year Japan was called upon to produce more than 35 per cent of the total output of all nations, of which output more than 26 per cent found sale abroad. It goes without saying, therefore, that sericulture forms the most important industry of the Empire, and next to rice is the country's leading commercial product.

The rearing of silkworms in Japan seems to be as old as the nation itself, for history records no definite period as its beginning. Long before the Christian era, even back in the age of the gods, it is said that silk wearing and therefore silk weaving went on. The mythological period is enlivened with tales of busy-fingered maidens producing fabrics and adorning themselves in exquisite creations of silk. It was regarded as the only fabric fit for the sacred person of the Emperor, and the only one in the production of which Imperial hands had ever taken part; for the august rulers of Japan have always taken an active interest in the production of silk, even to feeding the silkworms with their own hands.

The young worms are the most tender and delicate creatures imaginable, and mechanical appliances and devices are of little avail; only the human touch can succeed. It is nursery work in the most literal sense, and only long hereditary experience and instinctive consciousness of danger, which the Japanese have acquired through ages of monotonously going over the same work, can have given them the skill they display in handling and nurturing these frail producers of silk fibre.