

4 up, 1 down (Fig. 9) and its mate.
 3 up, 2 down (Fig. 10) and its mate.
 2 up, 1 down, 1 up, 1 down (Fig. 11) and its mate.

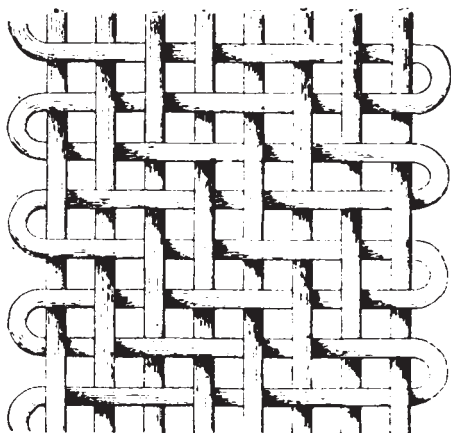
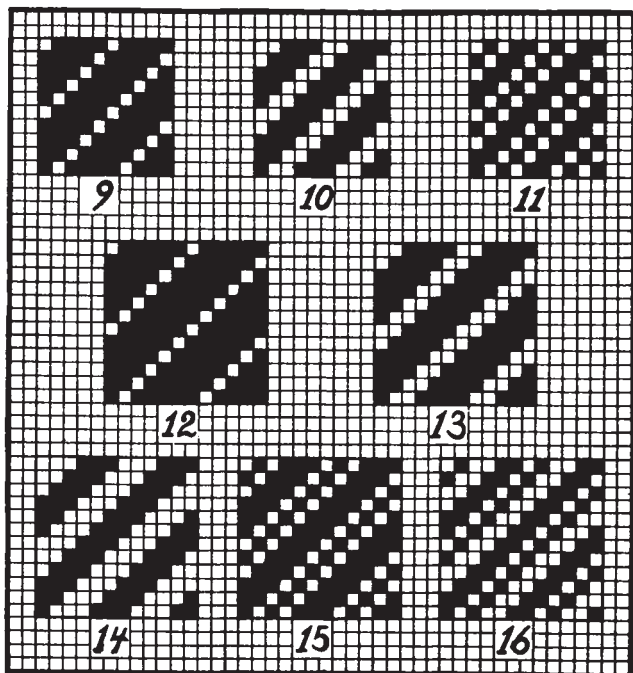


Fig. 8

The three interlacings illustrated by its weaves are what we term warp effects, its mate effects are the corresponding filling effects, risers for sinkers and vice versa.

On 6-harness, five different twills are possible to be made and of which three are uneven sided and two even sided twills, viz:

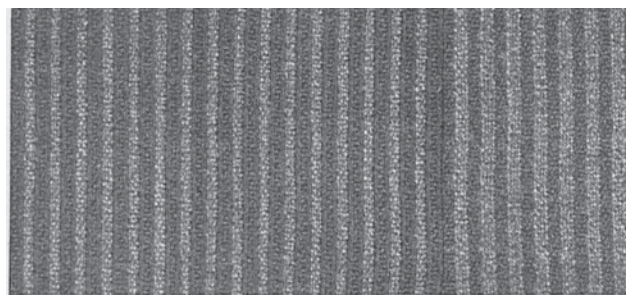


5 up, 1 down (Fig. 12) and its mate.
 4 up, 2 down (Fig. 13) and its mate.
 3 up, 1 down, 1 up, 1 down (Fig. 15) and its mate.
 3 up, 3 down (Fig. 14) even sided.
 2 up, 2 down, 1 up, 1 down (Fig. 16) even sided.

Following instructions given, it will be an easy matter to construct any twills possibly to be made on any given number of harnesses. The larger the repeat at our disposal the more the number of twills possible to be made for such a repeat.

(To be continued.)

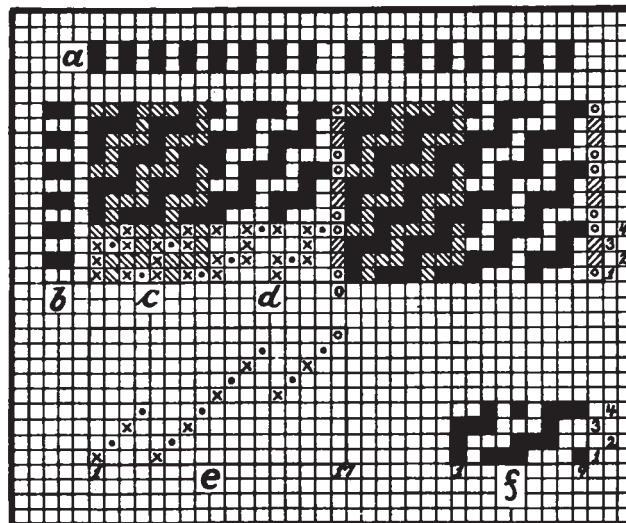
Worsted Trousering.
 (Reversible Stripe Effect.)



Face | Back
 ACTUAL REPRODUCTION OF FABRIC

Warp: 7140 ends; draw on 17-harness straight or on 9-harness, fancy draw.

Dress: 14 sections, each containing 30 patterns @ 17 ends, or 510 ends total.



DETAILS OF FABRIC STRUCTURE:

- a: Weave for Face and Back structure, the plain weave.
- a: Color Scheme for Warp.
- b: Color Scheme for Filling.
- c and d: Construction of the two effects, dark and light.
- e: Single cloth weaving warp-thread. Repeat of weave 17 warp-threads and 4 picks.
- e: Drawing-in Draft for 9-harness, fancy draw.
- f: Harness-chain for draft e.

Arrangement of Warp:

- 1 end 3 fold, hard twisted 2/50's worsted, black.
- 1 end 2/50's worsted, lt. and dk. gray tw. } × 2
- 1 end 2/50's worsted, black.
- 1 end 2/50's worsted, lt. and dk. gray twist.
- 1 end 3 fold, hard twisted 2/50's worsted, black.
- 1 end 2/50's worsted, lt. and dk. gray tw. } × 4
- 1 end 2/50's worsted, black.
- 2 ends 2/50's worsted, lt. and dk. gray twist.

17 ends, repeat of pattern.

Reed: 12½, using one dent with 8 ends to alternate with one dent with 9 ends; 66.1 inches, width of warp in reed, exclusive of selvage.

Filling: 82 picks per inch, arranged thus:

- 1 pick 2/48's worsted, black.
- 1 pick 2/48's worsted, lt. and dk. gray twist.

2 picks in repeat.

Finish: Worsted finish, clear face, 56 inches wide.