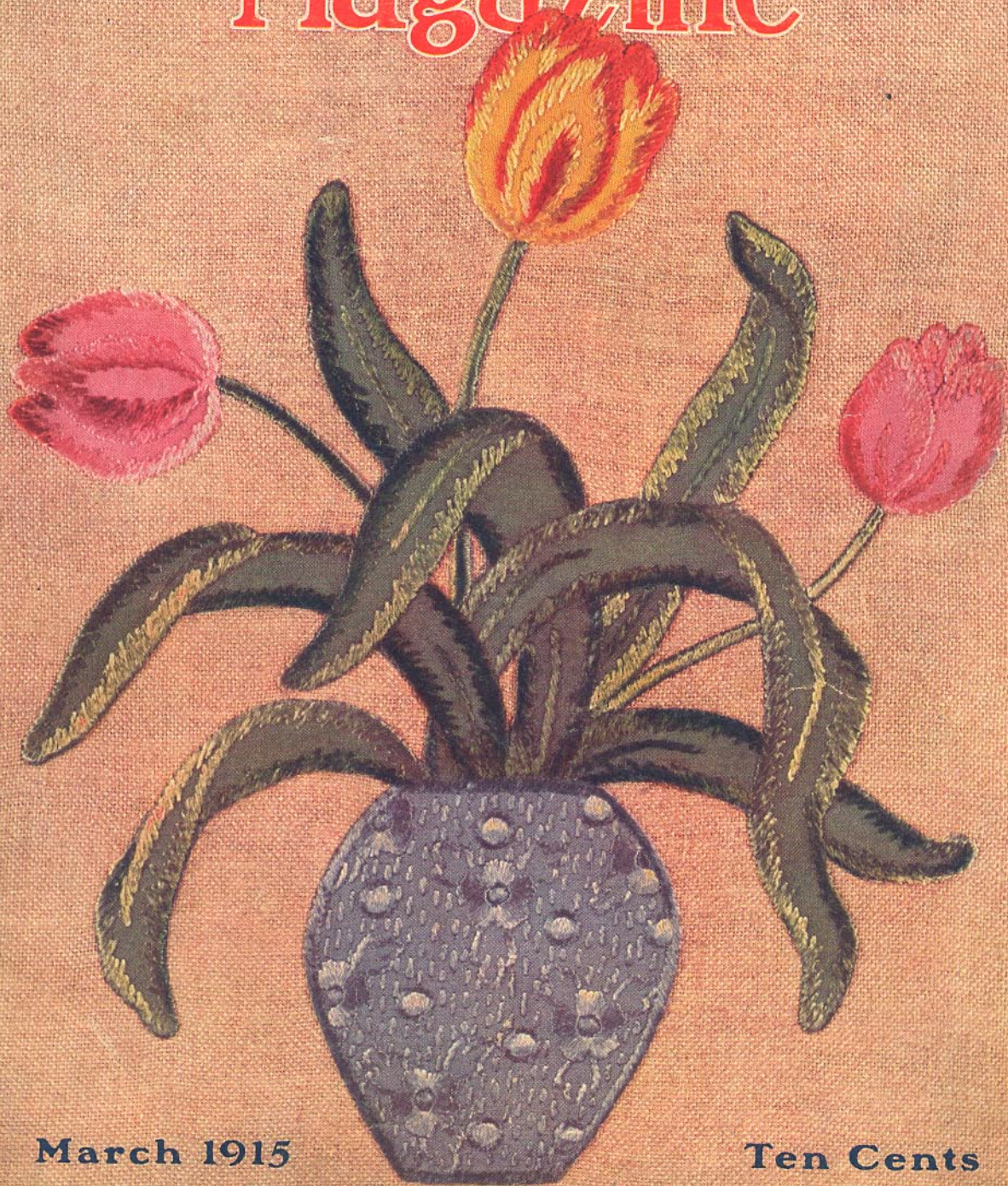


Home Needlework Magazine



March 1915

Ten Cents

Fancy Work Supplies for Home Needleworkers

In case you cannot buy what you want in the way of
Fancy Work Supplies from our Advertisers—order from us.

IVORY RINGS, white and black
No. 8, $\frac{1}{2}$ -inch, 10c. per dozen. No. 10, $\frac{5}{8}$ -inch,
10c. per dozen. No. 12, $\frac{3}{4}$ -inch, 12c. per dozen.
No. 14, $\frac{7}{8}$ -inch, 12c. per dozen. No. 16, 1-inch,
12c. per dozen.

STILETTOS

A well made, nicely finished Stiletto with ebonized handle and adjustable gauge, 25c.
Bone Stiletto, size 3 inches, 10c.

CROCHET HOOKS

Amber Crochet Hooks. Length, 8 inches. No. 4, 15c.; No. 5, 20c.; No. 6, 25c.; No. 7, 30c. each.
Bone Crochet Hooks, 10c. each.
Wood Crochet Hooks, 10c. each.
Eagle (steel) Crochet Hooks, sizes: 3, 6, 8, 10, 12, 13, 14, 5c. each.
Irish Crochet Hooks (steel), sizes: 10, 12, 13, 14, 10c. each.

TATTING SHUTTLES

Bone Tatting Shuttle, 10c. each; with hook attachment, 35c.
Rubber Tatting Shuttles, 15c. each.

KNITTING NEEDLES

Amber Knitting Needles. Length, 14 inches. No. 4, 30c.; No. 5, 40c.; No. 6, 60c.; No. 7, 80c., per set of 2.
Steel Knitting Needles, sizes: 10, 12, 14, and 15, 3c. each; 2 for 5c.
Bone Knitting Needles, sizes: 3 and 4, 35c. per set of 2.

NETTING NEEDLES

Steel Netting Needles, sizes: 16, 17, 18, 19, 20, and 21, 10c. each.
Bone Netting Meshes, sizes: $\frac{1}{8}$, $\frac{1}{4}$, $\frac{3}{8}$, and $\frac{1}{2}$ inch, 30c. per set of 4.

NEEDLES

Queen Crewel Needles for embroidery, sizes: 4, 6, 7, 8, 9, 10, and 12, 10c. per paper.
Embroidery Needles, sizes 5 to 10 in paper, 10c. per paper.
Tapestry Needles (blunts), for cross-stitch and Hardanger work, sizes: 23, 24, 25, 10c. per paper.
Carpet Needles (round points), size 24, 10c. per paper.
Chenille Needles for embroidery (fine points), size 21, 10c. per paper.
Punched Work Needles, two sizes: coarse for centrepieces and heavy work; fine for neckwear, babies' bonnets, etc., 5c. each.
Needle Threader, 15c.

EMBROIDERY HOOPS

Oval Embroidery Hoops, especially desirable for drawn-work and for embroidering long narrow designs. In two sizes: size 3 x 6 inches, 15c.; size 6 x 12 inches, 20c.
Duchess Embroidery Hoops, with felt cushion on band around the inner hoop, which renders slipping impossible, sizes: 4, 5, 6, and 7 inch, 15c. each; 10-inch size, 20c.
Special Wooden Embroidery Hoop, sizes: 4, 6, 7, and 8 inch, 10c. each.
De Luxe Hoop, inner rim of wood, outer rim of shell, with adjustable gauge, sizes: 4, 5, and 6 inches, 35c. each.

STAPLES

Staples for Hairpin Crochet, four sizes: $\frac{3}{4}$ -inch, 20c.; 1-inch, 25c.; 1 $\frac{1}{2}$ -inch, 30c.; 2 $\frac{1}{4}$ -inch, 40c. each. Set of four staples (one of each size), with directions for making the lace, \$1.00.

BOBBINS

Wooden Bobbins, two sizes. The larger bobbin is for torchon and Cluny made of D. M. C. (lace thread) No. 35 and coarser. The straight-handle bobbin for Russian and for all fine laces. 10c. each; 3 for 25c. Paper cutting pattern for pillow for bobbin lace, 10c.

SCISSORS

Eight-inch Shears, good quality, 75c. a pair.
Six-inch Sewing Scissors, excellent quality, 50c. a pair; four-inch size, 50c. a pair.
"Stork" Embroidery Scissors, 3 $\frac{1}{2}$ -inch, 4-inch, and 4 $\frac{1}{2}$ -inch, 50c. a pair.
Embroidery Scissors, with handles of German silver, blades of finely tempered steel, 50c. a pair.

COTTONS

Stranded Cotton, white and 51 colors. Stranded cotton is a mercerized cotton composed of 6 strands which can be separated and used in the same way as Filo Silk, for shading flowers, and is especially suitable for solid and eyelet embroidery. One size only, No. 25, 3c. per skein; 35c. per dozen skeins.
Pearl Cotton, 51 colors, fast shades, size No. 5. Especially adapted for Wallachian and cross-stitch embroidery, also for working centrepieces, table-covers, scarfs, pillows, and all articles used for household decoration. 6c. per skein; 70c. per dozen skeins.
Pearl Cotton, white, sizes: Nos. 5, 8, and 12. No. 5 (the coarsest) is used for heavy embroidery; No. 8 is used for Hardanger; No. 12 is used for flannel embroidery and weaving. 6c. per skein; 60c. per dozen skeins.
Crochet Cotton, mercerized, white only, sizes: Nos. 1, 2, 3, 5, and 10, for padding and table mats, 18c. per ball; Nos. 20, 30, 40, and 50, for general use, 23c. per ball; Nos. 70, 80, and 100, for Irish crochet, 28c. per ball; No. 150, 33c. per ball.
Embroidery Cotton, white only, not mercerized, sizes: 4, 6, 8, 10, 11. Order by number. No. 4 is the coarsest. 3c. per skein; 30c. per dozen skeins.

EMBROIDERY FLOSS

Embroidery Floss, white only, large skeins, sizes: Nos. 6, 10, 14 (No. 6 is the coarsest), 7c. per skein; 70c. per dozen skeins.
Persiana Embroidery Floss, used for fine embroidery on shirt-waists, neckwear, etc., one size only, in white, 10c. per ball.
Mercerized Embroidery Floss, white only, sizes: C, D, E, and F. Size C (the coarsest) is used for Hardanger and Wallachian embroidery, table-covers, pillows, and centrepieces. Sizes D and E are especially adapted for shirt-waists, dress accessories, and underwear. Size F (the finest) is for very fine embroidery. 5c. per skein; 50c. per dozen skeins.

Home Needlework Magazine, Southgate Bldg., Boston, Mass.

Home Needlework Magazine

PUBLISHED MONTHLY

The entire contents of this magazine is protected by copyright,
and articles or illustrations must not be reprinted
without special permission.

Contents for March, 1915

	PAGE
Curtain with Crocheted Border	<i>Emma Boothby</i> Frontispiece
Appliqué Embroidery	<i>Alice Waddington</i> 1
Three Guest Towels 5
Dainty Summer Hats to be Made at Home	<i>Carrie D. Benthall</i> 6
Handsome Colored Embroideries 8
Filet Crochet for Wearing Apparel 11
Yoke and Sleeve Bands for Cotton Dress	<i>Mrs. J. G. Graf</i> 11
Two Filet Crochet Stocks	<i>Ada L. Ayers</i> 12
White Linen Skirt with Insets of Filet Crochet	<i>Julia A. Greene</i> 13
Towels with Crochet Insertion 14
Towel with Embroidered Filet	<i>Helen Randolph</i> 14
Towel with Filet Insertion	<i>Hattie M. Loring</i> 15
Embroideries for the Summer Wardrobe 16
Two Piqué Hats for Children 18
Infants' Belted Jacket	<i>Mary Goddard</i> 19
Seersucker Lingerie 20
A Waist and Three Collars 22
A Smart Flare Collar	<i>Emma L. Boardman</i> 23
Chemisette Embroidered in Color	<i>Mrs. M. L. Williams</i> 23
Pretty Tatted Neckwear 24
Tatted Collar	<i>Corinne E. Tice</i> 24
Tatted Jabot	<i>Lena M. Brooks</i> 25
Crocheted Bead Trimmings	<i>Belle Robinson</i> 26
Dining-Room Embroideries 28
Clematis Design for Salad Set	<i>Gertrude S. Twichell</i> 30
A Pretty Work Bag 33
Combined Sewing Bag and Stand	<i>A. E. Swoyer</i> 34
Marking Family Towels	<i>Laura W. Lake</i> 36
A Convenient Laundry Bag 38
A Novel Bassinet	<i>Mrs. Sidney Erickson</i> 40
A Japanese Garden	<i>Harriet C. Shaw</i> 41

Home Needlework, published monthly, is distinctly a woman's magazine, devoted principally to embroidery, lacemaking, and fancy needlework in all its forms. It is an authority on dress garniture and home decoration.

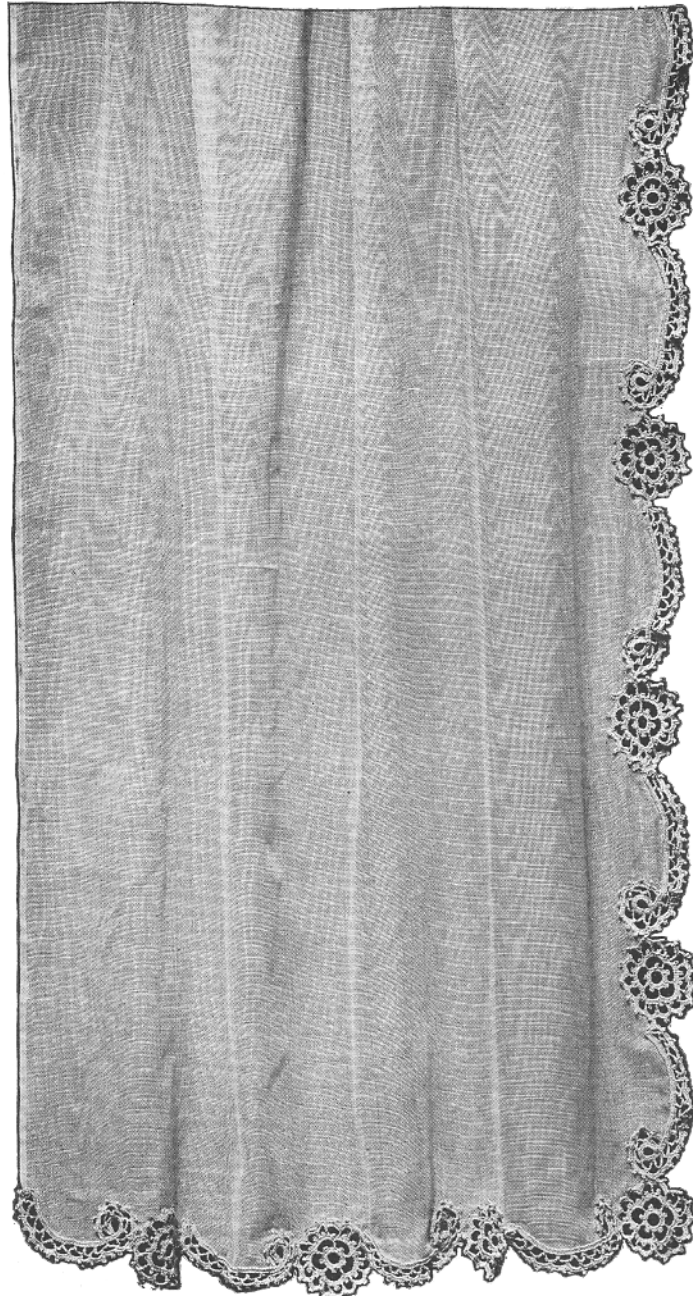
Price. The subscription price of HOME NEEDLEWORK in the United States and its possessions is 75 cents a year; two years, \$1.00. Single copies, 10 cents, on all news-stands. Canadian postage, 25 cents a year extra. Foreign postage, 50 cents a year extra. Foreign stamps not accepted.

How to Remit. The easiest and safest way to remit for subscriptions is by Post Office Money Order or Express Money Order, payable to Home Needlework Publishing Company. Currency should not be sent through the mails. Stamps will be accepted in limited amounts.

Advertising Rates furnished on application.

HOME NEEDLEWORK PUBLISHING COMPANY, Boston, Mass.

Copyright, 1914, by Home Needlework Publishing Company, 87 Broad Street, Boston, Mass. Entered as Second Class matter at the Post Office at Boston, Mass., under the Act of March 3, 1879. Trade Mark Registered U. S. Patent Office.



CURTAIN WITH CROCHETED BORDER

By Emma Boothby

DESIGN No. 153-1. Cream-colored scrim, 5 yards, 40 inches wide, \$2.50. Crochet cotton, 10 balls, and a steel crochet-hook, \$1.80 extra. (For directions, see page 46.)

HOME NEEDLEWORK MAGAZINE

VOL. XVII

No. 2

MARCH, 1915

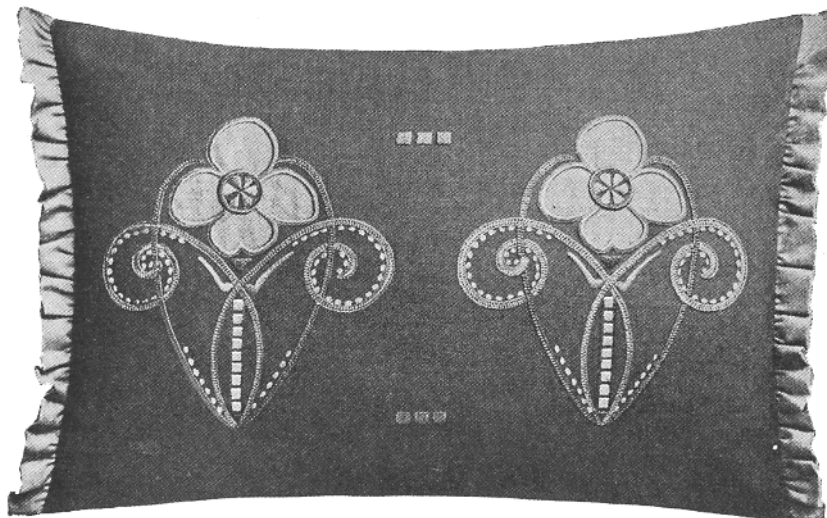
Appliqué Embroidery

By Alice Waddington

THE four pieces of appliqué illustrated here are all simple, effective, and easy of execution.

The one with the three upstanding flowers, No. 153-3, can very well be rec-

smooth it should be pressed with an iron, then the ground material should be placed flat on a table and the appliqué very accurately placed in position and held with pins. It should then be



PILLOW OF ECRU LINEN WITH APPLIQUÉ OF GREEN

DESIGN No. 153-2. *Size, 15 x 20 inches.* Design stamped on brown linen and green linen for appliqué with green linen, not stamped, for frill, 90 cents, or given for two subscriptions, of which your own may be one, and 20 cents. Embroidery cotton, 42 cents extra, or silk, 90 cents extra. Perforated pattern, 35 cents; transfer pattern, 10 cents.

A color scheme will be sent with each pattern.
Work commenced, \$1.00 additional.

ommended to a beginner as a first piece, though she need have no hesitation in attempting any of them.

The design is stamped on both the ground material and on the pieces to be applied, if any of it is not quite

fastened down with a preliminary tacking of tiny running-stitches and this should be kept carefully between the double lines in order not to interfere with the after stitching of silk. This sewing in position is best done while still keep-

ing the work flat on the table, and particular care is needed to get the junction between a stem and flower or leaf quite right.

When all the appliqué is tacked, a close even buttonhole-stitch (see Fig. 1) is worked from one line to the other of the double outline, with the heading outwards, and afterwards the extra linen is cut away.

Use a short strong-pointed pair of scissors such as nail scissors, for the cutting, and watch the side that is to be left, *i. e.*, the stitching, not the part you are cutting away.

The runner with the three flowers is of creamy white linen. The green linen, which finishes off the end of it, is run on to the white linen, and turned over on to the face where it forms the leaves of the flowers as well.

The three flowers of deep rose linen are next put into position, care being taken that the stem on the white linen meets the leaf and the flower exactly in the centre of each. Keep the buttonhole-stitching always at right angles to the outline, if this is done it will be found that it

will join on naturally to the stem, which should be worked in satin-stitch straight across from side to side. (Fig. 1.) The leaf and stem are worked with the same green silk, the flower with a lighter shade of rose. The square

satin-stitch spot between the repeats and the line of broken chain spotting or daisy stitch which is carried across in a

straight line, are worked in a double silk in rose, the color of the linen of the flower.

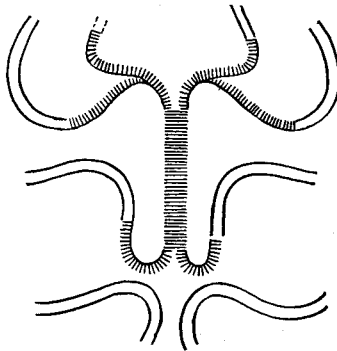


FIG. 1. SHOWING THE BUTTONHOLING OF THE APPLIQUÉ

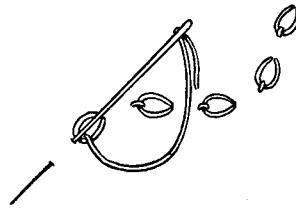


FIG. 2. DETAIL OF THE CHAIN LOOP STITCH

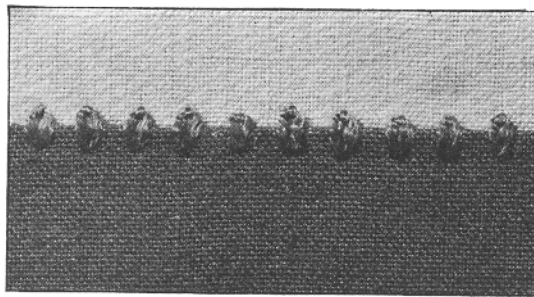


FIG. 3. SHOWING HOW THE CHAIN LOOP STITCH IS MADE ON BOTH MATERIALS

The other runner, No. 153-4, has a design suggested by a peacock's feather. The ground linen is of tan linen, the three-inch deep hem and the main portion of appliqué of each device is a dark green, and on the lower portion of each of the ovals is a second piece of appliqué of blue linen.

Both should be tacked in position, and the blue linen should first be buttonholed round with a little darker shade of brown, and the surplus linen from this cut away, before the larger green piece is stitched round with silk of its own shade.

The buttonholing on a small portion of the outline at the bottom must be left, where a dark shape is worked in black satin-stitch on the brown linen and over the cut edge on to the ground linen.

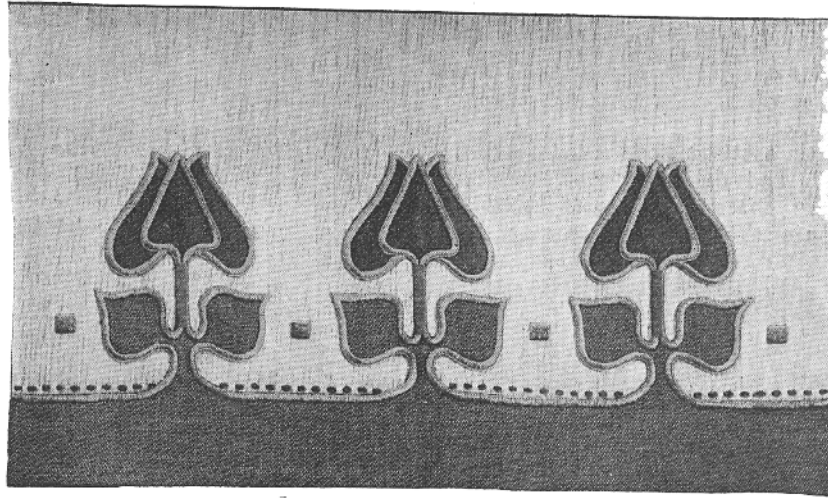
The chain spotting round the ovals is of a strong blue to match the linen, this and the feather-like scrolls lighten and help the solid masses.

The scrolls are in two shades of green, the light shade on the upper scrolls and the darker on the lower scrolls, and together the effect is suggestive of peacock coloring.

The stem is a tan-color. The little row of peacock eyes, threaded on a blue line, are each stitched

in green with a few over-stitches of blue and an eye of yellow, spotted with black.

The green hem is slip-stitched down on



SCARF OF ECRU LINEN WITH GREEN AND ROSE-COLORED APPLIQUÉ

DESIGN No. 153-3. *Size, 18 x 60 inches.* Design stamped on cream linen and on green and rose linen for appliqué, \$1.40. Embroidery cotton, 30 cents extra, or silk, 60 cents extra. Perforated pattern, 30 cents; no transfer pattern.

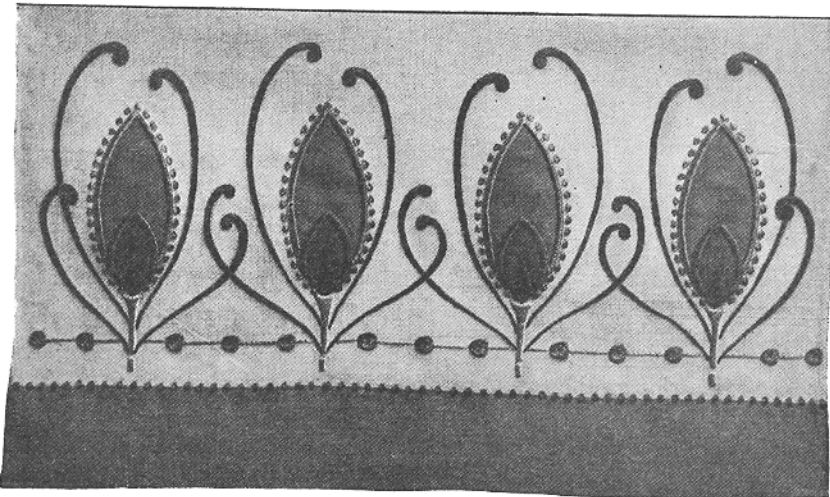
A color scheme will be sent with each pattern of the two designs shown on this page.

its upper edge and a row of daisy or chain-stitches is worked in green, making each stitch upright and half in the green hem and half on the tan linen.

The square, No. 153-5, is here used as a twenty-nine-inch cover, of an écreu Bulgarian linen, and the tree shapes are appliqué of two colors, the leaves in a dark green, and the stems in a dark brown.

The stems must be tacked in position *first* and any surplus material more than is needed to just pass under the leaves should be trimmed away from the stem ends, before the leaves are put in place.

These leaves must first be buttonholed in a strong red color and surplus material cut away, so exposing the whole of the stem which can then be buttonholed in



SCARF OF RAMIE LINEN WITH GREEN AND BLUE APPLIQUÉ

DESIGN No. 153-4. *Size, 20 x 60 inches.* Design stamped on tan linen and on green and blue linen for appliqué, \$1.50. Embroidery cotton, 48 cents extra, or silk, \$1.00 extra. Perforated pattern, 40 cents; no transfer pattern. *Work commenced, \$1.00 additional.*

Stamping compound, with directions, 10 and 25 cents a box.

dark brown and trimmed off in the same way.

The work is now clear for the additional embroidery which is worked on to the ground material.

The chain spotting close round the leaf is in green and the short stems to the berries are chocolate-brown, worked in double chain-stitch, a stitch which makes

stitch in green. One or two points should be noticed in doing this style of appliqué work.

It is important to get the appliqué all carefully placed in position before any of the work gets crushed, and the preliminary stitching must be small and firm enough, and done with the work kept flat, so that the two fabrics should be

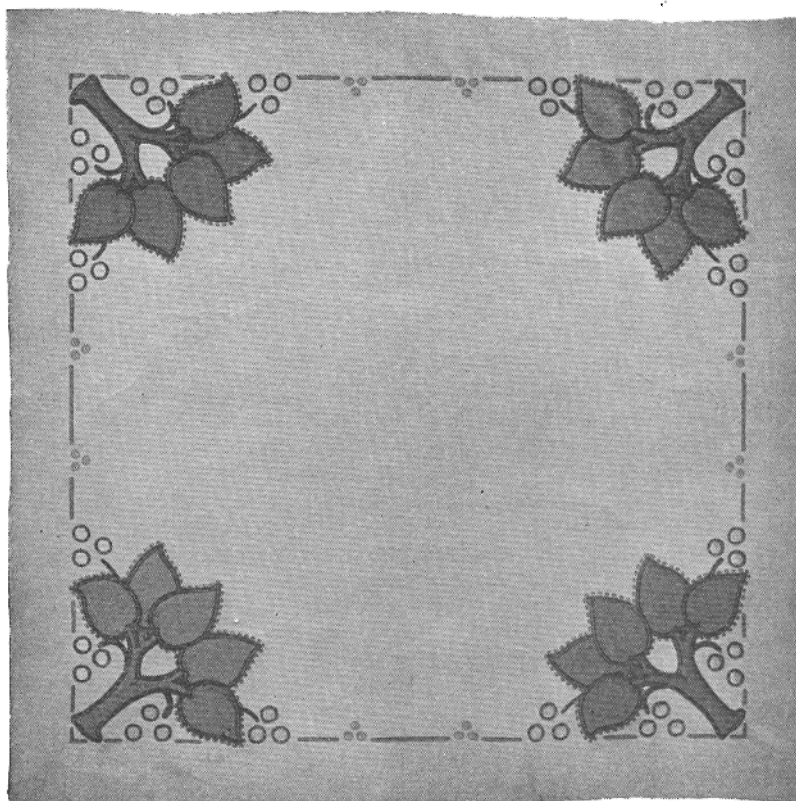


TABLE COVER OF BULGARIAN LINEN WITH GREEN AND BROWN APPLIQUÉ

DESIGN No. 153-5. Size, 29-inch. Design stamped on écru Bulgarian linen and on green and brown linen for appliqué, \$1.45. Embroidery cotton, 30 cents extra, or silk, 70 cents extra. Perforated pattern, ½ design, 35 cents; no transfer pattern. Work commenced, \$1.00 additional.

a filling and a decided outline at the same time.

The bunches of berries on the trees are large satin-stitch rounds in rose-pink, each outlined with chain-stitch in chocolate color.

The smaller spots in the border are also pink, but worked each in a circle of buttonhole.

The line between is a sloping satin-

smooth and close together when finished.

The more even the buttonhole heading is kept, the more easy it is to cut away the surplus linen neatly.

After the first careful cutting it should be gone over again, using the finger nail to raise any frays which, if left, would work out later. The heading of the buttonhole hides the cut edges of the linen. The

[CONCLUDED ON PAGE 42]

Three Guest Towels

THREE most attractive designs for guest towels are shown on this page, two with scalloped ends, and one finished with hemstitching.

The first two patterns are both worked in French knots and lazy-daisy stitch, which are two of the most simple stitches used by embroiderers. Blue is used for the flowers in the first one, and pink in the second. A knot is made on each of the tiny circles, six for the petals and one for the centre.

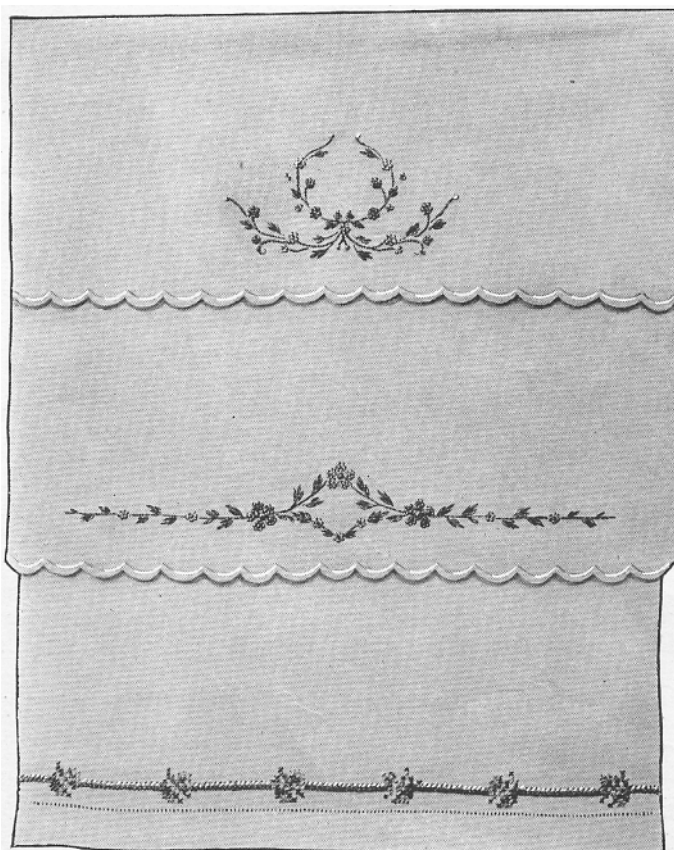
Bring the needle up on a dot and pull the thread through the entire length. With the needle held close to the material, wind the thread around it once, then put it down through the material again, very close to where it was brought up, and draw the thread down tight.

When making the lazy-daisy stitch, bring the thread up at the end of the leaf nearest the stem, drawing it through its entire length. Now, holding the thread with the left thumb to make a loop the length of the leaf, insert the needle very close to where it was brought up, bringing it up again at the tip of the leaf, and taking a short stitch here to hold the loop in place.

Both ends are finished with an even scallop, which should be run on both edges

with fine stitches, and padding stitches between. Through the wide section chain-stitches may be used, using single stitches to work well up into the points.

The third towel is stamped on a hemstitched towel, so all one needs to do is the embroidery, which is a neat cross-stitch design. Use pink, blue, and green.



THREE GUEST TOWELS WITH SIMPLE DESIGNS

DESIGN No. 153-6 (upper illustration). *Size, 16 x 24 inches.* Stamped linen huckaback, 60 cents, or given for one subscription, other than your own, and 25 cents. Embroidery silk, 50 cents extra, or cotton, 24 cents extra. Perforated pattern, 25 cents; transfer pattern, 10 cents.

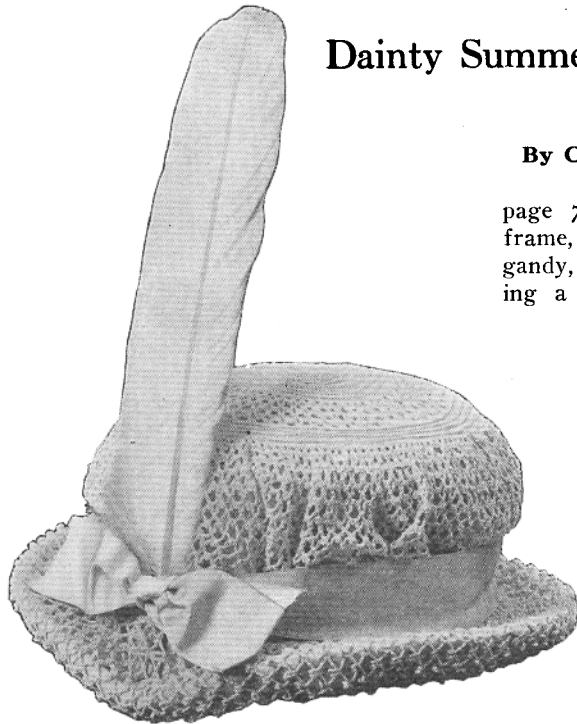
DESIGN No. 153-7. *Size, 16 x 24 inches.* Stamped linen huckaback, 60 cents, or given for one subscription, other than your own, and 25 cents. Embroidery silk, 45 cents extra, or cotton, 21 cents extra. Perforated pattern, 25 cents; transfer pattern, 10 cents.

DESIGN No. 153-8 (lower illustration). *Size, 16 x 24 inches.* Design stamped on a hemstitched linen towel, 60 cents, or given for one subscription, other than your own, and 25 cents. Embroidery silk, 30 cents extra, or cotton, 18 cents extra. Perforated pattern, 25 cents; no transfer pattern.

A color scheme will be sent with each pattern of the three designs shown above.

Dainty Summer Hats to be Made at Home

By Carrie D. Benthall



THE CROWN AND BRIM OF THIS HAT ARE CROCHETED FLAT, THEN FITTED TO THE SHAPE WITH DRAW TAPES
DESIGN No. 153-9

AT first glance, one would hardly think that this smart-looking hat was made from perfectly flat pieces of crochet, but such is the case, so you can readily see it is not half as difficult as it looks.

The crown is made perfectly round, then a narrow ribbon or tape is run in the chain loops on the edge, drawn up and tied around the base of the crown. This gives the fulness which is seen on the sides.

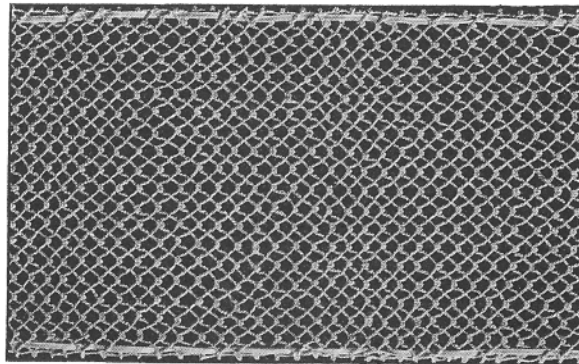
The brim is made of a straight band of crochet (see detail). Run the tape in both edges, draw up both and tie one around the crown, fitting the other to the head size. These hats may be trimmed in various ways, according to one's fancy.

Design No. 153-10 shows another crown which may be adapted to this same use.

The hat shown at the top of

page 7 is made on a wire foundation frame, and is covered with flowered organdy, shirred on to fit the shape, making a charming bit of millinery for a young girl.

CROWN FOR DESIGN No. 153-9.
—Chain 6, catch with sl st, make 12 d in ring. *2d row*—2 d in first d of previous row, 1 d in next d, and repeat around, making 18 d in row. Make 17 more rows of d, increasing by making 2 d in a d of the previous row, so the work will be perfectly flat. Take the stitches each time in the back stitch of the previous row, so that little ridges will appear in the work. Chain 5, miss 1 st, d in next, all around. *Next row*—d in 5 ch, ch 2, d in same 5 ch (forming p), ch 5, and repeat around. *Next row*—d in 5 ch, ch 5, d in next 5 ch; repeat around. Continue with alternate plain and picot chains, until there are 7 rows. *Next row*—5 d in each 5 ch. Continue with 4 more rows, making d in d unless it is necessary to increase to keep it flat. Now continue with alternate plain and picot chain loops for 25 rows, or sufficient length to well



STRAIGHT BAND WITH DRAW TAPES ON EACH EDGE USED TO COVER HAT BRIM

cover the top and sides of the crown.

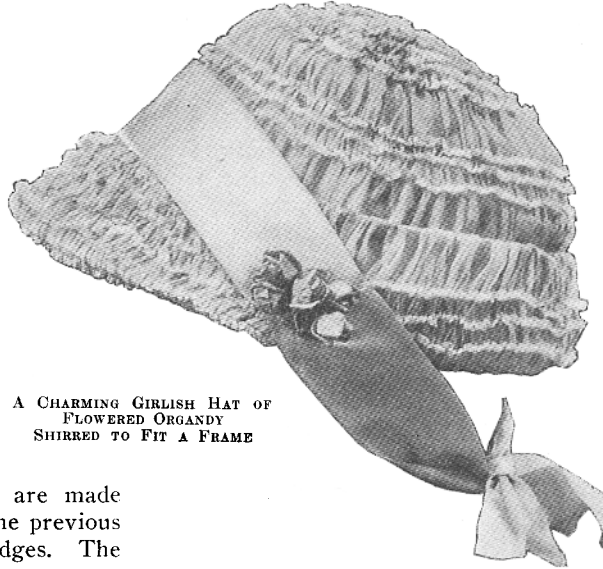
BAND FOR BRIM.—This is made in a straight piece, as shown in the detail. Make a chain long enough to extend over the top and bottom of the brim, then make picot chain loops (using 5 ch for p, and catching the d in the centre st of 5 ch, instead of over the loop) for a sufficient length to extend around the brim.

CROWN No. 153-10.—Chain 6, 14 d in ring. *2d row*—3 d in first d, 1 d in next, all around, this will make seven sides. Continue for 4 rows with d in d, except on the corners where you make 3 d in d. The rest of the solid part is made in the same way, except that the stitches are made in the back of the stitches of the previous row, which will make little ridges. The picot chain edge is made the same as on No. 153-9.

The shape at the top of this page offers numerous suggestions to be carried out along this same line. Summer hats for the girl are so easily made, with such sat-

isfactory results, that she may have several to match her dainty gowns.

Not only organdy is suitable for mak-



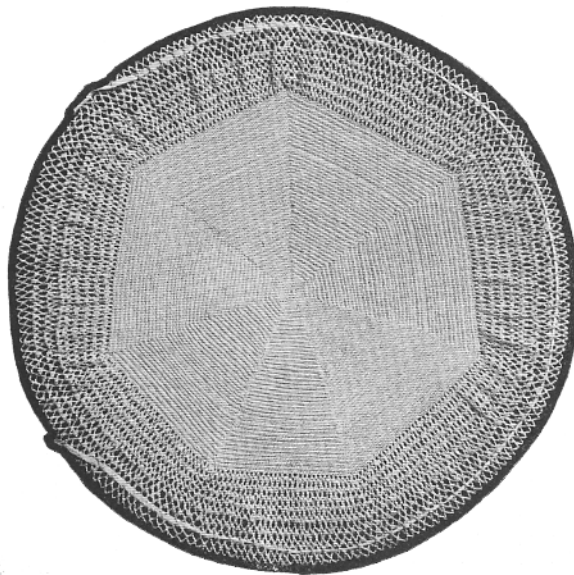
A CHARMING GIRLISH HAT OF FLOWERED ORGANDY SHIRRED TO FIT A FRAME

ing them, but any dainty thin material, or even net. This, as shown in the illustration, can be shirred on to fit any shape, the material extending well up under the brim to the head size.

The matter of trimming can be left entirely to the individual, for nearly every girl can add some pretty touch to give an air of individuality. A jaunty bow, a pretty flower, or the dainty wreaths, which are so popular, all figure extensively in trimming.

If plain muslin were to be used, a simple embroidery design might well be adapted, both on the crown and brim.

Just a word about the dresses with which these hats are to be worn. Needless to say, they should be just as dainty as the hat itself; but this does not necessarily mean a vast amount of trimming, for some of the most attractive summer gowns are made quite plain. White materials are always good as well as dainty figured organdies.



ANOTHER CROWN SHOWING THE GATHERING CORD DESIGN No. 158-10

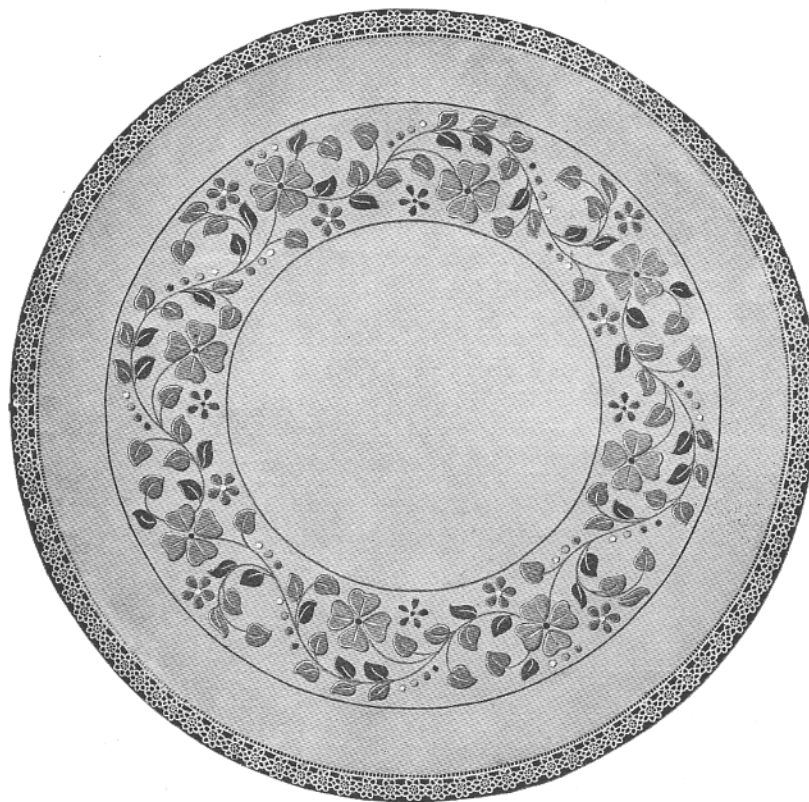
Handsome Colored Embroideries

THE handsome centrepiece shown on this page is made of Bulgarian linen, and measures twenty-six inches without the lace which finishes the edge. Either silk or cotton may be used for embroidering, but for really handsome work, silk is far superior. Two shades of blue, two of green, and two of yellow are used for

the stitches. The centre of the piece is plain, with another plain band around the outside.

The edge may be finished with a lace already made, such as Cluny, or one may very easily make a crocheted edge, as shown in the illustration.

For description of stitches, see page 44.



CENTREPIECE OF BULGARIAN LINEN EMBROIDERED IN BLUE, GREEN, AND YELLOW

DESIGN No. 153-11. *Size, 26-inch.* Stamped écu Bulgarian linen, 70 cents, or given for two subscriptions, of which your own may be one. Embroidery cotton, 53 cents extra, or silk, \$1.50 extra. Perforated pattern, 45 cents; transfer pattern, 15 cents.

A color scheme will be sent with each pattern.

working, the shades being used according to the color scheme, which is sent with each pattern. Every section is worked solid, the stitches on the smaller petals being taken from side to side, while the larger petals and leaves are worked from the centre to the outside, slanting

WHEEL.—Chain 20, join with sl st. *1st row*—Chain 1, 40 d in ring, join to 1st d with sl st. *2d row*—Chain 7, miss 4 d, 1 d in 5th d, (ch 6, miss 4 d, 1 d in 5th d) around, join last 6 ch to 1st st of 7 ch with sl st. *3d row*—Make 9 d under each chain-loop around, join to 1st d. Break



JAPANESE DESIGN IN BLUE AND GREEN

DESIGN No. 153-12. *Size, 15 x 22 inches.* Stamped écre Bulgarian linen, with same material for back, 85 cents, or given for two subscriptions, of which your own may be one, and 15 cents. Embroidery silk, \$1.10 extra, or cotton, 60 cents extra. Perforated pattern, 35 cents; transfer pattern, 15 cents. *A color scheme will be sent with each pattern of the two designs shown on this page.*

thread and fasten. Join each wheel as you make it to preceding one, at the 5th d in a loop. Take hook out of work, insert in a 5th d in preceding wheel, catch 5th loop and pull through, then proceed with d, making four more in loop, join next loop in same manner, always leaving two free loops at top and bottom of wheel.

Make a row of wheels long enough to go around the centrepiece without drawing, leaving an end of thread at beginning of each wheel long enough to make the needlework stitches in the centre. For the heading fasten the thread with 1 d in 5th st of 2d loop to the right on first wheel, ch 5, 1 d in 5th st on next loop.

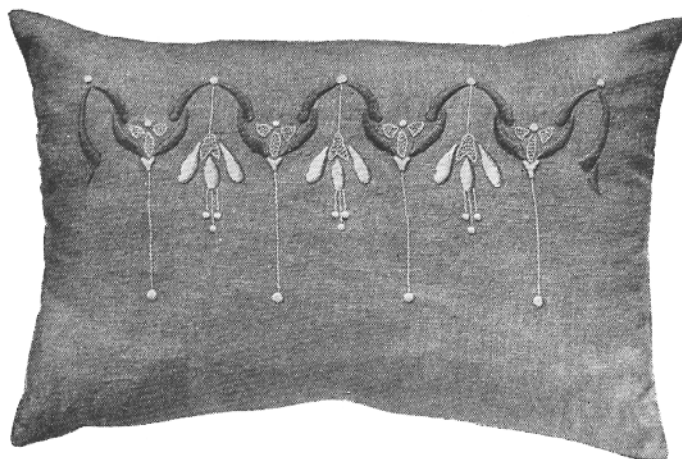


JAPANESE DESIGN USING GOLD THREAD. THE ENDS OF PILLOW ARE FINISHED WITH VELVET

DESIGN No. 153-13. *Size of embroidered band, 13 x 15 inches.* Design for band stamped on écre Bulgarian linen, 30 cents. Embroidery silk and gold thread, 90 cents extra, or cotton and gold thread, 90 cents extra. Perforated pattern, 30 cents; transfer pattern, 10 cents. *Work commenced, 75 cents additional.* *Stamping compound, with directions, 10 and 25 cents a box.*

* ch 8, 1 d in 5th st of first free loop on next wheel, ch 5, 1 d in 5th st on next loop; repeat from * around. 2d row—Make 1 d in each st to end of row, taking

ors, with which is combined gold thread, which gives a very pleasing touch. The hexagonal figures forming the bands are outlined with black, with a gold star in the centre of each. The embroidery extends only through the centre, the ends of the pillow being made of velvet of a very dark shade of old rose, to correspond with the embroidery. Over the seam joining the embroidered piece and the velvet is a strip of gilt braid.



AUTOMOBILE PILLOW EMBROIDERED IN BROWNS

DESIGN No. 153-14. Size 12 x 16 inches. Stamped brown Ramie linen, with same material for back, 50 cents, or given for one subscription, other than your own, and 15 cents. Embroidery cotton, 18 cents extra, or silk, 35 cents extra. Perforated pattern, 25 cents; transfer pattern, 10 cents.

A color scheme will be sent with each pattern of the two designs shown on this page.

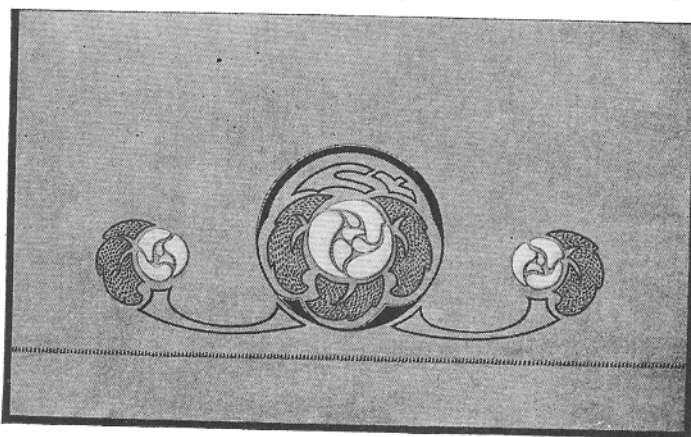
up two loops of each st. 3d row—Make 1 t in 1st d, ch 1, miss 1 d, 1 t in next d; repeat around.

The two pillows shown on page 9 have beautiful Japanese designs. No. 153-12 is made of écu Bulgarian linen, and is embroidered in four shades of delft blue and two of green. Use the blues on all the sections, except the leaves and stems. The diagram will show just where they are placed. All of the work is done solid, with the exception of the large leaves, the surface of which is filled with dots, worked solid or in French knots.

The second pillow, No. 153-13, is worked with a variety of col-

simple conventional design across the top.

The scarf No. 153-15 is made of cream-colored linen, embroidered in two shades of green and rose. The flower is worked solid, the leaves filled with seed-stitches.



SCARF EMBROIDERED IN PINKS AND GREENS

DESIGN No. 153-15. Size, 18 x 54 inches. Stamped cream linen, 85 cents; medium-weight oyster-white linen, \$1.00. Embroidery silk, 55 cents extra, or cotton, 35 cents extra. Perforated pattern, 25 cents; transfer pattern, 15 cents.

Stamping compound, with directions, 10 and 25 cents a box.

Filet Crochet for Wearing Apparel

Band Design No. 153-16 for Yoke and Sleeves

MATERIAL.—Cordonnet crochet cotton No. 30, at 23 cents a ball, and a steel crochet-hook No. 9, at 5 cents.

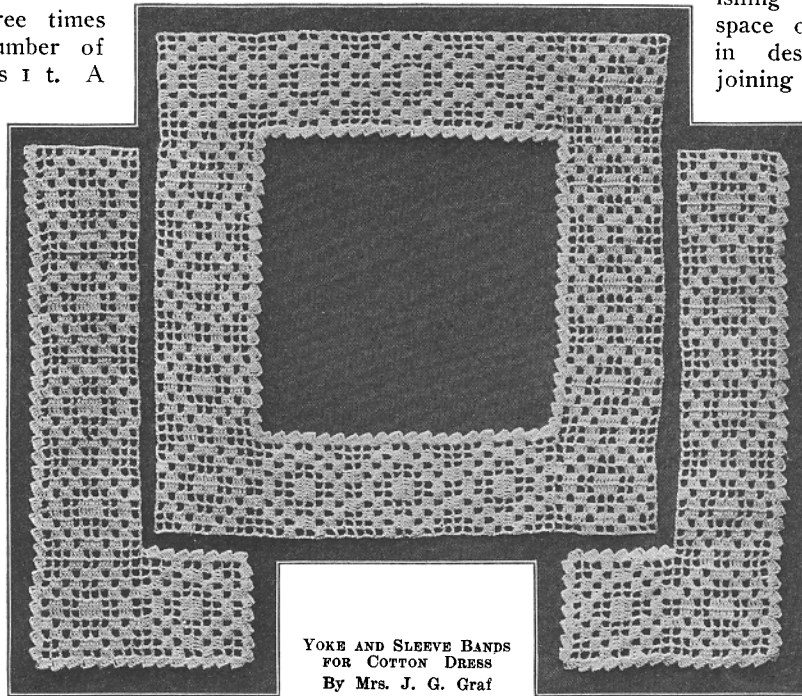
(For description of stitches, see page 44.)

A block (bl) consists of t on t, 2 t in ch, t on t; the number of t in more than one bl should be three times the number of bl, plus 1 t. A

row—Same as 3d row. 9th row—Same as 2d row. 10th row—Same as 1st row.

Begin the yoke at the left side, crochet the design 4 times. Turn and use the edge of the last design as the foundation for the next design, repeat 3 times.

Break the thread, start at inner edge of design and continue with 3 designs, then ch 36 begins the design again, finishing the last space or block in design by joining to pre-



YOKE AND SLEEVE BANDS
FOR COTTON DRESS
By Mrs. J. G. Graf
DESIGN No. 153-16

space (sp) is made by t on t, ch 2, t on t. Always make 5 ch to turn when a space is on the end of the row; make 3 ch for a t, when a block is on the end of a row.

Begin with 37 ch. 1st row—1 d in 9th ch from needle, 2 sp, 1 bl, 2 sp, 1 bl, 3 sp. 2d row—2 sp, 1 bl, 1 sp, 2 bl, 1 sp, 1 bl, 2 sp. 3d row—1 sp, 1 bl, 1 sp, 1 bl, 2 sp, 1 bl, 1 sp, 1 bl, 1 sp. 4th row—1 bl, 1 sp, 1 bl, 4 sp, 1 bl, 1 sp, 1 bl. 5th row—1 sp, 1 bl, 2 sp, 2 bl, 2 sp, 1 bl, 1 sp. 6th row—Same as 5th row. 7th row—Same as 4th row. 8th

vious design with a sl st. Slip stitch on ch of previous design to form the t for 1st space of next row. Repeating the design 4 times completes the yoke.

Start at 2d design from end for inner finish or edge. Fasten the thread over ch of 1st space, ch 3, 3 t over ch of same sp, 1 d in middle of next space, ch 3, 3 t over ch of same space, 1 d in top of t of next space.

Repeat for the entire inner edge of yoke.

The bands for the sleeves are crocheted

in the same manner. Five designs, turn, 1 design for the tab.

The inner finish of yoke is the same as the outer finish of tab and sleeve band.

Filet Crochet Stocks

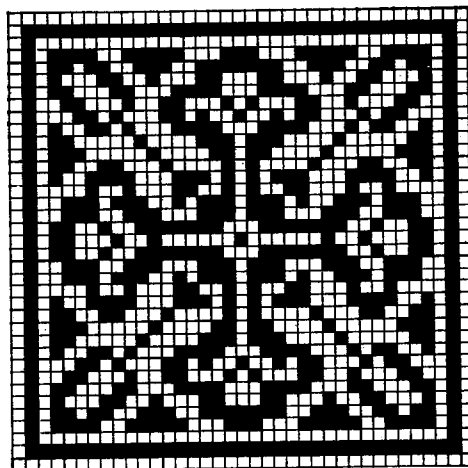
With the return of the stock collar, we find a new adaptation for the popular filet crochet. These stocks are most suitable to be worn with wash waists, and the pattern may be varied to suit one's own fancy. Closing may be back or front, as preferred.

MATERIAL.—Sewing thread No. 36 or 40, or No. 50 Cordonnet crochet cotton, and a No. 10 steel crochet-hook.

COLLAR No. 153-17. EDGE.—Make a ch the desired length, turn, * make 1 d in first 7 sts, ch 4, sl st back in 4th st, ch 4, sl st back in 1st st, over first 4 ch, make 3 d, p (ch 4, catch back in 1st st), 3 d, in 2d 4 ch make 3 d, then ch 4, sl st back in d just before p in first loop. In this loop make 3 d, p, 3 d, and finish second loop with p, 3 d. Repeat across from *.

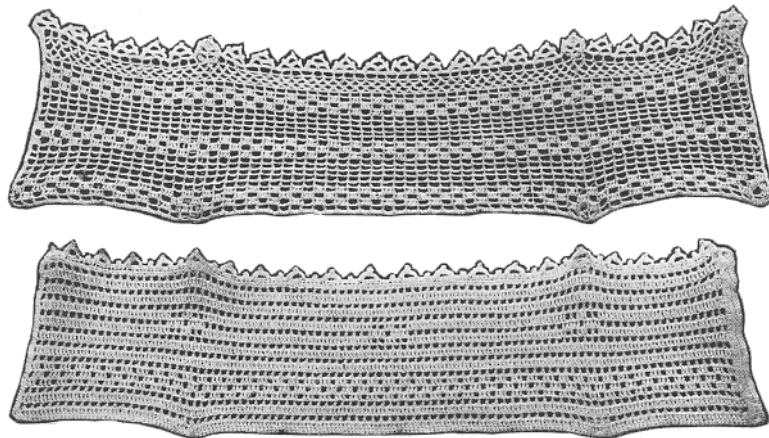
To finish like the collar shown, make a row of t on the lower edge of this strip as follows: *1st row*—3 ch to turn, miss 2 sts on the foundation row to make a space, 1 t, ch 2, miss 2 sts as before, 1 t, and continue making a space and a t to

3d and 4th rows—Like 2d row. *5th row*—3 ch to turn and make a row of ch, catching into each loop of the preceding row with a d. *6th row*—Make a row of



BLOCK PATTERN FOR INSET SHOWN ON PAGE 13

1 t and 1 space, alternating. *7th row*—Make a row of 1 space and 4 t (to form a block) alternating. *8th row*—Make a row of 4 t and 1 space alternating. *9th row*—Like 7th row. *10th, 11th, 12th, 13th, and 14th rows*—Like 6th row. *15th, 16th, and 17th rows*—Same as 7th, 8th, and 9th rows. *18th, 19th, 20th, 21st, and*



TWO FILET CROCHET STOCKS
By Ada L. Avers
DESIGNS No. 153-17 AND 153-18

the end of the row. *2d row*—Make a row of loops, consisting of 5 ch each, catching each loop into the space above.

22d rows—Same as 6th row. *23d, 24th, and 25th rows*—Like 7th, 8th, and 9th rows. *26th row*—Like 6th row. Finish

the ends and bottom of the collar with d.

This collar is high enough to use $2\frac{3}{4}$ -inch collar supports or $2\frac{1}{2}$ -inch, if preferred.

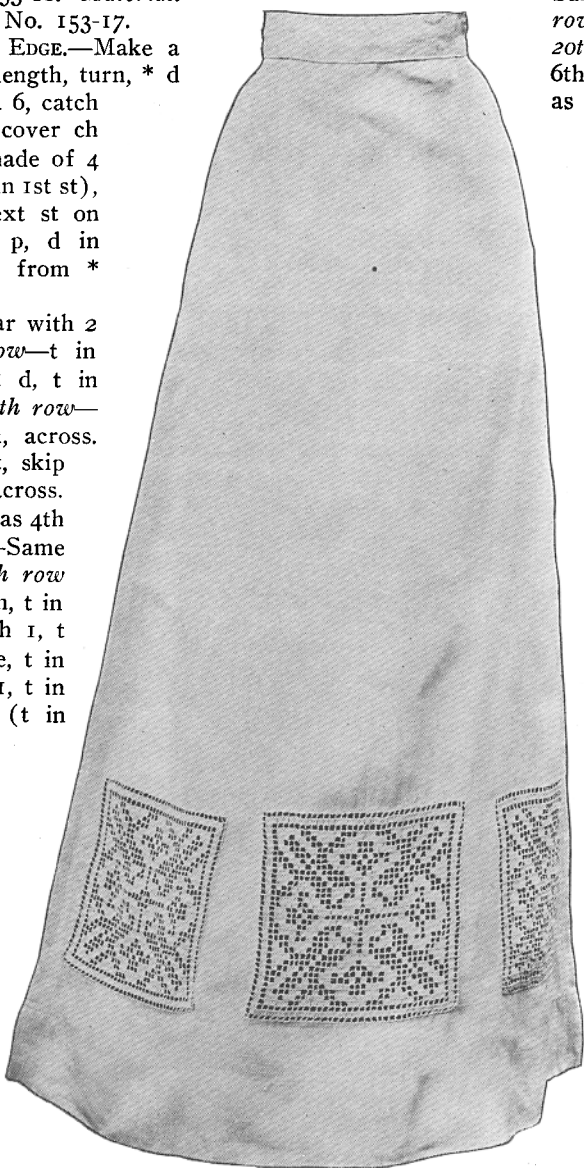
If a lower collar is desired omit the 2d, 3d, 4th, and 5th rows and 13th, 14th, 21st, and 22d rows.

COLLAR No. 153-18. *Material.*
—Same as for No. 153-17.

DIRECTIONS. EDGE.—Make a ch the desired length, turn, * d in first 5 sts, ch 6, catch back in 1st st, cover ch with 4 d, p (made of 4 ch caught back in 1st st), 4 d, 1 d in next st on foundation ch, p, d in next st, repeat from * across.

Continue collar with 2 rows d. 3d row—t in d, ch 1, skip 1 d, t in next, across. 4th row—t in t, t in ch, across. 5th row—t in t, skip 1 t, t in next, across. 6th row—Same as 4th row. 7th row—Same as 5th row. 8th row—t in t, (t in ch, t in t) 17 times, (ch 1, t in next t) twice, t in ch, t in t, (ch 1, t in next t) twice, (t in ch, t in t) 22 times, (ch 1, t in next t) twice, t in ch, t in t (ch 1, t in next t) twice, (t in ch, t in t) 17 times. 9th row—17 sps, (ch 1, t in t), 2 bls, (t in t, t in ch), 1 sp, 2 bls, 22 sps, 2 bls, 1 sp, 2 bls,

22 sps, 2 bls, 1 sp, 2 bls, 17 sps. 10th row—Same as 8th row. 11th row—Same as 7th. 12th row—Same as 6th. 13th row—Same as 7th. 14th row—Same as 6th. 15th row—Same as 7th. 16th row—Alternate blocks and spaces. 17th row—Alternate spaces and blocks. 18th row—Same as 16th. 19th row—Same as 7th. 20th row—Same as 6th. 21st row—Same as 7th. 22d row—Same as 6th. Continuing across one end. 23d row—d in each t, continuing across both ends of collar.



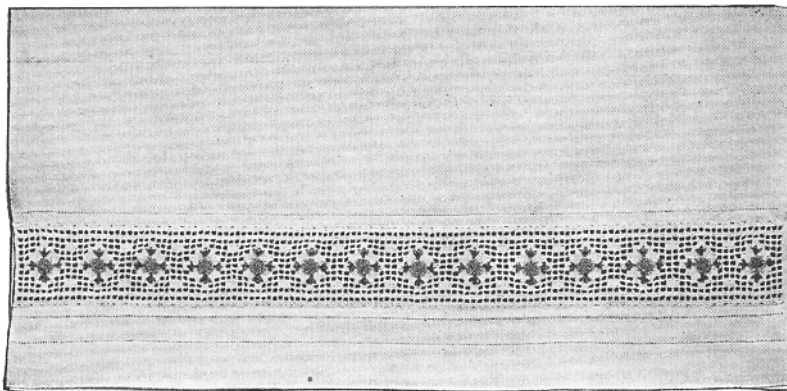
**Square Inset
No. 153-19
for Skirt**

This square is made in true filet crochet, and by observing the few directions given at the head of the article, one will have no difficulty in following the block pattern shown on page 12. The foundation chain is of 117 sts. 1st row—37 sps. 2d row—1 sp, 35 bls, 1 sp. 3d row—1 sp, 1 bl, 33 sps, 1 bl, 1 sp. Continue, following the block pattern. Remember to always ch 5 to turn at the end of the row, or this space will not be square like the others.

WHITE LINEN SKIRT WITH INSETS OF FILET CROCHET

By Julia A. Greene
DESIGN No. 153-19

Towels with Crochet Insertion



EMBROIDERED FILET CROCHET A FEATURE OF THIS TOWEL

By Helen Randolph

DESIGN No. 153-20. Fine linen huckaback, 22 inches wide, 75 cents a yard; 16 inches wide, 60 cents a yard. Cordonnet crochet cotton No. 30, one ball, 23 cents. Steel crochet-hook, 5 cents. Embroidery cotton, 9 cents extra.

BOTH of these towels have insertion made in filet crochet, the first one being further ornamented with embroidered roses.

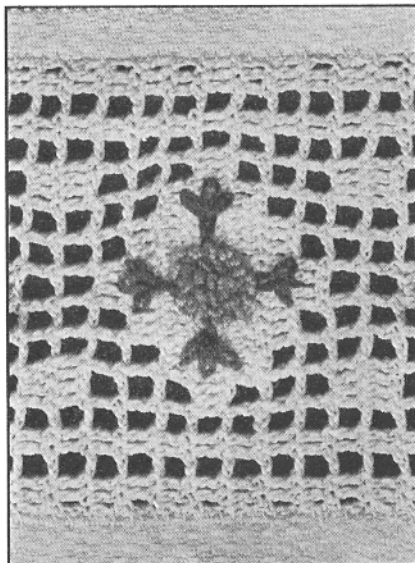
By following a few general directions for filet, one will have no difficulty in doing the work. A block (bl) consists of t on t (for description of stitches see page 44); 2 t in space, t on t; where there is more than one bl, the number of t will be three times the number of bl, plus 1 t. A space (sp) consists of t on t, ch 2, skip 2 sts, t on t. When a space comes at the end of the row, as in No. 153-21, always ch 5 to turn. In design No. 153-20, ch 3 is used for a t.

Towel No. 153-20

MATERIAL. — One ball Cordonnet crochet cotton No. 30, at

23 cents, and a steel crochet-hook No. 8, at 5 cents, and 3 skeins embroidery cotton.

DIRECTIONS.—Chain 40. *1st row*—3 t, 1 sp, 2 t, 9 sp, 2 t, 1 sp, 3 t. *2d row*—3 t, 1 sp, 2 t, 4 sp, 1 bl, 4 sp, 2 t, 1 sp, 3 t. *3d row*—3 t, 1 sp, 2 t, 3 sp, 3 bl, 3 sp, 2 t, 1 sp, 3 t. *4th row*—3 t, 1 sp, 2 t, 2 sp, 5 bl, 2 sp, 2 t, 1 sp, 3 t. *5th row*—3 t, 1 sp, 2 t, 7 bl, 1 sp, 2 t, 1 sp, 3 t. *6th row*—Same as 4th. *7th row*—Same as 3d. *8th row*—Same as 2d. *9th row*—3 t, 1 sp, 2 t, 1 bl, 5 sp, 1 bl, 1 sp, 2 t, 1 sp, 3 t. *10th row*—Same as 9th. Repeat from 2d row to desired length.



DETAIL OF ABOVE INSERTION, FULL SIZE

The roses are made of French knots, in the middle of the squares, 12 knots of medium pink embroidery cotton in the centre, 18 knots of light pink around centre, 3 "lazy-daisy" sts on

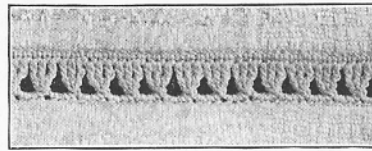
four sides of the rose in light green cotton.

Towel No. 153-21

MATERIAL.—Cordonnet crochet cotton No. 70, at 28 cents a ball, and a No. 12 steel crochet-hook, at 5 cents.

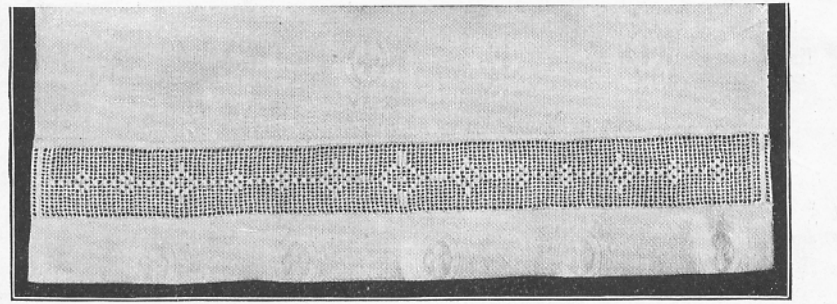
DIRECTIONS.—Chain 56. *1st row*—8 sp, 1 bl, 8 sp. *2d row*—17 sp. *3d row*—8 sp, 1 bl, 8 sp. *4th row*—17 sp. *5th row*—8 sp, 1 bl, 8 sp. *6th row*—17 sp. *7th row*—7 sp, 1 bl, 1 sp, 1 bl, 7 sp. *8th row*—6 sp, 1 bl, 1 sp, 1 bl, 1 sp, 1 bl, 6 sp. *9th row*—7 sp, 1 bl, 1 sp, 1 bl, 7 sp. *10th row*—17 sp. *11th row*—8 sp, 1 bl, 8 sp. *12th row*—17 sp. *13th row*—8 sp, 1 bl, 8 sp. *14th row*—17 sp. *15th row*—8 sp, 1 bl, 8 sp. *16th row*—17 sp. *17th row*—7 sp, 1 bl, 1 sp, 1 bl, 7 sp. *18th row*—6 sp, 1 bl, 1 sp, 1 bl, 1 sp, 1 bl, 6 sp. *19th row*—7 sp, 1 bl, 1 sp, 1 bl, 7 sp. *20th row*—17 sp. *21st row*—8 sp, 1 bl, 8 sp. *22d row*—17 sp. *23d row*—8 sp, 1 bl, 8 sp. *24th row*—17 sp. *25th row*—8 sp, 1 bl, 8 sp. *26th row*—17 sp. *27th row*—8 sp, 1 bl, 8 sp. *28th row*—7 sp, 1 bl, 1 sp, 1 bl, 7 sp. *29th row*—6 sp, 1 bl,

3 sp, 1 bl, 3 sp, 3 bl, 2 sp. *79th row*—2 sp, 3 bl, 3 sp, 1 bl, 3 sp, 3 bl, 2 sp. *80th row*—5 sp, 1 bl, 5 sp, 1 bl, 5 sp. *81st row*—6 sp, 1 bl, 3 sp, 1 bl, 6 sp. *82d row*—7 sp, 1 bl, 1 sp, 1 bl, 7 sp. *83d row*—8 sp, 1 bl, 8 sp. *84th row*—17 sp. *85th row*—8 sp, 1 bl, 8 sp. *86th row*—8 sp,



IMITATION HEMSTITCH IN CROCHET

1 bl, 8 sp. *87th row*—8 sp, 1 bl, 8 sp. *88th row*—8 sp, 1 bl, 8 sp. *89th row*—17 sp. * *90th row*—8 sp, 1 bl, 8 sp. *91st row*—7 sp, 1 bl, 1 sp, 1 bl, 7 sp. *92d row*—6 sp, 1 bl, 3 sp, 1 bl, 6 sp. *93d row*—4 sp, 2 bl, 2 sp, 1 bl, 2 sp, 2 bl, 4 sp. *94th row*—6 sp, 1 bl, 3 sp, 1 bl, 6 sp. *95th row*—7 sp, 1 bl, 1 sp, 1 bl, 7 sp. *96th row*—8 sp, 1 bl, 8 sp. *97th row*—17 sp. *98th row*—8 sp, 1 bl, 8 sp. *99th row*—17 sp. *100th row*—8 sp, 1 bl, 8 sp. *101st row*—



A SIMPLE FILET INSERTION

By Hattie M. Loring

DESIGN No. 153-21. Fine linen huckaback, 22 inches wide, 75 cents a yard; 16 inches wide, 60 cents a yard. Cordonnet crochet cotton No. 70, 28 cents a ball. Steel crochet-hook No. 12, 5 cents.

3 sp, 1 bl, 6 sp. *30th row*—4 sp, 2 bl, 2 sp, 1 bl, 2 sp, 2 bl, 4 sp. *31st row*—6 sp, 1 bl, 3 sp, 1 bl, 6 sp. *32d row*—7 sp, 1 bl, 1 sp, 1 bl, 7 sp. *33d row*—8 sp, 1 bl, 8 sp. *34th row*—17 sp. From here, repeat work from beginning, then continue as follows. *60th row*—8 sp, 1 bl, 8 sp. *70th row*—8 sp, 1 bl, 8 sp. *71st row*—8 sp, 1 bl, 8 sp. *72d row*—8 sp, 1 bl, 8 sp. *73d row*—17 sp. *74th row*—8 sp, 1 bl, 8 sp. *75th row*—7 sp, 1 bl, 1 sp, 1 bl, 7 sp. *76th row*—6 sp, 1 bl, 3 sp, 1 bl, 6 sp. *77th row*—5 sp, 1 bl, 5 sp, 1 bl, 5 sp. *78th row*—2 sp, 3 bl,

17 sp. *102d row*—8 sp, 1 bl, 8 sp. *103d row*—17 sp. *104th row*—7 sp, 1 bl, 1 sp, 1 bl, 7 sp. *105th row*—6 sp, 1 bl, 1 sp, 1 bl, 1 sp, 1 bl, 6 sp. *106th row*—7 sp, 1 bl, 1 sp, 1 bl, 7 sp. *107th row*—17 sp. *108th row*—8 sp, 1 bl, 8 sp. *109th row*—17 sp. *110th row*—8 sp, 1 bl, 8 sp. *111th row*—17 sp. *112th row*—8 sp, 1 bl, 8 sp. *113th row*—17 sp. *114th row*—7 sp, 1 bl, 1 sp, 1 bl, 7 sp. *115th row*—6 sp, 1 bl, 1 sp, 1 bl, 1 sp, 1 bl, 6 sp. *116th row*—7 sp, 1 bl, 1 sp, 1 bl, 7 sp. *117th row*—

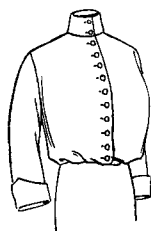
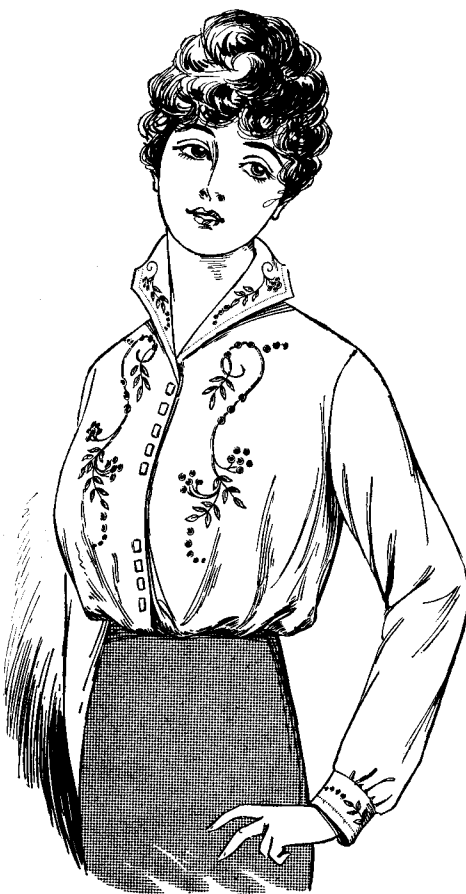
[CONCLUDED ON PAGE 44]

Embroideries for the Summer Wardrobe

THE new waists do not seem to show the decided change that is quite evident in the skirt, where the circular pattern has largely taken the place of the narrow plain skirt.

The first waist, No. 153-22, shows a pattern of severe lines, relieved somewhat by the good-fitting roll collar. Three materials may be used equally well, linen cambric, lawn, or batiste.

The embroidery design is of eyelet and solid work, done all in white. The line cuts at each side show the

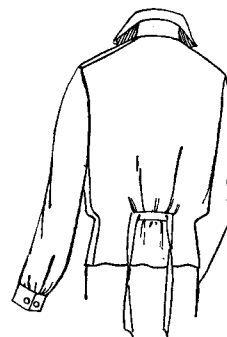


FRONT VIEW
SHOWING HIGH
COLLAR

WAIST WITH FRENCH AND EYELET EMBROIDERY
DESIGN No. 153-22. Embroidery design stamped on white linen, \$2.25; cotton lawn, \$1.25. Embroidery cotton, 9 cents extra. Perforated pattern of design, 35 cents; transfer pattern, 15 cents. Paper cutting pattern, No. 7017, sizes 34 to 44 inches bust measure. Price of pattern, 15 cents.

around the bottom, while the other one has a fold down the centre of the front.

The little coat is very handsome, for, besides the smart cut, it is made more attractive by the embroidery design. The pattern is very conventional, and is used in the form of a border, which extends around the coat, collar, and sleeves. The lines are outlined, and the squares and triangles are worked solid. White linen is particularly good material for this model.



BACK VIEW

method of making the back, also another way of cutting the collar and closing the front. For cutting according to illustration, the neck and shoulder lines are stamped on the material. The collar and cuff outlines are also stamped.

Two particularly good-looking dress models are shown, both having the new circular skirt, which are cut from the same pattern. One skirt shows the plain front, with a wide separate piece stitched on

The second dress is made with an overblouse of the same material as the skirt, in this case also, for summer use, white linen would be preferable. However, if a heavier material is preferred for either gown, white serge or any of the light-weight wools would look well. In this case the embroidery would be done in silk. In design No. 153-23 the lines might be done in chain-stitch, or even braided with soutache braid in white or color.



LADIES' COSTUME WITH NEW SHORT COAT

EMBROIDERY DESIGN No. 153-23. Perforated pattern of embroidery design, 45 cents. Embroidery silk, white or any preferred color, 50 cents extra, or cotton, 18 cents extra. Paper cutting pattern No. 7065, sizes, 32, 36, 40, and 44 inches bust measure, may be used for cutting jacket. Price of pattern, 10 cents. Skirt pattern, No. 7069, sizes, 23½, 24, 24½, and 25 inches waist measure. Price, 10 cents.



LADIES' DRESS WITH OVERBLOUSE

EMBROIDERY DESIGN No. 153-24. Perforated pattern, of embroidery design, 35 cents. Embroidery cotton, white or any preferred color, 15 cents extra, or silk, 50 cents extra. Paper cutting pattern No. 7040, sizes, 34 to 44 inches bust measure, may be used for cutting waist. Price of pattern, 15 cents. Skirt pattern, No. 7069, sizes, 23½, 24, 24½, and 25 inches waist measure. Price of pattern, 10 cents.

Two Piqué Hats for Children

FOR the small child, nothing is more appropriate or serviceable than the white piqué hats.

The two models shown on this page are unusually attractive, and are especially desirable on account of the easy laundering.



THE CROWN IS SEWED TO THE BRIM, WHICH IS SLASHED IN BACK

DESIGN No. 153-25. Stamped piqué, 65 cents, or given for one subscription, other than your own, and 30 cents. White embroidery cotton, 12 cents extra. Perforated pattern of design and outline for cutting, 35 cents; no transfer pattern. Work commenced, 75 cents additional.

The crowns are always made of a single thickness of the material, but the brim should be double, in order to give the desired firmness. When the edge is buttonholed the design should be worked and pressed first, then baste on the lining very carefully, and work the buttonhole-stitches through both thicknesses. This gives a very neat finish to the wrong side. When the edge is plain, the design should be worked, then the lining sewed along the stamped outline on the outer edge. Turn, and press flat. Some prefer to make a row of stitching on the edge of the brim, but this is not necessary.

The first hat, No. 153-25, has the crown fulled right on to the brim, the seam being turned in between the two thicknesses to give it a neat finish. A straight band of the material, finished at the end with three scallops, is the only trimming necessary. The brim is somewhat wider

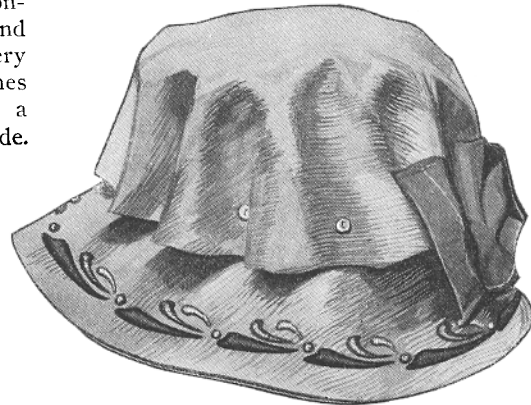
in front, and is slashed to the head-size in back, the corners being rounded.

The second hat, No. 153-26, has the embroidery done in three shades of delft blue, a color diagram, which is sent with each pattern, showing just where they are to be used. Each section should be padded and worked solid.

Nothing could be easier for laundering than this pattern, as the brim is slashed in back so it can be laid perfectly flat for ironing. As seen in the illustration, the crown is buttoned on to the brim, so this also can be removed and laid flat. The hat may be worn plain with no trimming, or a big bow of blue ribbon, matching the embroidery, may be used at the back for a finish. Of course, other colors may be substituted if one prefers.

Piqué, being a ribbed material, is somewhat harder to embroider smoothly than plain. This being the case, it is always well to run the stamped line of each section with fine stitches, as these stitches serve as a more accurate guide when taking the embroidery stitches.

Either of these designs might also be used for either lawn or linen hats, and can very easily be stamped at home.



THE CROWN IS BUTTONED TO THE BRIM AND IS EASILY LAUNDERED

DESIGN No. 153-26. Stamped piqué and blue chambray for lining and bow, 65 cents, or given for one subscription, other than your own, and 30 cents. Embroidery cotton, 12 cents extra, or silk, 40 cents extra. Perforated pattern, 30 cents; no transfer pattern. A color scheme will be sent with each pattern.

Infants' Belted Jacket

By Mary Goddard

MATERIAL. — Two and one-half hanks three-ply Saxony (white), 1 hank three-ply Saxony (color); 1 pair each, sizes 2 and 3 bone or rubber knitting-needles; and a bone crochet-hook No. 2.

ABBREVIATION OF STITCHES:—*Stitch* (st); *stitches* (sts); *knit* (k); *purl* (p); *together* (tog).

DIRECTIONS.—Wherever color or white is joined care must be taken that the *right* side of jacket is always *towards* the worker. (This direction will *not* be repeated.)

Set up with white wool, on No. 3 needles

The entire belt should be 176 sts long.

2d row—Knit 2, p 2, for 5 rows more.

8th row—* Knit 4, throw thread over, k 2 tog; repeat from * across row.

9th row—Purl back, picking up thread thrown over, this makes row of holes for ribbon.

Repeat 5 rows of k 2, p 2, care being taken to make ribs correspond as before making holes. This completes the belt.

Join white, using No. 3 needles. Knit reverse st as in ruffle for 35 rows. Now divide all sts on needle as follows: Each front 48 sts; back, 80 sts.



THE JACKET IS MADE WITH TWO COLORS AND ONLY PLAIN STITCHES ARE USED

dles, 214 sts. *1st row*—Knit 2, p 2, across entire row. *2d row*—Reverse st, making 2 and 2 alternate plain and p; where on right side it is plain, make p, etc. This reverse st is continued for 35 rows. These 35 rows make the ruffle *below* the belt.

BELT.—Join color with No. 2 needles. *1st row*—Knit 10 plain, k 2 tog, every other st, until within 20 sts of where an under-arm seam would be, k these 20 sts plain (this makes 48 sts for one front), from under-arm, towards back, k 15 sts plain, then 2 tog every other st, until within 15 sts of other under-arm seam, k these 15 sts plain as before (80 sts across back). Continue other front from here the same as first one, following above directions.

BACK.—Knit reverse st for 30 rows.

* Join color, k 2, p 2, for 4 rows. Join white, k 2, p 2, for four rows. Join color, k 2, p 2, for 4 rows*.

The above 12 rows are done with No. 2 needles.

Put 28 sts on needle or safety-pin for further direction, bind off 24 sts for back of neck, put other 28 sts on needle or safety-pin for further directions.

Take the 48 sts left for one front and with the No. 3 needles continue it as follows: Knit reverse st for 30 rows (No. 2 needles). Join color, repeating directions given for back between stars for the 12 rows, with No. 2 needles, then bind off

[CONTINUED ON PAGE 42]

Seersucker Lingerie

FOR common use, seersucker is almost invaluable, not only because the material is very serviceable, but also because it is so easily laundered, requiring no ironing, unless the lace is pressed.



COMBINATION WITH OPEN DRAWERS

DESIGN No. 153-27. Design stamped on seersucker, \$1.00, or given for three subscriptions, of which your own may be one. Embroidery cotton, 21 cents extra, or silk, 70 cents extra. Valenciennes lace and beading, 90 cents. Perforated pattern, 35 cents; transfer pattern, 15 cents. Paper cutting pattern, No. 6158, sizes 34 to 42 inches bust measure, may be used for cutting combination. Price of pattern, 15 cents.

On these pages is shown a set, consisting of combination, nightgown, and skirt. The chrysanthemum motif, applied in various forms, is used on all three garments. Work the petals and leaves solid, making the padding-stitches lengthwise and the embroidery stitches across. When the surface between the lines is wide, chain-stitches may be used for padding, otherwise use a succession of outline-stitches. Take the embroidery stitches very close, but not enough to overlap, as this gives a very uneven appearance. The stems may be worked in outlining, although the stem-stitch looks much better with the solid work. When making this, run the stamped line with fine stitches, then over these stitches make narrow satin-stitches, taking up only as much of the material as is necessary. Be sure the stitches are taken very close, so the line will appear unbroken, and take up only as much of the material as is necessary.

The dots are all worked solid in pink, blue, or any preferred color. Be sure and make them perfectly round, also be careful in making the graduated dots. Always have the padding-stitches run in the opposite direction from the embroidery stitches, and have the embroidery stitches on all the dots run in the same direction. No buttonholing is used, but the edges are finished with narrow hems on which is sewed lace, using beading around the neck and for a heading for the skirt flounce.

The combination consists of corset-cover and open drawers, the garment opening in the front. The corset-cover closes in the front, and is fulled into the belt. The drawers are slashed at the side, with a motif each side of the opening. The nightgown is kimono style, made in one piece, and is to be slipped on over the head. The edge of the sleeve is slightly slashed also.

One may use white ribbon in the beading, but ribbon matching the color used for the dots is much more attractive.



KIMONO NIGHTGOWN

DESIGN No. 153-28. Stamped seersucker (5 yards), \$1.25. Embroidery cotton, 24 cents extra, or silk, 70 cents extra. Valenciennes lace and beading, 45 cents. Perforated pattern, 35 cents; transfer pattern, 15 cents. *Work commenced, 75 cents additional.*



THE DESIGN IS USED ON THE FRONT AND SIDES OF FLOUNCE

DESIGN No. 153-29. Design stamped on seersucker for flounce and same material to complete petticoat, \$1.10. Embroidery cotton, 33 cents extra, or silk, \$1.00 extra. Valenciennes lace and beading, 70 cents. Perforated pattern of embroidery design, 25 cents; transfer pattern, 10 cents. Paper cutting pattern No. 5873, sizes 22 to 34 inches waist measure, may be used for cutting petticoat. Price of pattern, 15 cents. *Stamping compound, with directions, 10 and 25 cents a box.*

A Waist and Three Collars

ONE of the newest spring waist models, shown on this page, is made with the roll collar and long sleeves. The material is voile, or batiste may be used if one prefers, on which rather heavy embroidery

way would be to make two rows of lazy-daisy stitches, the first row extending to the edge of the flower, and the next one not quite as long. The flower centres are worked solid, with a very little padding.



BLOUSE WITH ROLL COLLAR AND LONG SLEEVES

DESIGN No. 153-30. Stamped mercerized cotton voile, \$1.75; batiste, \$2.00. Embroidery cotton, 21 cents extra. Perforated pattern, 40 cents; no transfer pattern.
Work commenced, 75 cents additional.

always looks well. The special feature of the design is the use of the buttonholed scallops which give the pretty vest effect. The pieces for the vest should be cut, then the scallops basted over them and the stitches taken through both thicknesses. This makes a neat finish. A slight padding should be used, so the embroidery stitches will not lie close to the material. Pad the dots and work them solid; work the leaves in the same way.

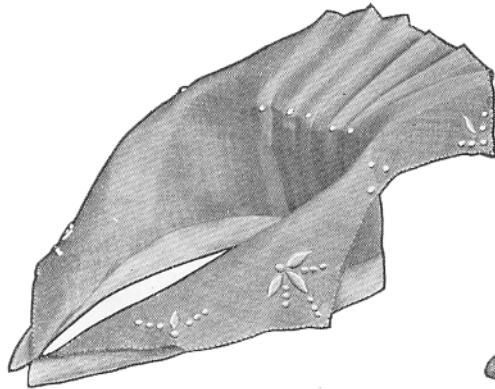
The flowers may be made in long-and-short stitches, but a much more effective

Irish crochet buttons are used at the front closing.

The cuffs are made separate, and sewed to the bottom of the sleeve, just tacking the point in place. The sleeves at the top are plain. The back of the waist is made perfectly plain, with a very little fulness appearing in the front in the shoulder seam. The pieces used for the vest are cut on the bias, the front edge being turned back and hemmed, or a narrow facing may be used. The collar is only one thickness of the material, and is

attached to the waist with a narrow hem.

There is always something new in collars, the very newest being like model No. 153-31. This is made of organdy; the



A SMART FLARE COLLAR

By Emma L. Boardman

DESIGN No. 153-31. Stamped organdy, 25 cents. Embroidery cotton, 3 cents extra. Perforated pattern, 20 cents; transfer pattern, 10 cents. *Work commenced, 75 cents additional.*

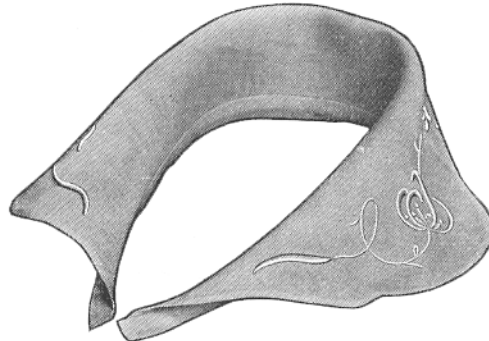
front having the roll effect, with the frill in back made by taking tucks in the lower part of the collar, stitching them up part way and then leaving them loose.

The embroidery design is very simple, having a small motif in each point, and a dot on each tuck. These are padded and worked solid. The edge has a novel finish, first rolling it, and then working tiny cross-stitches over the roll. This looks well done in color.

Collar No. 153-32 is one of the popular roll collars, also

made of organdy, and embroidered with a simple design, a section of which extends across the back. All of the work is done solid. The collar is lined with plain material the same as the top, and a narrow binding is sewed around the neck edge.

A handsome chemisette is made of lawn, and is embroidered with either white or color. If color is used, it

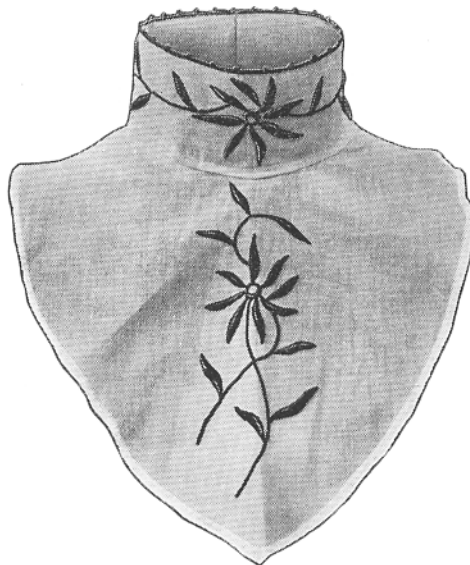


A GOOD-FITTING ROLL COLLAR

DESIGN No. 153-32. Neck measure, 21 inches. Stamped organdy, 25 cents. Embroidery cotton, 6 cents extra. Perforated pattern, 20 cents; transfer pattern, 10 cents.

should match the color of the gown with which it is to be worn. The work is done solid, but with very little padding, so it will appear quite flat.

The collar is finished with a narrow hem, over which is made a picot edge. When making, hold the edge toward you, make eight buttonhole-stitches over the hem, catch back three stitches, leaving a loop which should be filled with buttonhole - stitches.

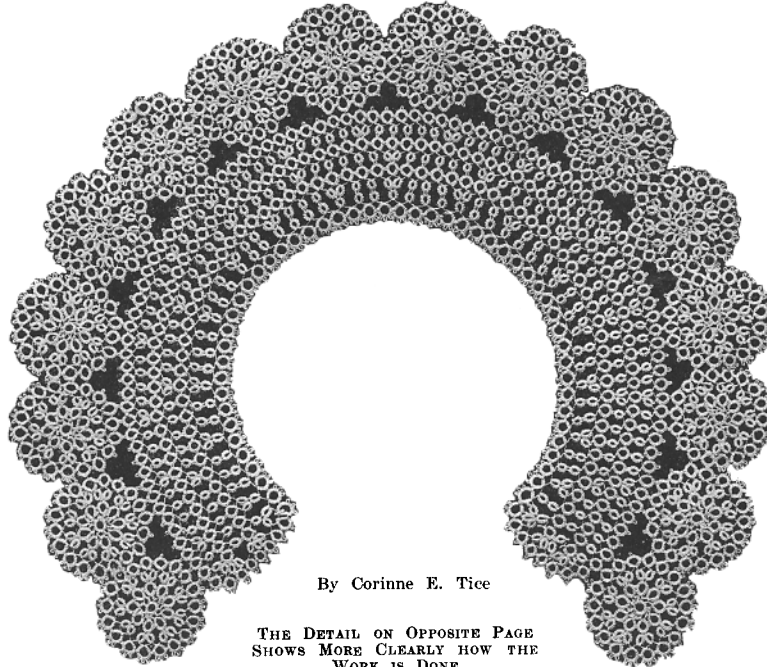


CHEMISETTE EMBROIDERED IN COLOR

By Mrs. M. L. Williams

DESIGN No. 153-33. Stamped linen cambric, 50 cents; Persian lawn, 30 cents. Embroidery cotton, white or any preferred color, 6 cents extra, or silk, 20 cents extra. Perforated pattern, 25 cents; transfer pattern, 10 cents. *Stamping compound, with directions, 10 and 25 cents a box.*

Pretty Tatted Neckwear



By Corinne E. Tice

THE DETAIL ON OPPOSITE PAGE
SHOWS MORE CLEARLY HOW THE
WORK IS DONE

MATERIAL.—Number 30 Cordonnet
crochet cotton, at 23 cents a ball,
and a bone tatting-shuttle, at 10 cents.

ABBREVIATION OF TERMS.—*Stitch* (st);
stitches (sts); *chain* (ch); *double stitches*
(d s); *picot* (p); *ring* (r).

1st and 2d rows—Make a r of 4 d s,
p, 3 d s, p, 2 d s, p, 2 d s, p, 3 d s, p, 4
d s and close. Turn and make a r of 5 d s,
p, 5 d s and close. The 1st and 2d rows
contains 52 of these large and small rings.
3d and 4th rows—Make a r of 4 d s, p,
4 d s, p, 4 d s, p, 4 d s and close. Turn
and make a r of 5 d s, join to p of small
r in 2d row, 5 d s and close. Double
small rings in 3d row (that is, join two in
one picot) in every third r for 5 times,
then skip three r and double, then two
and double, then three and double, then
two and double, three and double, two and
double, two and double, three and double,
two and double, three and double. *5th
and 6th rows*—Make the same as 3d and
4th rows, doubling as follows: In 5th,

11th, 16th, 22d, 28th, 34th, 40th, 45th,
51st, 56th, 62d rings. *7th and 8th rows*—
Make the same as 3d and 4th rows, doub-
ling in the following rings; 7th, 13th, 19th,
24th, 31st, 36th, 42d, 47th, 53d, 57th, 63d,
68th, 72d, and 77th. By following these
instructions there should be 99 rings
around the bottom part of collar, to which
to fasten wheels. Finish ends by making
r of 4 d s, p, 4 d s, p, 4 d s, p, and 4 d s;
turning and making the small r of 5 d s,
joining to side of collar, 5 d s and close.
Join one of these small r at intersection
of 2d and 3d rows; join three to 4th row,
two to side of 6th row, and two to bot-
tom of 6th row, as shown in illustration.

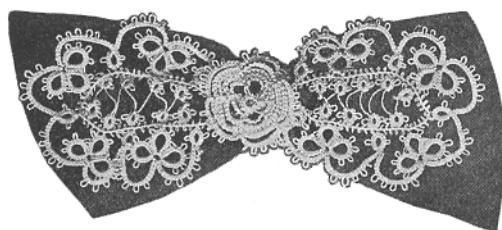
WHEELS.—Make a r of 1 d s, p, 8 p,
separated by 2 d s, 1 d s and close. With-
out breaking thread make a r of 4 d s, p,
4 d s, p, 4 d s, p, 4 d s and close. Pull
thread through one of the large p on cen-
tre r, make another of these r, joining
at 1st p, and continue until you have a
r joined to each p of centre r, making

9 r around the centre. Break thread. Then make a r of 5 d s, join to p in 2d row of wheel, 5 d s and close. Turn and make a r of 4 d s, p, 3 d s, p, 2 d s, p, 2 d s, p, 3 d s, p, 4 d s and close. Make another small r and join in same p as first. Continue around the wheel, making 18 large and 18 small r. Join 3 r on wheel to 3 on top part of collar, skipping 3 r between each wheel. There are 16 wheels in all. Do not make the r which are joined quite as large as the outside r. The end wheels have twelve large r and six as follows: Four d s, p, 4 d s, p, 4 d s, p, and 4 d s. The other wheels have nine large r on the outside and nine small ones.

Tatted Jabot

MATERIAL.—Finest picot braid and Cordonnet crochet cotton No. 50, at 23 cents a ball.

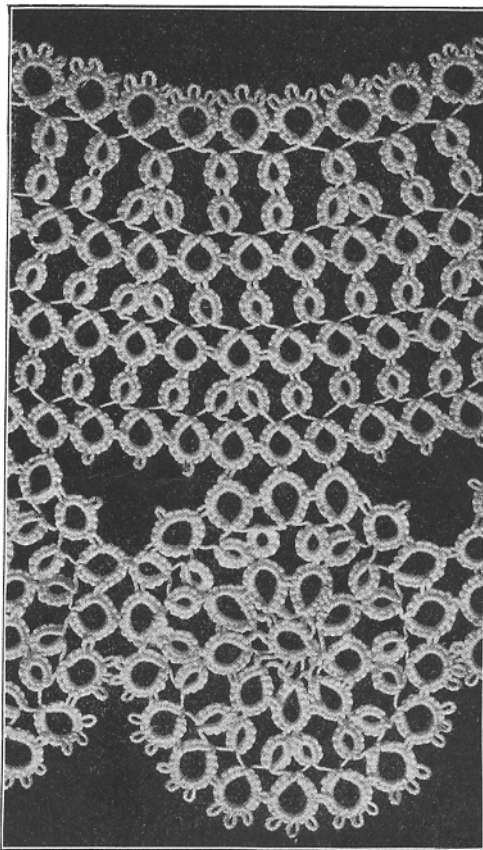
Take five inches of picot braid, make 2 d s, p, 2 d s, join to p of braid, about an inch from end, 2 d s, p, 2 d s, close, allow thread $\frac{1}{8}$ inch and repeat r, and join to braid same distance from other end. Allow thread between rings to be suitable length to cause braid to form a loop. Repeat rings and join until the loop is filled as desired. Repeat whole for another loop. Join to opposite side of braid, r, 2 d s, p, 2 d s, join to braid a little nearer end than inside r's, 2 d s, p, 2 d s, close. Tie on spool thread, ch 2 d s, 5 p separated by 2 d s, 2 d s. * Ring for clover leaf (c l), 5 d s, 5 p separated by 2 d s, 5 d s, close. Repeat r, joining 1st p to last p of 1st r, and 3d p to de-



TATTED JABOT
By Lena M. Brooks

scribable p of braid. Repeat for 3d r and complete c l. Chain 6 d s, 5 p separated by 2 d s, 6 d s, r, 2 d s, p, 2 d s, join to braid,

2 d s, p, 2 d s, close; repeat from * until there are 5 r's and 4 c l's, last ch same as first. Finish first braid loop the same



DETAIL OF TATTED COLLAR

and join ends as desired. Finish where ends are joined with rose—r, 5 p separated by 2 d s, close, tie and cut. Tie shuttle and spool threads to one p of r, ch 5 d s, join to next p; repeat once around, ch 7 d s, join same as 1st row, ch 9 d s, once around, ch 12 d s once around. Chain 3 d s, 5 p separated by 2 d s, 3 d s, join as before, once around, tie and cut.

Two-and-one-quarter-inch velvet ribbon, six inches in length, may be used.

This ribbon is gathered at the centre, just a trifle narrower than the rose, and fastened with blind stitches. It will also be necessary to take a few stitches on the ends of the jabot.

Crocheted Bead Trimmings

Directions by Belle Robinson

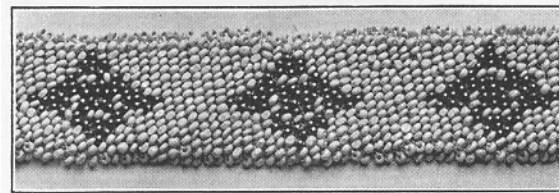


FIG. 1. GROUND OF OPAQUE WHITE OR OPAL, DESIGN OF TURQUOISE

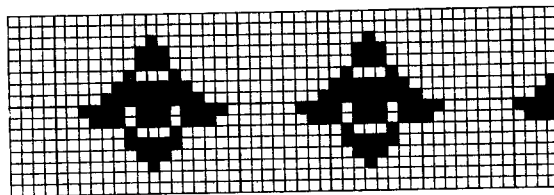


DIAGRAM OF FIG. 1

IN making these bead trimmings, the materials used are spool silk (cream or white), letter C, steel crochet-needle No. 14, and the finest beads. Larger beads may be used with good results if one prefers, but these are of the very smallest size.

The beads are strung on the spool according to the detailed di-

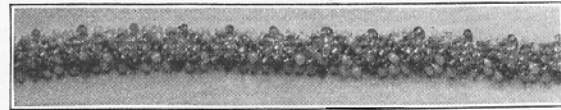


FIG. 2. OLD ROSE AND MEDIUM GREEN. GROUND OF CRYSTAL

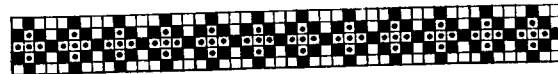


DIAGRAM OF FIG. 2

- Old Rose
- Medium Green

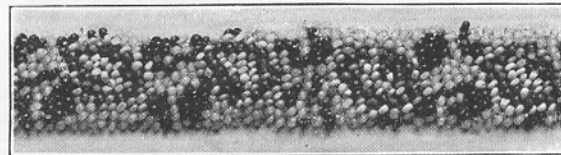


FIG. 3. SYMBOLS AND DIAGRAM SHOWN BELOW

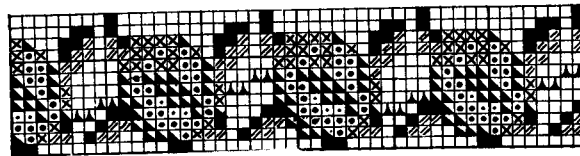


DIAGRAM OF FIG. 3

- ▲ Black
- ▨ Dark Green Glass
- Light Green Opaque
- Scarlet, white lined
- ✕ Dark Pink Opaque
- ▴ Light Pink Opaque
- White Opaque

rections which follow for each of these trimmings. Then the crocheting is done back and forth, leaving a bead at each stitch. The stitch with which they are crocheted is double crochet (a loop on the needle, loop through the work, loop through both on the needle). A peculiar method is employed for the second, fourth, sixth, and all rows of even number. After the chain is made the required number of stitches for the width of the trimming (in the case of Fig. 1 it is sixteen, Fig. 2 is five, and Fig. 3 is twelve beads wide), add one more chain-stitch to turn.

Miss one stitch, and after drawing a loop through the next chain-stitch, let a bead fall close to the back of the stitch and finish by drawing a loop through the two on the needle. Work across the row, into every chain-stitch, with a bead at each stitch, ch 1 to turn, but do not turn the work. Crochet the second row back from left to right; while this may seem hard yet by this means it is possible to crochet without breaking the thread and starting anew at each row. The beads being strung in the right order will

fall in place without any trouble. Chain 1 at the end of the second row and crochet back in the usual way for the third, fifth, seventh, and all rows of odd numbers.

The stringing of the beads will be given for two sections of each design, and is to be repeated the required number of times to make the whole piece. However, it is best to string, as per directions, only twice for the wider trimmings and that will make the design four times; the thread can be cut and string again as at the beginning. By crocheting a few stitches over the old and new threads together it will securely piece the thread.

The color of the ground of Fig. 1 may be of opaque white or of opal, as one prefers, and the design of turquoise.

String 8 opal (op), 1 turquoise (turq), 13 op, 2 turq, 15 op, 3 turq, 12 op, 4 turq, 11 op, 3 turq, 2 op, 2 turq, 7 op, 2 turq, 1 op, 4 turq, 1 op, 2 turq, 5 op, 3 turq, 1 op, 4 turq, 1 op, 3 turq, 5 op, 2 turq, 1 op, 4 turq, 1 op, 2 turq, 8 op, 3 turq, 2 op, 2 turq, 10 op, 4 turq, 13 op, 3 turq, 12 op, 2 turq, 16 op, 1 turq, 110 op, 1 turq, 16 op, 2 turq, 12 op, 3 turq, 13 op, 4 turq, 10 op, 2 turq, 2 op, 3 turq, 8 op, 2 turq, 1 op, 4 turq, 1 op, 2 turq, 5 op, 3 turq, 1 op, 4 turq, 1 op, 3 turq, 5 op, 2 turq, 1 op, 4 turq, 1 op, 2 turq, 7 op, 2 turq, 2 op, 3 turq, 11 op, 4 turq, 12 op, 3 turq, 15 op, 2 turq, 13 op, 1 turq, 104 op. By repeating this stringing once there will be enough beads on the thread to make four patterns. The last 104 opal beads will be the first crocheted and will make the six rows of ground and 8 beads that precede the first turquoise bead.

Begin at the lower left-hand corner of the pattern and make a chain of 16 plus 1 to turn. The first row is worked down, the second row up, etc.

The colors of Fig. 2 are old rose, medium green, and ground of crystal, as shown by the symbols.

String 2 crystal, 1 rose, 3 crystal, 1 rose, 1 green, 1 rose, 1 crystal, 1 rose, 3 green, 1 rose, 1 crystal, 1 rose, 1 green, 1 rose, 3 crystal, 1 rose, 3 crystal, 1 rose, 1 green, 1 rose, 1 crystal, 1 rose, 3 green, 1 rose, 1 crystal, 1 rose, 1 green, 1 rose, 1 crystal. Repeat as many times as the beads

will slip easily on the thread; strung six times will make the twelve figures of the pattern. Chain 5 plus 1 to turn.

The colors of Fig. 3 are indicated, the ground is of opal, and the abbreviations are as follows: Black, bl; dark green glass, d gr; light green opaque, l gr; scarlet-white lined, red; dark pink opaque, d pk; light pink opaque, l pk; opal, op.

String 2 op, 1 d pk, 1 red, 1 d pk, 2 l pk, 1 white, 2 red, 1 l pk, 2 op, 2 l pk, 3 red, 1 l pk, 1 red, 2 d pk, 4 op, 3 d pk, 2 red, 3 l pk, 4 op, 1 d gr, 1 l gr, 3 l pk, 1 d pk, 1 d gr, 1 l gr, 2 op, 2 l gr, 2 d gr, 1 op, 2 bl, 2 op, 1 l gr, 2 d gr, 2 op, 1 d gr, 1 l gr, 3 op, 1 bl, 6 op, 1 l gr, 2 d gr, 2 op, 1 bl, 3 op, 1 l gr, 6 op, 1 bl, 1 op, 2 d gr, 2 l gr, 3 op, 2 l gr, 2 d gr, 2 d pk, 1 l pk, 1 l gr, 1 d gr, 2 op, 1 d gr, 1 d pk, 2 red, 3 l pk, 7 op, 1 d pk, 3 red, 2 l pk, 1 red, 1 d pk, 1 op, 1 l gr, 2 red, 1 white, 2 l pk, 3 red, 1 l pk, 4 op, 3 d pk, 3 l pk, 1 white, 1 red, 1 l pk, 1 l gr, 1 op, 1 l pk, 2 red, 1 white, 2 l pk, 1 d pk, 1 red, 1 d pk, 4 op, 2 d pk, 1 red, 1 l pk, 3 red, 2 l pk, 3 op, 3 l pk, 2 red, 3 d pk, 4 op, 1 l gr, 1 d gr, 1 d pk, 3 l pk, 1 l gr, 1 d gr, 3 op, 2 d gr, 1 l gr, 1 bl, 3 op, 2 d gr, 2 l gr, 7 op, 1 bl, 1 op, 1 l gr, 1 d gr, 2 op, 1 l gr, 1 op, 1 bl, 4 op, 2 d gr, 1 l gr, 2 op, 2 l gr, 2 d gr, 3 op, 1 bl, 4 op, 1 d gr, 1 l gr, 1 l pk, 2 d pk, 2 d gr, 2 l gr, 6 op, 3 l pk, 2 red, 1 d pk, 1 d gr, 2 op, 1 d pk, 1 red, 2 l pk, 3 red, 1 d pk, 5 op, 1 l pk, 3 red, 2 l pk, 1 white, 2 red, 2 l gr, 1 l pk, 1 red, 1 white, 3 l pk, 3 d pk, 2 op. Chain 12 plus 1 to turn.

The directions for stringing beads for Fig. 3 will make the design twice.

If one finds it very difficult to crochet the rows from left to right, the work may be turned around and the needle thrust through the stitch towards the worker, the loop of thread drawn back, a bead dropped at the front of the work and the last loop (through two) drawn back. This will give the same effect in the finished piece.

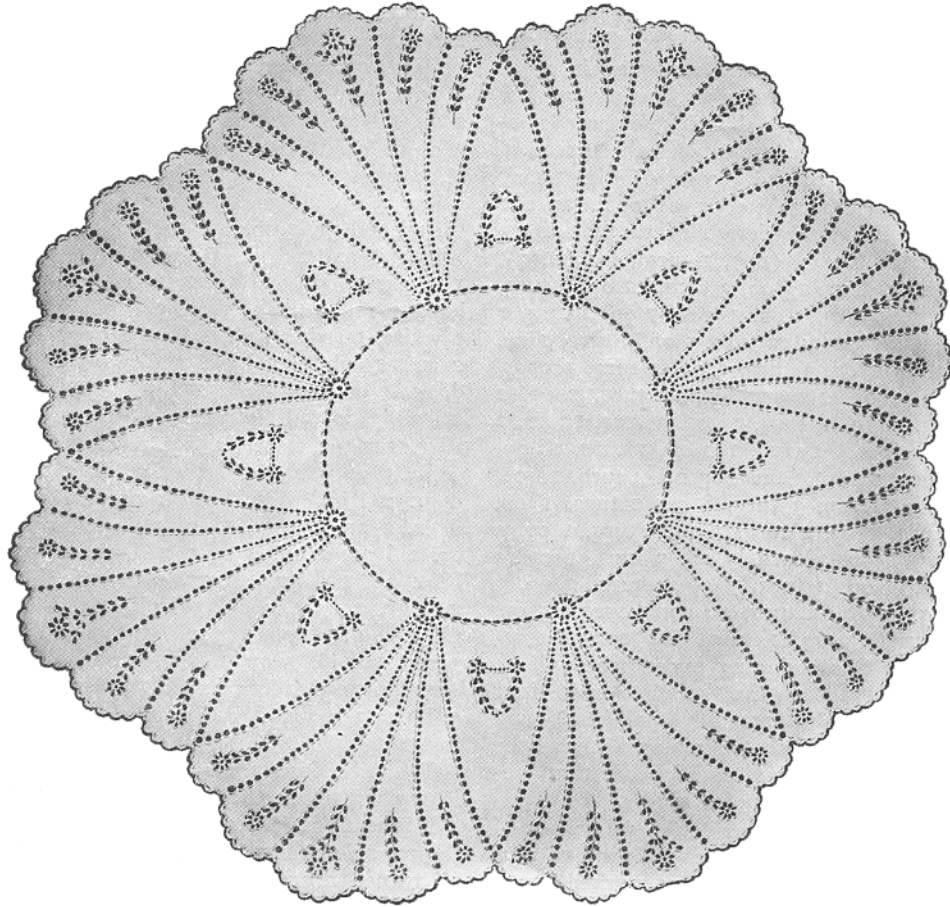
Fine beads used for making trimmings can be supplied for 6 cents a bunch. White or cream-colored silk, letter C, 12 cents a spool. Steel crochet-needle No. 14, 5 cents.

Dining-Room Embroideries

ON this page is shown a beautiful white linen luncheon-cloth, fifty-two inches in diameter. The entire piece is worked in eyelets, and when used on a dark wood table, the effect is most striking.

hardly noticeable. To make the work perfectly symmetrical, use a gauged stiletto, so the corresponding eyelets on each line will be exactly alike.

When making any eyelet, first run the



A FIFTY-TWO-INCH EYELET LUNCHEON CLOTH

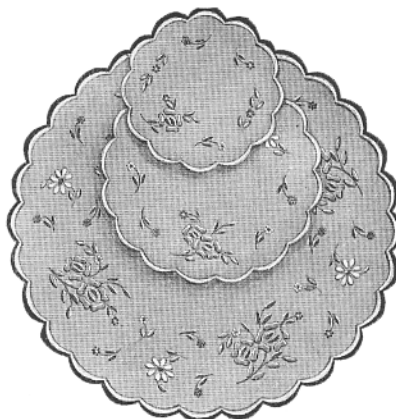
DESIGN No. 153-37. Stamped round thread linen, \$2.80; satin damask, \$3.50. Embroidery cotton, 63 cents extra. Perforated pattern, $\frac{1}{4}$ design, 35 cents; no transfer pattern. Stamping compound, with directions, 10 and 25 cents a box.

This is an especially good piece on which to display one's skill in eyelet-work, for several different sizes and shapes are used. Perhaps the most difficult are the radiating lines of graduated dots, the size of each successive dot varying so little as to be

stamped line with fine stitches, then go over it the second time, taking stitches over the spaces, to make a continuous line. Pierce the eyelet, turn back the material to the running-stitches, and cover all with close over-and-over stitches.

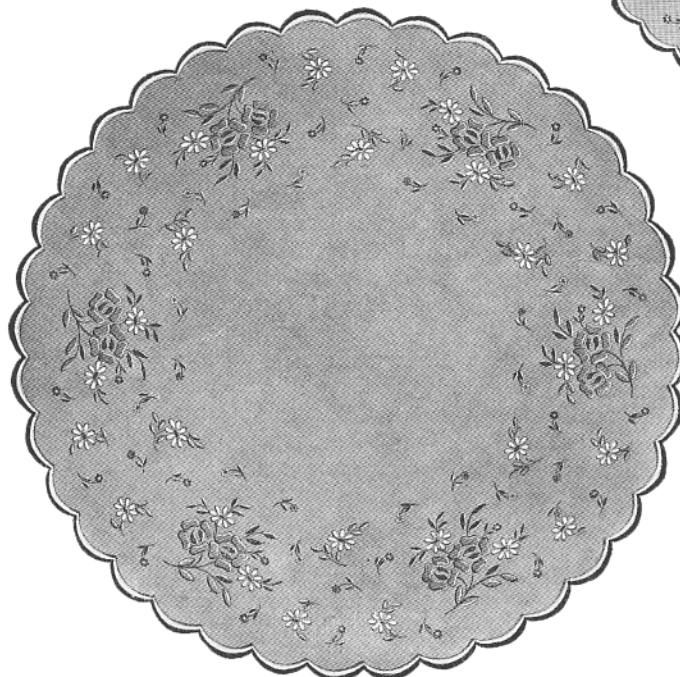
Nothing is more dainty and prettier than the Dresden set, which includes a twenty-two-inch centrepiece, five, seven, and twelve inch doilies, and a buffet-scarf eighteen by seventy inches. The pieces are stamped on a medium-weight, loosely woven material, and makes a most desirable breakfast or luncheon set.

The edges are finished with plain, even scallops, which are very suitable for this handsome design. Run both stamped lines with fine stitches and place padding-stitches between. The buttonholing is done in white, taking care



SMALL DOILIES TO MATCH CENTREPIECE

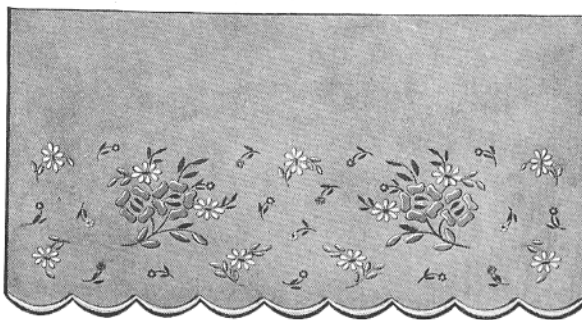
DESIGN No. 153-39. *Three sizes:* *Size, 12-inch.* Stamped linen, 30 cents each; \$1.70 for set of six. Embroidery cotton, for one doily, 24 cents extra; for six doilies, 32 cents extra; silk, for one doily, 50 cents extra, for six doilies, \$1.95 extra. Perforated pattern, 25 cents; transfer pattern, 10 cents. *Size, 7-inch.* Stamped linen, 20 cents each; \$1.10 for set of six. Embroidery cotton, for one doily, 21 cents extra, for six doilies, 41 cents extra; silk for one doily, 40 cents extra, for six doilies, \$1.00 extra. Perforated pattern, 15 cents; transfer pattern (6), 15 cents. *Size, 5-inch.* Stamped linen, 15 cents each; 80 cents for set of six. Embroidery cotton for one doily, 21 cents extra, for six doilies, 27 cents extra; silk, for one doily, 45 cents extra, for six doilies, 65 cents extra. Perforated pattern, 10 cents; transfer pattern (6), 10 cents.



CENTREPIECE IN DRESDEN DESIGN

DESIGN No. 153-38. *Size, 22-inch.* Stamped linen, 60 cents, or given for one subscription, other than your own, and 25 cents. Embroidery cotton, 50 cents extra, or silk, \$1.10 extra. Perforated pattern, 40 cents; transfer pattern, 15 cents. *A color scheme will be sent with each pattern of the design shown on this page.*

to keep the distinct point between the scallops. The roses are worked in two shades of pink, taking the stitches across the narrow way of the petals. Some of the daisies are worked in blue and some in pink, each having a yellow centre. Work each section solid. French knots are used for forget-me-nots.

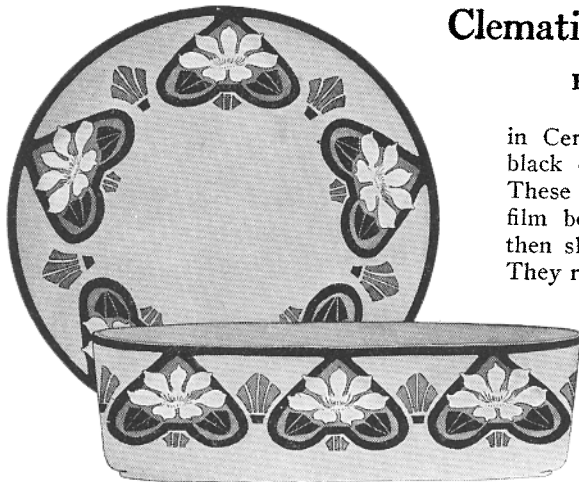


BUFFET SCARF MATCHING THE SET

DESIGN No. 153-40. *Size, 18 x 70 inches.* Stamped cream linen, \$1.10. Embroidery cotton, 33 cents extra, or silk, 85 cents extra. Perforated pattern, 30 cents; transfer pattern, 15 cents. *Work commenced, 75 cents additional.*

Clematis Design for Salad Set

By Gertrude S. Twichell



SALAD BOWL AND PLATES

DESIGN NO. 153-43 BOWL. Black outline pattern of design, with directions for applying, 25 cents.

DESIGN NO. 153-44 PLATE. Black outline pattern of design for one plate, with directions for applying, 25 cents; for set of six plates with directions, 90 cents.

NOTE.—With every 50-cent order a water-color study of the pattern will be sent.

THIS design is shown on a salad set, the larger motif being used on the salad bowl and plates, the smaller on the combination cracker and cheese dish.

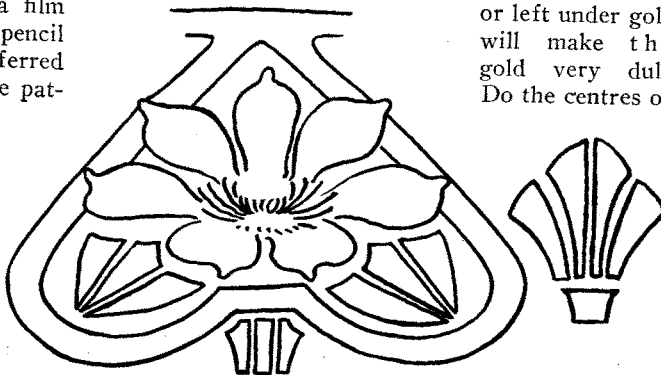
After having washed the china, wipe it over with denatured alcohol. Make a careful pencil tracing of the design, making the tracings on both sides of the paper. Use a common, soft lead-pencil. Space off the china, placing the motifs around so they will look well, and not too crowded. Hold the tracing in place on the china, and go carefully over the lines with a smoothly pointed stick or pencil. The alcohol leaves a film on the china, so these pencil marks will be easily transferred to the china. Go over the pattern again with the pencil, if the marks grow faint.

If one is not skilful in tracing and transferring, it will perhaps be easier to secure prepared outlines (prices for which are quoted under illustrations). These give the outline of the motif

in Ceramic black (they are prepared in black only) on films backed with paper. These are immersed in water until the film begins to separate from the paper, then slipped on to the china and fired in. They require no tracing or painting. Careful directions for their use accompany the films.

When the tracing is completed, mix up some moss-green and brown green. If powder colors are used, mix a little of the color with about two drops of balsam of copaiba. If tube colors are used, add turpentine. Dip brush in turpentine, work it into the moss-green. Paint in the ground back of flowers, with smooth strokes, getting the

paint as even as you can. Be careful not to work over the china too much, and thus rub off the pencil marks. Do not get any of the paint over the black bands, which are to be gold. The fan-shaped motifs, between the larger ones, are to be moss-green, also. When this color is all on, clean the brush thoroughly, then dip it in alcohol, wipe it on a paint-rag, and clean out every tiny speck of green from the flowers, bands, and leaf sections just under the flowers. Do this very carefully, as paint inside the petals will look badly, while color left under gold will make the gold very dull. Do the centres of



MOTIF USED ON SALAD BOWL AND PLATES

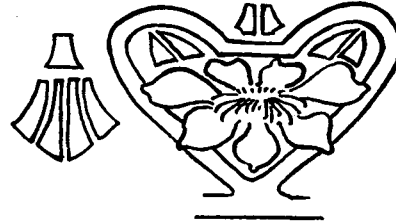
the flowers with little lines of either yellow or brown green. The leaf sections inside the medallions should be painted with brown green, after the moss-green has dried. If the paint is put on before the ground is dry, the colors will run, and spoil the work.

Be sure to get the edges on all the work very even and clean-cut, especially if you decide not to outline the design. If you wish to outline it in either dark green or black, put this outline on now, after the paint is dry, or wait until the second firing. Put the gold on the bands, which show black in the illustrations. Get these edges, also, very smooth and even. The gold will not need an outline. Clean off the stray brush and finger marks, and have the china fired.

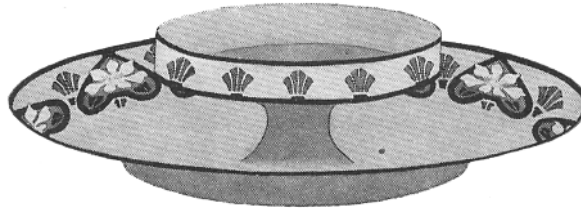
After firing, the first thing to do is to tint the china. Apple-green is used for this, or you may prefer to use cream. Mix up the paint, using more of the balsam than for ordinary painting. Lay the color on all over the china with a large brush. Then take the pad, made of wool or absorbent cotton wrapped in China silk, and quickly and

lightly pad over the entire surface. Pad this until absolutely smooth and even in tone. If the color is not even, do it over again. If there is not enough balsam in the paint, it will not pad well. Too much balsam will collect the dust, so it is best to test the tinting color first. When this is on satisfactorily, put the china away to dry in a warm place. When dry, clean out the paint from the petals, and from the gold. Do this very carefully and thoroughly. Do not allow the alcohol on the cleaning-out brush to run into the tinting. Then put a thin, even coat of ivory over the flowers, just enough to take off the dead white of the china. If the moss and brown greens look smooth and deep enough, leave the apple-green right on

them as it is. If they seem to need a second coat of color, clean out the apple-green, and go over them again with the other greens. When these colors are dry, put on the second coat of gold, taking ex-



MOTIF USED ON CRACKER AND CHEESE DISH



CRACKER AND CHEESE DISH

DESIGN No. 153-45. Black outline pattern of design, with directions for applying, 25 cents.

NOTE.—With every 50-cent order a water-color study of the pattern will be sent.

tra care not to go over the edges into the greens. If the design is to be outlined, put the outlining on after the tinting color is dry, and before putting the other greens on. Make firm, even lines, and be careful to keep the shapes right. Some painters prefer to do all the outlining the first thing, and have the china fired before doing any more of the work. When colors and gold are on, dry china, and it is ready for the last firing. After firing burnish gold with glass-brush.

The combination cheese and cracker dish is a nice one to have with the salad set, or it may be made up separately. The smaller motif is used on this piece, placing both parts of the design around the plate. The smaller part of the motif is used alone on the cheese-dish section, and the arrangement of this may be easily seen in the illustration. There is a narrow band of gold at both upper and lower edges of the cheese-dish. A quarter-inch band may be put on the inside of the salad bowl if desired.

This design could be used on a tall vase, by running eighth-inch gold bands down from the fan-shaped motif, to the bottom of the vase. The fan-shaped motif would be repeated around the bottom of vase.

A Beautiful Appliqué Design

By Sonja Danfelt

(See Cover)

THE character of this design is such that it may be used on either a sofa-pillow or table-runner or scarf.

The foundation is a tan Ramie linen, and the appliqué of a linen of much finer weave, the outlines being stamped on both materials, so there will be no difficulty in the application. The green, which is used for the leaves, is cut in one piece and basted in place. This part of the work should be done very carefully, keeping it perfectly flat on the foundation, and using a sort of overlapping-stitch on the edge, to prevent any possibility of fraying.

With stitches taken just over the edge of the colored linen, make long-and-short

stitches. Work very close, so the edges will be perfectly even and not show the linen. Although the leaves are cut all in one piece, the work is done so they appear quite distinct, taking the stitches in a way to form the separate leaves. The cover design will show very plainly how this is done, also the stitch direction and method of shading.

The tulips are also made in one motif, placing the embroidery stitches to form the petals. Pad the stems and work them solid.

The linen representing the jar is applied last, and is set on to the leaves just enough to cover the ends.

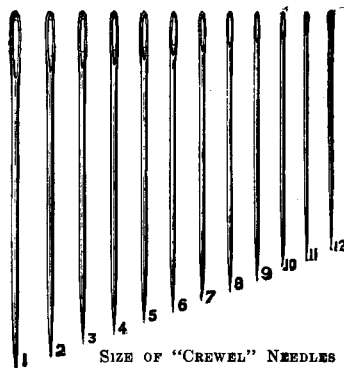
(FOR PRICES, SEE PAGE 43)

The Proper Needles for Embroidery

By an Expert Needleworker

While some may use the ordinary sewing needle, I believe the large majority of the best needleworkers prefer the long-eyed or "Crewel" needle, and this is the one recommended by nearly all the societies of Decorative Art in this country. Nos. 9 and 10 are the proper sizes for one thread of Filo Silk, which is to be embroidered into linen lawn, grass linen, or bolting cloth. For ready stamped linens use No. 8 or No. 9; for heavier linens use No. 8; and for butcher's linens, or fabrics mounted over linen, No. 7 will be required. No. 7 is the size for heavier work in two threads of Filo Silk. Per-

sian Floss and Etching Silk require a No. 8 needle, and for Roman Floss a No. 4 needle is needed. For Rope Silk choose a No. 22 Chenille needle. I consider



SIZE OF "CREWEL" NEEDLES

HARPER'S "Queen's Crewel"

needles the best, and I advise all needleworkers to obtain them if possible.

In Mountmellick Embroidery one should use the coarser sizes, No. 7 for Mountmellick Embroidery Silk, size FF, No.

6 for size F, No. 5 for size G, and No. 4 for size H. Be sure that you get HARPER'S "Queen's Crewel" needles, and accept no substitute.

Agents JOSEPH L. PORTER CO., Inc.

Sample paper 5c with 2c for postage.

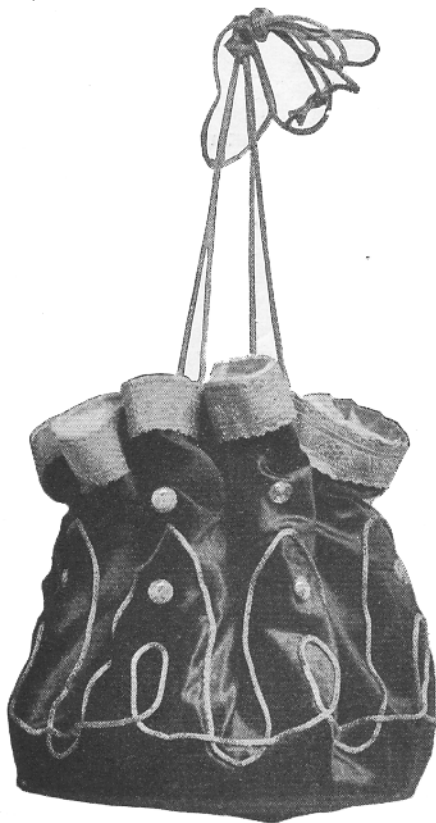
61-63 Leonard Street, New York

Registered in Washington, U. S. A., No. 67,702.

A Pretty Work Bag

THIS work-bag is made from a perfectly round piece of material, a round piece of cardboard being sewed in the bottom, so it will keep its shape, and be more practical for use.

For a wash material, linen in either blue, pink, white, tan, or lavender would be very handsome. The large dots are padded and worked solid, while the scroll lines are braided, soutache braid being very suitable for the purpose. When sew-



BAG OF COLORED LINEN

DESIGN No. 153-48. Stamped white, blue, pink, tan, or lavender linen, 40 cents, or given for one subscription, other than your own, and 5 cents. Mercerized soutache braid, white, red, brown, or écreu, and cotton for working, 18 cents extra, or silk braid, white, black, red, or écreu, and silk for working, 25 cents extra. Embroidery cotton, white, or any preferred color, for chain-stitching, 12 cents extra, or silk, 15 cents extra. Perforated pattern, 20 cents; transfer pattern, 10 cents.

ing this on, take the stitches right through the braid, taking a very tiny stitch on top and a longer one beneath. Chain stitches might be used very effectively in place of the braid.

[CONCLUDED ON PAGE 36]

CHARTER OAK PRODUCTS

"ALWAYS RELIABLE"

Charter Oak Crochet Cord

At Your Dealers, 10 Cents

Or send us five 2-cent stamps for sample ball. Three balls for 25 cents. Full box, 12 balls, all one color or assorted as you like. 84 cents prepaid to your home. **TAKE NO SUBSTITUTION.** Nothing can excel **CHARTER OAK** for making Bed Spreads, Sofa Pillows, Coverings for tables, **CROCHETED BREAKFAST MATS.**



MADE IN 22 COLORS

White, Unbleached, Cream, Ecreu, Dk. Ecreu, Linen, Lt. Pink, Lt. Blue, Alice Blue, Navy Blue, Scarlet, Cardinal, Yellow, Orange, Heliotrope, Nile Green, Fern Green, Md. Olive, Emerald, Dark Green, Royal Purple, and Fast Black. Send 2c stamp for sample card.

CHARTER OAK CARPET WARP

7 to 8 oz. tubes. Colors, White, Unbleached, Ecreu and Cream. Price 25 cents per tube and 5 cents extra to part pay postage. On an order for 10 tubes we prepay express or parcel post charges.

CHARTER OAK CROCHET TWIST

100-YARD BALLS FULL MEASURE

Especially adapted for crocheting useful and artistic **HOUSEHOLD DECORATIONS.** Made in 8 colors, White, Unbleached, Cream, Dk. Ecreu, Linen, Lt. Pink, Lt. Blue, Dk. Green.



AT YOUR DEALERS, 5 CENTS

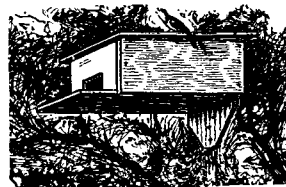
Or send us nickel and 2-cent stamp for sample ball. Four balls for 24 cents, coin or stamps. Ten balls for 50c. Full box 16 balls, all one color or assorted, 72 cents prepaid to your home. Much cheaper this way. Send 2c. stamp for sample card.

W. H. BULLARD THREAD CO.

Manufacturers of Charter Oak Products

DEPT. E. HOLYOKE, MASS.

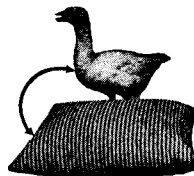
Boys let us help you Build this Bird House



THE S. S. SCRANTON CO., 77 Trumbull St., Hartford, Conn.

Any boy can make this splendid bird house from Bryant's complete Manual Training working plans and specifications. Also Yacht, Magic Disc, Hat Rack, Tie Rack, Tabouret and 39 other designs. Send 10c for any one complete working plan with illustrations and complete list or \$1.00 for entire set of 45 packed in handsome folio.

Valuable Down Cushion FREE



It's made of finest quality white goose down. You get it FREE with each pair of our genuine Southern live goose feather pillows. After 60 days' use, if you feel their luxuriously restful, health giving comfort isn't a necessity and worth double their cost we take them back, paying all postage. You'll enjoy our interesting folder illustrating nine grades of beautiful pillows. Just a line will bring it by return mail.

LIVE GOOSE FEATHER CO., Dept. D., Statesville, N. C.

Wedding

Invitations, Announcements, etc. 100 in script lettering, including two sets of envelopes, \$2.50. Write for samples. 100 Visiting Cards, 50c.

H. OTT ENGRAVING CO., 1088 Chestnut St., Philadelphia, Pa.

Please mention Home Needlework when writing advertisers

UTOPIA NEIGE

THE IDEAL EMBROIDERY FLOSS for Dresses, Blouses, Underwear, Hosiery and all ART EMBROIDERIES



The thought and effort that you put into a garment warrants the utmost care in selecting a material that will produce a satisfactory and lasting result. The standard of UTOPIA NEIGE remains unequaled—it invites comparison.

UTOPIA NEIGE is made of the finest mercerized Cotton. Bright as silk. Put up in balls. White and all colors.

All Art Needlework Depts. and Stores Keep it.

FASHION DRAWING PAYS

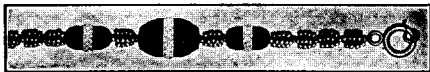


The demand for qualified Fashion Artists exceeds the supply. Bigger opportunities are offered than ever before. Instruction in this simple and profitable branch of drawing can be easily acquired.

IN YOUR OWN HOME without loss of employment. Our course in Fashion illustrating was prepared in collaboration with the largest firm of Fashion Artists in America, which is a guarantee that our course is complete and Practical.

Free! Send a postal request for our new year book. It fully explains our home instruction plan for Fashion illustrating.

SCHOOL OF APPLIED ART
DEPT. 21 APPLIED ART BLDG.
BATTLE CREEK, MICH.



Have you had directions for making the very latest novelties, the new 3-Piece Torpedo Olive

Coat, Fan & Purse Chain

for 1915, also the much improved **LATTICE CHANGE PURSE?** A stamp sent to our address will bring them to you at once with other interesting matter about beads.

ISAAC D. ALLEN CO.
21 Winter Street Boston, Mass.
"The Bead Store of the Whole United States"



CALLING CARDS

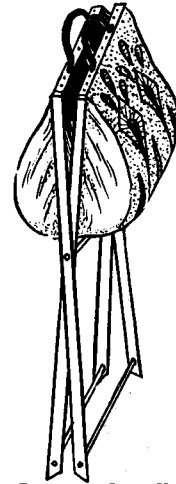
very latest styles, 50 cents for 100. 35 cents for 50. Samples free. **CARD SPECIALTY CO., D-2, 62 Hartford St., Newark, N. J.**

Combined Sewing Bag and Stand

By A. E. Swoyer

THE sewing or darning bag is a necessity in every well-ordered household, but to be used without the necessity for continual stooping it must be placed upon a table, and when not in use it must be hung up. A compromise is suggested, however, in the sewing-bag stand illustrated herewith. This device carries its own legs with it, so that a table is unnecessary; it is held open when erected, so that its contents are instantly available without the customary grab-bag performance; it may be placed close to the left elbow of the seamstress, and is of such a height as to be most convenient.

The dimensions and material given are for a bag one foot square and one foot deep, arranged to stand when opened at a height of two feet from the floor. The wood for the frame consists of four strips for legs, each twenty-seven inches long, one inch wide, and one-half inch thick; two more strips of the same width and thickness, but only twelve inches long, for the top cross braces, and three round bars one-fourth inch in diameter and thirteen inches long for the remaining braces. The bag itself may be made of any suitable material, properly stenciled or embroidered.



READY TO PICK UP

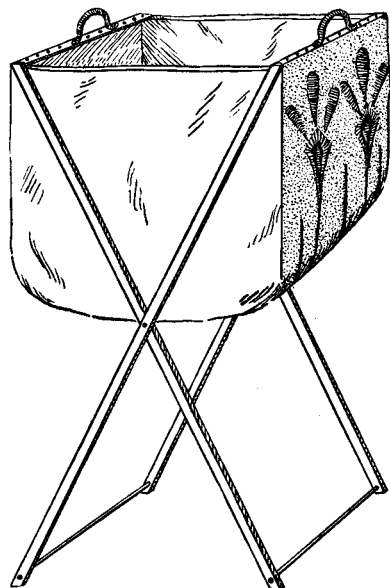
To build the frame, bore one-fourth-inch holes through the centres of each leg, as well as one-inch from one end; drive the ends of the round cross braces into these, and you will have a "saw-horse" frame. To tighten them in place, insert a small screw in the ends of the two lower braces; the centre bar must be left loose, as the frame revolves upon it when folded. Next, nail or screw the flat top cross pieces in place, and the frame is ready for finishing.

The color of the frame will depend upon the material of which the bag is made. Sandpaper the wood smooth and

Form the habit of reading the advertisements. It pays

apply stain of the proper shade, finishing with a coat of varnish, or of wax, well rubbed in.

Directions for making the bag are scarcely necessary; it should, however, be reenforced with tape at all edges; interior pockets may be added as your fancy dictates. The bag is fastened to the frame by tacking to the top cross bars, small brass-headed nails make a neat appearance. This done, add a handle, of cloth or of leather, to each of the cross bars as shown, and your bag-stand is complete.



No. 153-49. SEWING BAG AND STAND

Design and outline for cutting stamped on écreu Bulgarian linen, 90 cents; on gray Art linen, 70 cents. Cotton for working, 18 cents extra. Perforated stamping pattern, 30 cents. A color scheme will be sent with each pattern. Work commenced, 75 cents additional.

If you wish the larger bag, and object to the awkwardness of running the rod through it, the latter may be eliminated entirely; the hinge is then formed by running a one-quarter-inch bolt one inch long through each pair of legs at the centre holes, and being careful not to screw the nuts too tight.

Écreu Bulgarian linen is a good material to use for the bag itself, and this one has a conventional design on it embroidered with a twisted embroidery cotton in two shades of blue and yellow. The illustration shows the direction of the stitches in this embroidery, and a color diagram, which is supplied with the pattern, tells where to place each color.

Bust and Hips

Every woman who attempts to make a dress or shirt waist immediately discovers how difficult it is to obtain a good fit by the usual "trying-on-method," with herself for the model and a looking-glass with which to see how it fits at the back.

Hall-Borchert Adjustable Forms

do away with all discomforts and disappointments in fitting, and render the work of dressmaking at once easy and satisfactory.

These forms are not limited to a few sizes and shapes.

They are the only forms on the market which can be separately adjusted in each and every part, so as to exactly duplicate any figure.

Each section of the neck, shoulders, bust, waist, hips, skirt, etc., may be regulated independently and set to whatever lines and proportions are desired without affecting any other part of the form.

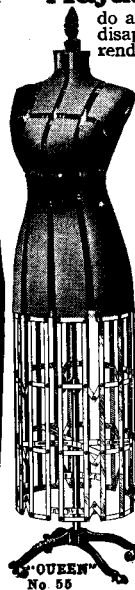
Very easily adjusted, cannot get out of order, and will last a lifetime.

Write for Illustrated Booklet containing complete line of Dress Forms with prices.

Hall-Borchert Dress Form Co., Dept. 10, 30 W. 32d St. NEW YORK

Dept. 10, 163-171 N. May St., CHICAGO

Dept. 10, 144 Tremont St., Boston



10c Offer—KEITH'S Magazine



To introduce Keith's, the recognized authoritative magazine on Home Building, a big 80-page number and a copy of book,

20 Plans

Both for 10c. They are Wonder Homes for artistic design and practical planning. Send silver or stamps.

M. L. Keith, 746 McKnight Bldg., Minneapolis, Minn.



Beautiful Table Set

This pretty violet centerpiece and four doilies to match, all stamped on jersey art linen, and our fancy work catalogue mailed 10c prepaid for one dime.

Trussell Imptg. Co., Lowell, Mass.

Y ARNS SPANGLES & EMB. MATERIALS. BEADS FOR BAGS AND CHAINS, Canvas, Gold Threads, Cross Stitch Materials, Tapestry Silks and Wools, Lace Braids. JEWELS. EVERYTHING YOU CAN THINK OF IN THIS LINE that can't be had elsewhere. Send stamps for small list. Est. 1860. PETER BENDER, IMPORTER, 111 E. 9th ST., N. Y. WHOLESALE & RETAIL

We guarantee honest treatment from our advertisers



Only \$25

for this Brass Bed with Silver Link Springs and Fluff Felt Mattress. Saves you \$10 to \$15 Easily.

We Sell Only

Direct From Our Factory To You

LUXURY

Brass and Iron Beds, Springs, Mattresses, Pillows

At Wholesale Prices with Guarantee of Satisfaction or Money Back.

Freight paid on \$5 order, as far as Mississippi or Carolina

If you would enjoy a really good sleep; if you would make your beds the joy of your family and the envy of your guests at an unbelievably reasonable price, write at once for our

FREE LUXURY SLEEP BOOK

It describes our line; includes free samples—shows 30% to 50% saving for you.

OAK MANUFACTURING CO., 130 Mill St., Rochester, N. Y.

A \$20 Mattress For \$10

A \$15 Double Coil Spring For \$7

SUPPORT YOUR ABDOMEN

comfortably and healthfully by wearing the Herrick Corset. Our patented light "Inner-Lift" belt gives great relief to all women—large and small—needing natural abdominal support. Doctors endorse it for wearing after operations or for any abdominal trouble. Ask your own doctor about it. The **HERRICK CORSET** also really reduces the stout figure, gives style and greater comfort than any average corset. Made of firm, snow-white coutil with six bone supporters. Fashionable models: Style "B" (medium low bust), Style "C" (medium high bust). Give style and size when ordering.

Sizes 18 to 30. Price \$5.00
 Sizes 31 to 36. Price \$6.00

We pay parcel post. Money refunded immediately if you're not satisfied. Remit by money order *today*. Write for booklet.

HERRICK CORSET CO.
 7180 Grant Pk. Bldg., CHICAGO

Lattice Tango Hand Bag

This is another of our successful novelties—can be made in several colors to harmonize with your gown. Send stamp for complete directions for making. You should be able to earn a lot of "pin money" making them up to sell in your own locality. Make one and see if we are not correct.

All the material needed, complete, includes best quality Genuine German Silver Bag Top 6 in. wide to sew on) Price made up, ready to wear - - 9.00

ISAAC D. ALLEN CO., 21 Winter Street, Boston, Mass.

"The Bead Store of the Whole United States"



EMMA LOUISE ART SHOP

Write for 1915 Catalogue FREE

The most complete Catalogue of Art Needlework and Novelties published.

EMMA LOUISE ART SHOP, Dept. 117, BELMAR, N. J.

Marking Family Towels

By Laura W. Lake

FOR the convenience of a large family, all the huckaback towels should be marked individually, a most suitable way for doing this being to work the name in cross-stitch on the hem of each.

The letters should be quite plain and about an inch in height, or smaller, if one prefers. Use a different color of cotton for each member of the family, such as "Father" in red, "Mother" in lavender, "Dorothy" in blue, etc.

Some special color scheme is usually carried out in the guest-room, and this same color of cotton should be used in working "guest" on the towels.

This aids greatly in keeping them in good condition, and assuring a good supply for this room.

Toweling may be bought by the piece, cut in suitable lengths, and finished with a neat hem. A double hemstitch is always desirable, as the threads are kept in place so much better when laundering. These towels, when marked as described above, are most attractive. Some may prefer using one color of cotton, especially if the towels are to be hung on the rack together in the bathroom. This idea is just as practical, as long as the names are worked on.

Bath towels may be marked in the same way, working the name through the plain border on the end. This not only assures individual use, but also their safe return when used by boys at swimming-tanks, etc.

A PRETTY WORK BAG

[CONCLUDED FROM PAGE 33]

For a more elaborate bag, one might obtain the perforated pattern and stamp the design on silk. In this case, the dots should be embroidered in silk, and a fancy braid used for the scroll lines. This can either be gilt or of a color matching the silk. The top of the bag is finished with a fancy band, which comes well over the outside and serves as a facing on the inside. Instead of a casing, rings are sewed around the inside, and the draw-strings or ribbons are run through these.

Bags of this character are also pretty made of fancy silk, made up plain, without the embroidery design.

Go shopping in our advertising columns



GIVEN TO YOU Without Extra Charge

This useful Mission Rocker would cost you \$8 or \$10 at retail. We give it to you with a \$10 purchase of foods, soaps, toilet preparations and other household supplies (choicest quality, fresh, pure) direct from us, the manufacturers. If you don't need a Rocker there are 1700 other high-grade articles you can obtain the same way—furniture of all kinds, carpets, rugs, stylish new lingerie dresses, coats and others.

Big Catalog FREE

Send for it today. It describes our hundreds of money-saving offers in full. Shows how you can furnish your home and clothe yourself without any expense whatever, just by buying needed household supplies direct from us instead of at the store.



Send Coupon at Once

Fill out this coupon and mail it to our nearest address today, or write a postal mentioning this magazine. Over two million people profit by using our Catalog and you will profit too. Send the coupon and see!

Larkin Co. BUFFALO, N. Y. CHICAGO
PEORIA, ILL.

Send me, postage prepaid, your Big Catalog No. 64

NAME

ADDRESS

G. P. 264

Your Foot Comfort is guaranteed in **EZ WEAR Shoes \$3**



We guarantee to fit your feet perfectly; if we fail or for any reason you are not satisfied, we will refund your money.

Simon's EZ WEAR Shoes
For Men, Women, Children

Scientifically made of soft, pliable vic kid or *Simoni's Special Eswear* leather, requiring no breaking in. Have flexible soles, steel arch supports and new live rubber heels and are outlow to tip; unlined, no linings to wrinkle and hurt the feet, and laced to conform to shape of your foot.

Style, Service and Comfort Guaranteed

CATALOG of 495 EZWEAR Shoe Styles and measurement blanks. Write today. **IT'S FREE**

THE V. SIMON SHOE, 1589 Broadway, Brooklyn, N. Y.

7 Piece Bureau Set 15c.



An Elegant Bureau Set of 7 Pieces in Eyelet Embroidery, consisting of 6 Doilies and a large 18 inch Traycloth to match, all on Fine Quality, Round, Thread, Natural Bleached Art Linen, only 15c. Book of latest embroidery designs, containing other Bargains free with order.

JOS. C. SAUTER, Box 246, Poughkeepsie, N. Y.

Landscape Drawing with Crayons

Planned by a teacher of experience for Beginners, Children or Grown-ups. Starts with the simplest sketches and leads to more advanced work. Not outlines to fill in, but teaches how to draw from Nature. Price 20c. With box of 8 crayons and 20 sheets of drawing paper, 40c.

THE ARTCRAFT SHOP, Box 58, Roxbury, Mass.

Send Us Your Old Carpets We Dye Them and Weave Velvety Rugs



Beautiful new rugs in plain, fancy or Oriental patterns—any color you want, any size—totally different and far superior to other rugs woven from old carpets.

Rugs, \$1.00 and Up

Reversible, seamless, soft, bright, durable rugs, guaranteed to wear 10 years. Money back if not satisfied. Every order completed in three days.

You Save 1-2

Your old carpets are worth money, no matter how badly worn.

FREE Write for book of designs in color, our liberal freight payment offer and full information.

OLSON RUG CO.
Dept. K-49 40 Laflin St., Chicago, Ill.

Do You Need a New Pair of Scissors?

Eight-inch shears, good quality, 75c a pair.
Six-inch Sewing Scissors, excellent quality, 60c a pair; four-inch size, 50c a pair.

"Stork" Embroidery Scissors, 3½-inch, 4-inch, and 4½-inch. 60c a pair.

Embroidery Scissors, with handles of German silver, blades of finely tempered steel. 50c a pair.

Send your order to
Home Needlework Magazine
Southgate Bldg., Boston, Mass.

Shop by mail. Our advertisers are reliable

I Am Making a Special Low Factory Price on 10,000 *Rapid* Fireless Cookers



JUST now I am making a special price proposition on 10,000 Fireless Cookers to introduce them quickly into new homes. My Rapid Fireless Cooker actually reduces the cost of living. It saves you a big per cent of your fuel bill, saves you work and worry, and cooks all kinds of foods better. It makes them more digestible and more delicious. All the flavor of the food remains in the food after it is cooked.

30 Days' Trial
In Your Home on My Personal Money Back Guaranty

I want you to use the Rapid Fireless Cooker this way for 30 days. Then I want you to take a vote of the entire family and yourself—and if you don't decide that the



Aluminum Lined Throughout. Full Equipment "Wear-Ever" Aluminum Cooking Utensils
Fireless Cooker

is a marvel—if the whole family don't say that they never had better meals, more wholesomely cooked, and if you don't say that you did it with far less work than you ever did before—then I want you to send it back—I will refund your money without argument.

Send for Big Free Book

Contains 150 recipes by famous chefs showing how, with the Rapid, you can cook or prepare every dish you serve on your table. Write today. A postal will do.

Wm. Campbell, Pres.

The Wm. Campbell Co., Dept. 180, Detroit, Mich.

FASCINATING CROCHET DESIGNS



For beginner or expert. Hundreds of clear, beautiful designs, by Sophie T. LaCroix, in the following books:
 No. 1.—Crochet Designs, vol. 1. No. 4.—Tattling and Braids.
 No. 2.—Crochet Designs, vol. 2. No. 5.—100 Xmas Novelties.
 No. 3.—Bed Spreads. Include newest, scarcest, prettiest, oldest patterns with instructions. No. 6.—Smoking for Shirtwaists, Baby's Wear, Bags, etc., with instructions. Any Book postpaid 25c. silver or 26c. stamps. Address, ST. LOUIS FANCYWORK CO., Block 6, St. Louis, Mo.



THE EAGER INTERNAL BATH

(a Syringe Operated by weight of Body) relieves Constipation without Drugs by Cleaning the Intestines, restores digestion and ambition, gives appetite for food, quiets the Nerves, induces natural sleep, refreshes the complexion, invigorates, allays fever, quiets the mind, cures headaches. A necessity in every home. Complete outfit \$6.00; our combination, fitting all standard rubber bags, \$3.50. Send 2-cent stamp to Dept. H. N. for illustrated booklet.

EAGER COLON CLEANSER CO.
 737 Washington Ave. Brooklyn, N. Y.

BEADS

Beautiful colors, good variety, low prices. For necklaces, coat chains, fobs and novelties. Design sheet and price list FREE.

N. E. JOHNS, 144 Perin Bldg., Cincinnati, Ohio.

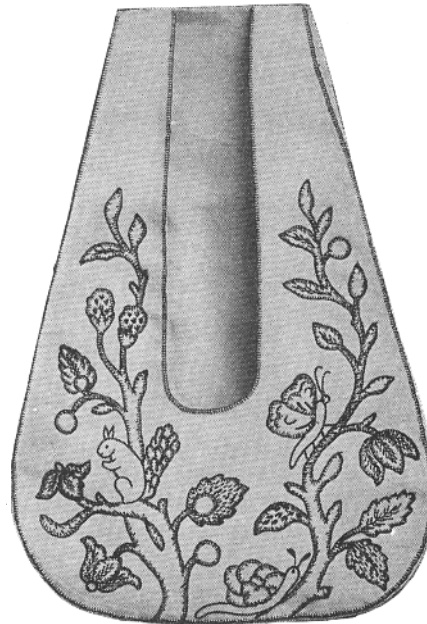
YOUR INITIAL—FREE!

Beautiful perforated old English letter (3 inches) also 1915 catalogue of stamping patterns, art needle-work supplies, household novelties, jewelry, sanitary goods, etc. All FREE—(send 2c stamp for postage).
 C. E. VERGES, 849 Richmond St., Cincinnati, O.

A Convenient Laundry Bag

THIS attractive laundry-bag can be made of either white or tan linen, and is very easily worked, as the entire design is in one color. Only the simplest stitches are used, the greater part of the work being done in buttonhole and long-and-short stitch, as shown from the illustration. Through the centre of the leaves is a row of feather-stitching, while the squirrel is worked in simple outline-stitch. The large leaf in the centre is filled with seed-stitches, which are merely a succession of short running-stitches, the stitches of one row coming opposite the spaces of the previous row.

The bag is made in two pieces, top and back, the edges being joined by a row of buttonholing made through both thicknesses. Through the centre of the front



LAUNDRY BAG OF WHITE OR TAN LINEN

DESIGN No. 153-50. Stamped white or tan linen, 60 cents, or given for one subscription, other than your own, and 25 cents. Embroidery cotton, white, or any desired color, 12 cents extra, or silk, 40 cents extra. Perforated pattern, 25 cents; transfer pattern, 10 cents.
 Work commenced, 75 cents additional.

a piece is cut out, and this edge is also finished with buttonholing. This forms the opening, which for a laundry-bag is much more convenient than draw-strings at the top. When choosing a color for working, it should depend somewhat upon the color scheme of the room.

Advertising offers money-saving opportunities

The
Wing
Upright Pianos,
Player-Pianos
and Grands



The
Wing
The Piano
of
Excellence

One of our 38 styles

Superb Wing Shipped on 4 Weeks' Free Trial

YES, we'll ship to you on 4 weeks' absolutely free trial a Genuine highest grade Wing piano **DIRECT** from our own factory, *freight prepaid*. The most surprising—most amazing offer ever made. An offer that puts you on the same footing as the largest piano dealer—and at the very **rock-bottom DIRECT** wholesale factory price! Since 1868—for 47 years—we have been building Wing Pianos, renowned everywhere for their sweetness of tone and sterling merit—and we now make you the greatest of all offers on the Wing, guaranteed for 40 years.

We will allow you to use *any* Wing piano—your own choice of 38 superb new styles in any shade of mahogany, walnut or oak—in your own home for four full weeks at our expense. A Wing Upright, a Wing Grand or a wonderful Wing Player-Piano that plays all the greatest concert and opera selections (you can play it perfectly the first day without taking music lessons)

No Money Down—Not a Cent of Freight

We ask no money down—no security—no deposit in your bank—no obligations. Just choose any Wing from our large catalog. We employ no salesmen of any kind to visit and annoy you. We'll ship the instrument, no money down—*freight prepaid*. While the piano is in your home use it just as if you owned it. Compare with description in the Wing catalog—but note the *rock-bottom direct-wholesale-factory price* is quoted in the personal letter to you. Play the piano—let your friends play it. Examine it carefully—thoroughly—inside and outside. Take music lessons on it if you like. Note the perfect bell-like tone, the remarkable easy regularity of the action, the deep resonance of the base, the timbre of the treble—note all this—then—

At the end of the 4 weeks trial, if you wish, you may return the piano at our expense. We pay return freight to New York. Not a penny to pay for the pleasure of using the piano four weeks. *No obligations whatever* to keep it—you and you alone to judge—Now write for the piano book (free).

Five Instrumental Effects

combined in the **Wing**, free, if you wish. No extra charge for our wonderful patented device that reproduces the sweet singing music of the Tyrolean zither, harp, guitar, banjo or mandolin. You can have the effect of an entire parlor orchestra at your command.

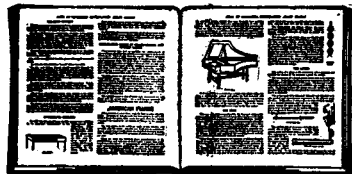
Famous Noteaccord Free

An invention by which you can teach yourself to play—given with every **Wing**. It's like getting music lessons free. Endorsed by: Paderewski, Jean De Reszke, William Mason, Emma Calve, Phillip Sousa, Antoo Seidl, Victor Herbert, S. B. Mills. See the Wing Catalog and read the letters of these great masters of music.

Stool and Scarf is Given

with every **Wing** piano. A handsome stool of newest design to match the piano you select. Also beautiful Brocatel Drapery, French Velour Drapery, China Silk Scarf, Japanese Silk Scarf or Satin Damask Scarf as you prefer.

Valuable Book on Pianos—FREE! "The Book of Complete Information About Pianos"



The New York World says: "This is a book of educational interest everyone should own." Would you like to know all about pianos—how they are made, how to judge the fine points of quality and price in buying a piano? Then send the coupon for the piano book which we are sending out FREE for the present. This book of 136 pages tells about materials, manufacture, assembling, patented devices and what they do, all about soundboard, action, case, in fact every detail connected with the production of a fine, high-grade piano. You will be astonished at the amount of information about piano quality and piano prices, and how to answer the arguments of piano salesmen. This is a magnificent 136-page book, a complete encyclopedia on the piano; the most complete and costly book ever published on the piano business; posts you on the making of a piano from start to finish and how to judge the fine points of a piano. Now, then send the coupon. We will send you this book free and prepaid, provided you send the coupon at once. We will also send free our beautiful catalog showing new art styles and full explanation of our rock-bottom price on the Wing Piano. Just drop a postal or mail coupon today. **WRITE NOW!**

Piano
Book Coupon

Wing & Son

Est. 1868. Wing Bldg.
9th Ave. & 13th St. Dept. 2193 New York

WING & SON (Est. 1868)
Dept. 2193, Wing Bldg., 9th Ave. and 13th St. NEW YORK, N. Y.

We will take your old organ or piano on the most liberal of all offers. Be sure to get our proposition before you sell or trade your old instrument. Do not overlook this opportunity.

Name.....

Address.....



Do You Crochet?

It is easy to crochet such pretty things as purses, scarfs, collars, boudoir caps, work bags, edges for towels, wash cloths and handkerchiefs, slippers, sweaters and cute nut baskets.

You can beautify your home and delight your friends with valuable gifts crocheted with your own hands. The cost is small. All you need is a few balls of Princess Pearl Crochet Cotton, or C. M. C. Cordonnet. Our instruction sheets tell you how to make every stitch; beginners can start and be sure to succeed.

Princess Pearl Crochet is a full size lofty, smooth and lustrous thread, just the right size for crocheting bags, belts, collars and slippers. 20 beautiful colors put up in big balls. Two sizes: size 3 coarse and size 5 fine. Price, 25c a ball. Ask your dealer for "Princess."

C. M. C. Cordonnet is the only Cordonnet Cotton with the perfect "Cable laid" twist. Articles crocheted with it keep their shape and wear beautifully. Made in all sizes in Snow White and Ecu. Sold by dry goods stores.

Send 6c for **Fancy Work Book**, including rules for crocheting many pretty articles, bags, purses, slippers, ladies' sweaters, scarfs, luncheon sets, etc. Ask also for the new **Instruction Sheets**. For Color Card showing all shades made in Princess Pearl send 10c extra.

CORTICELLI SILK MILLS, 73 Nonotuck St., Florence, Mass.



Full Size

CRYSTAL HEART

Diamond cut, very brilliant stones, imitation AMETHYST, TOPAZ, SAPPHIRE, RUBY, GARNET, EMERALD. Mounted with GOLD FILLED loop. 15-inch gold filled neck chain, guaranteed, 75c. Heart and chain, \$1.00. This beautiful PINK SAPPHIRE GEM, mounted in solid gold setting \$3.50. Gem guaranteed forever. Most durable as well as most beautiful ring ever sold for the price. Money returned on either article if not satisfactory. Booklet free, full description.

\$3.50

35c

The Alden Co., Dept. C, 389 Monroe Ave., Rochester, N. Y.

Cards for Handcoloring

200 new designs in St. Patrick and Easter cards and folders. Dainty cards for all occasions. Dinner and Tally cards. Unusual and inexpensive gifts. Send for our illustrated catalogue "Pleasant Pages" — FREE. High class engraving.

LITTLE ART SHOP, 1425 F St., N. W. Washington, D. C.



\$3.25
Postpaid

LADIES! EASE YOUR FEET

Send postal for free catalog telling all about our Neat, Noiseless, Flexible, Comfortable unlined Vic Kid O'Sullivanized PILLLOW SHOE. New shoes easy as old ones. No breaking in required. Fit and feel like a kid glove. All styles. Customers everywhere. Trade-Mark Registered.

PILLLOW SHOE CO., Dept. B,
184 Summer Street BOSTON, MASS.

WRITE DAINY LACES FOR TODAY SAMPLES

Of our laces and beadings for your spring and summer sewing, Torchon, Valenciennes, Maltese, Oriental, etc. Also pretty little edges and insertions for infants' wear. Please enclose two-cent stamp to help pay postage. 20th CENTURY LACE CO., DEPT. E, DECATUR, ILL.

BREAKFAST APRON

of White Lawn trimmed with Lace and Ribbon, 15c.
N. GARRISON, The Pines, ORLEANS, MASS.

A Novel Bassinet

By Mrs. Sidney Erickson

A MOST beautiful bassinet, equal to those selling in the store from \$30 to \$40, can be made for the small sum of \$5, and possibly less. The materials needed may be bought at any department store, and include, one camp stool at 29 cents, one 10-cent can baby blue enamel, one slat clothes basket at 75 cents, six yards of pale blue cambric at 6 cents per yard, two yards of the net at 50 cents per yard, six yards of beading with an edge at 5 cents per yard, also eight yards of lace edging (to match if possible), this also at 5 cents per yard. The lace edging must be sewed to the beading, holding it a little full as you do so. Then get about eight yards of narrow blue ribbon, and also about four yards of wider ribbon, three sheets of sheet wadding, and last of all, a box of tacks. Enamel the legs of the stool with the blue, and when dry secure your basket to the stool with four screws in the bottom where the basket is solid. Then get three barrel-hoops, these cut down, one a little over half, the next about half, and the third just large enough to miss the handle of the basket. Make them much narrower, to within about four inches from the end of the hoop; that is, whittle them down, then fasten them to the sides of the basket and you have your hood ready for covering.

Put one sheet of the wadding over the bottom of the basket, cut your blue cambric long enough to come three or four inches below the basket and quite a ways down into it. Full it on and simply use the tacks to do so, then put your lace beading on to the edge of the net which you are going to put over the blue, and fasten the net over the cambric. Cover your hood with the blue and gather your net at each hoop. Your hood is covered, so now you sew the lace beading around the top edge of the basket (it makes it very much easier if you run your narrow ribbon through the beading before sewing it on). Sew the beading over each of the hoops, and with what narrow ribbon there is left, small bows or rosettes can be made and put at each end of the first hoop. Take a piece of the wider ribbon and wind each handle, then with the wide ribbon make a real large bow, and this place on the

Advertisers make the world your market place

hood, tacking each end firmly. If there is any of the wide ribbon left, a smaller bow can be placed on the handle farthest away from the hood. Should you care to put a little more expense on the basket, you can get four ball-bearing casters, or four small rubber wheels, thus making it most convenient to move anywhere in the house.

A beautiful bassinet like this appeals to every mother, for they are so very expensive, one feels they cannot buy one ready trimmed, but this answers the purpose of a bed, and can be used until the baby is nearly a year old.

A Japanese Garden

By Harriet C. Shaw

SOMETHING new is to-day hailed with delight, and although we are told there is nothing new under the sun, still, if we are on the lookout, we often find unique ideas, and the following is certainly one of that nature. It is called a Japanese garden. Oh! you say what is there new about that? And, really, there is nothing, taken as a real garden; but a miniature one, made in a deep pan, tin, iron, or brass, with earth and sand and tiny figures of rabbits and squirrels, houses, and ponds of glass; from the woods real mosses and bright berries, with sprigs of different pines and hemlock; is not this a new interest and diversion for the convalescent, either child or adult? The garden, as a whole, is placed on a table near a window, and the combination of tiny artificial shrubs, in miniature pots, with the real live things gathered out-of-doors, which, if well cared for, will continue to live and thrive; this I repeat, makes it fascinating. Here also is an opportunity for ingenuity and to develop a taste for landscape gardening in the child's mind. To make it as near like the real thing as possible, suggests a study of the Japanese way of doing things, and a peep into books on that subject. I do not mean a deep study, only an observing glance at illustrations. It is for a boy or girl educational in many ways, as in gathering the different kinds of pines and mosses, observing the localities in which they grow, and the characteristics of each. It gives an intimacy with nature, and in consequence a broader mental view.

Feed Your Baby Plum Pudding

How would you like to be able to feed your babies pie, cake, pastry, frozen desserts and even plum pudding without running the risk of an after-night of pain and paregoric? You can do this, if you learn how to make your desserts minus the stomachache and you may learn this from Miss Cooper's "New Cookery." She tells you how to make the most delicious desserts you ever ate—and so harmless you could feed most of them to an 18-months-old baby.

Also—she tells you in "The New Cookery" how to make hundreds of other delicious dishes—some delicate and others very substantial—soups, relishes, entrees, roasts, stews, salads, vegetable dishes, pies, cakes, breads, preserves, sauces, and frozen dainties—over 700 of them—the most delicious, the most appetizing, the most nourishing, the most healthful you ever ate and *stomachache-less*. Furthermore, Miss Cooper's "New Cookery" teaches you how to cook economically—how to save money, while you set a better table than you ever have before. All this is in a book of 300 pages, with numerous illustrations—not a large book but worth many times the price in what it teaches you to save in stomachache and money. This present edition, *while it lasts*, for only \$1.50 a copy postpaid east of Rocky Mountains. Order at once, if you wish to take advantage of this offer. You take no risk sending money because, if you are not entirely satisfied, the book may be returned for prompt refund. Order NOW. Let your kiddies have sweeties without stomachache afterward. Address—

GOOD HEALTH PUBLISHING CO.

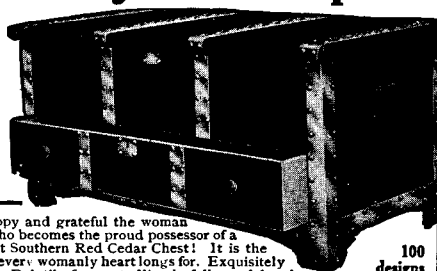
3803 W. Main St.

Battle Creek, Mich.

Birthday Gift Superb

Moth-Proof Red Cedar

15 Days' Free Trial



How happy and grateful the woman or girl who becomes the proud possessor of a Piedmont Southern Red Cedar Chest! It is the gift that every womanly heart longs for. Exquisitely beautiful. Daintily fragrant. Wonderfully useful and economical. Practically everlasting. **A Piedmont protects furs, woollens and plumes from moths, mice, dust and damp.** Any Piedmont shipped on 15 days' free trial. Direct from factory at factory prices. Freight prepaid. Write for 64-page catalog. Postpaid free. Write today. **Piedmont Red Cedar Chest Co., Dept. 55, Stateville, N. C.** 100 designs

ATTENTION We will pay \$1,000 reward if our home butter merger fails to merge one pint of milk into one pound of butter in two minutes sweeter than creamery butter. Demonstrators and general agents wanted. Salary or commission. Write for illustrated circulars and addresses of 1,000 users. Wonderful Invention. **FAMILY BUTTER MERGER CO., WASHINGTON, D. C.**



LEARN RIGHT AT HOME BY MAIL DRAWING-PAINTING

Be a Cartoonist, Newspaper, Magazine or Commercial Illustrator; paint in Water Colors or Oil. Let us develop your talent. Free Scholarship Award. Your name and address brings you full particulars by return mail, and our illustrated Art Annual free. **FINE ARTS INSTITUTE, Studio 893, OMAHA, NEB.**

Don't fail to read the advertisements on this page

Free Trial and Easy Payment Terms
Adjustable and Collapsible



Venus Cabinet Dress Form

The three little wheels at top adjust it to exactly reproduce any woman's figure. When not in use can be collapsed and put away in its ornamental cabinet.

To introduce this wonderful new Venus Dress Form to every woman who sews, we give ten days' free trial and offer special easy payment terms.

Write today for complete illustrated catalog showing various styles, models and prices; or order today with deposit of \$1, and form will be promptly forwarded for free trial.

ACME SALES CO., Dept. O, Bristol Bldg., New York
 Dept. O, 225 W. 29th St., Chicago
Write for Illustrated Catalog and Easy Payment Terms.

Collapses into a Beautiful Cabinet

Your Bunion Can Be Cured Instant Relief Prove It At My Expense

Don't send me one cent—just let me prove it to you as I have done for 57,532 others in the last six months. I claim to have the only successful cure for bunions ever made and I want you to let me send you a treatment FREE, entirely at my expense. I don't care how many so-called cures, or shields or pads you ever tried without success—I don't care how disgusted you feel with them all—you have not tried my cure and I have such absolute confidence in it that I am going to send you a treatment absolutely FREE. It is a wonderful yet simple home treatment which relieves you almost instantly of all pain; it removes

the cause of the bunion and thus the ugly deformity disappears—all this while you are wearing tighter shoes than ever. I know it will do all this and I want you to send for a treatment, FREE, at my expense, because I know you will then tell all your friends about it just as those 57,532 others are doing now. Write now, as this announcement may not appear in this paper again. Just send your name and address and treatment will be sent you promptly in plain sealed envelope.

FOOT REMEDY CO.
 3501 West 26th St.
 Chicago

KILL THE HAIR ROOT

My method is the only way to prevent the hair from growing again. Easy, painless, harmless. No scars. Booklet Free. Write today.
 D. J. MAHLER, 982-D, MAHLER PARK, PROVIDENCE, R. I.

APPLIQUÉ EMBROIDERY

[CONCLUDED FROM PAGE 4]

stitching should be close, but not crowded, and about one-eighth of an inch wide.

Design No. 153-2 is an oblong sofa-pillow or head-rest. It is made of washable linens, and is made up as a loose cover which fastens across the middle of the back from end to end with press fasteners.

It is made of écru-colored linen. The flowers of the embroidered design are appliquéd in a soft green linen, and the tiny double frills which finish each end of the cushion are of the same material. The linen of the flower is stitched down with a green, which harmonizes with it, and this same color is used on the scrolling lines on each side of the flower.

The flower centre is made by cutting away a circle of the appliquéd down to the brown ground linen, after edging it with the buttonhole-stitching in a dull brown color. The heading of this buttonholing must of course be towards the inside of the circle where it will cover the cut edge of the linen. Inside this circle small triangles of satin-stitch forming a wheel are worked on the brown linen in a pale gold.

The curving lines which cross the scrolls are worked in the double chain-stitch, but in a shade darker green than the scrolls. A short series of chain spots in a bright light delft blue are then worked on the inner edge of the scroll, and another series towards the base of the other curving lines placed as shown in the illustration. The same blue is used for the square spots in the centre stem worked in upright satin-stitches, and the line on either side in the stronger green.

The tiny leaves are of turquoise blue and the triangular spot below the flower, and the groups of three square spots between the devices are dark green and brown.

INFANTS' BELTED JACKET

[CONTINUED FROM PAGE 19]

20 sts towards front of neck, with the 28 sts left on needle for shoulder, join white and with No. 3 needles knit reverse st for 20 rows for shoulder. Now take the sts left on one safety-pin (28), put on needle, alternating each st with one of the reverse sts in white, bind all

Home Needlework advertisers are honest advertisers

off on wrong side, knitting 2 sts together as one all across needle. This joins one front and one shoulder of back. Repeat other front in exactly the same manner.

Join color at any corner of jacket with *wrong* side toward you. With crochet-needle go all around jacket, including the little square neck, with double crochet. Continue again all around from starting-point as follows: * One d, ch 3, catch down ch in *same* st, making p, 1 d, p, etc., until you reach corner of square neck. * Catch a p at corner, 1 t, 1 *tight* t with p on edge of it *. Repeat between * all around neck to make place for ribbon. Continue around jacket, 1 d, 1 p, until reaching starting-point. This finishes entire jacket.

SLEEVES.—Cast on 66 sts with white wool and No. 3 needles. Knit reverse st, narrowing each end of needle for 10 rows, for little gusset under arm. Continue knitting reverse st for 85 rows more, without narrowing. Join color (No. 2 needles), k plain across row, knitting 2 tog for fulness in centre of sleeve, leaving 56 sts for cuff on needle when done. Knit 1 more row plain, then p 2, k 2, for 11 rows, k 1 row plain, bind off next row, with *wrong* side towards you.

Sew up sleeve. Join color and crochet picot edge around cuff like jacket.

Now, holding armhole of jacket and sleeve *very evenly* together, placing all extra fulness in sleeve at shoulder, with color, holding sleeve side towards you, crochet one row of d all around armholes.

These little knitted jackets are very practical garments for the young child, as they may be used for various occasions. For common use there is nothing better, as they are warm but not too heavy. While they never look as well after being washed, they can easily be dry cleaned.

A Beautiful Appliqué Design

No. 153-46. (COVER DESIGN.) SOFA PILLOW. *Size, 20-inch.* Design stamped on tan Ramie linen, with same material for back, and on blue, green, pink, and yellow linen for appliqué, \$1.00, or given for three subscriptions, of which your own may be one. Embroidery cotton, 30 cents extra, or silk, 60 cents extra. Perforated pattern, 35 cents; transfer pattern, 15 cents.

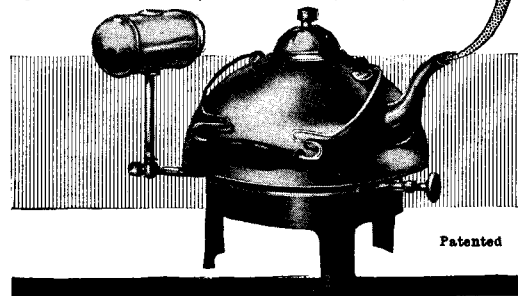
No. 153-47. (COVER DESIGN.) SCARF. *Size, 18 x 68 inches.* Design stamped on tan Ramie linen and on blue, green, pink and yellow linen for appliqué, \$1.50. Embroidery cotton, 41 cents extra, or silk, \$1.00 extra. Perforated pattern, 35 cents; no transfer.

Embroidery commenced, \$1.00 additional.

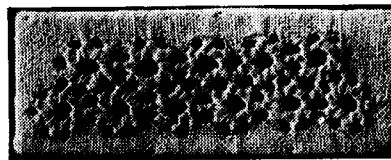
Make Your Wife, Mother, Daughter, or Friend a Gift of an Alpha Alcohol-Gas Stove

Send Us \$1.00 for it Today. It is Shipped Prepaid to Your Door. It's the most practical gift—something she needs. The ALPHA Alcohol-Gas Stove will boil a quart of water, milk or any other liquid within a few minutes. And can be used for hours at a time at a cost of but a few cents for denatured alcohol. How handy and convenient she'll find the ALPHA Alcohol-Gas Stove during the day. And what an infinite amount of trouble it will save for her at night—particularly if there's a sick person or baby to care for! There'll be no more half-dozen trips to the kitchen to heat the needed water. She can get it ready on her ALPHA Alcohol-Gas Stove without leaving her room. It weighs less than 2 lbs. Strongly made; nothing to get out of order; can't possibly explode. And the price is only one dollar. The man in the home, too, will share in its convenience—quickly heated water for his morning shave.

SEND ONE DOLLAR TODAY—check, dollar bill, or money order—and we'll ship an ALPHA Alcohol-Gas Stove, prepaid, to any part of the U. S. or Canada. Alpha Alcohol Utensil Co., 110 Hamilton St., Newark, N. J.



NEW PUNCH STITCH



Centerpiece—Floss to work it—Instructions—Punch needle—Ingalls' Fancy Work Book—ALL for 25 cents. Address, J. F. INGALLS, LYNN, MASS. Box H.

Chapped Hands or Lips?

Not if you use **Dux Emollient**. The Cream of Complexion Creams. Keep your skin in smooth, perfect condition by daily use of DUX EMOLLIENT, guaranteed a soothing, healing, antiseptic lotion for chapped, roughened, frost-bitten skin. A daily necessity for those exposed to wind and cold. Let us send you a large bottle postpaid for 50 cents. DUX EMOLLIENT CO., Warehouse Point, Conn.



WRITE MOVING PICTURE PLAYS

Constant demand. Devote all or spare time. Correspondence Course Not Required. Past experience and literary ability unnecessary. DETAILS FREE. ATLAS PUBLISHING CO. 790 CINCINNATI, OHIO

\$50 EACH

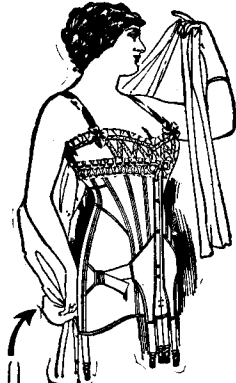
LACES

Shadow, cluny, val, and torchon, from loom to you. Beautiful laces for lingerie and infants' clothes.

Write for free samples and price list to day. The B. B. Lace Co., Hope, R. I., Dept. G.

We introduce our advertisers to you as our friends

**Any Woman Can Easily
Make from \$18 to \$35
a Week, selling**



DR. SCOTT'S

Spinal Supporting Back
Magnetic Corsets on
the Market 36 Years

**A Perfect Figure
and Perfect Health**

No more back-
ache, nervousness
and rheumatism,
if you wear Dr. Scott's
Corsets.

While they give
your figure the newest
style lines, the mag-
netism stimulates the
circulation and re-
lieves all stomach,
back and nervous
troubles. 10 new
styles. \$1.00 to \$5.00

Money Talks—Big Profit for You

Our agents earn \$3.00 per day and upward selling Dr. Scott's Spinal Supporting Back Corsets and Specialties. **No Experience Necessary.** Exclusive territory given. Write us at once before you turn this page, and we'll send our **Catalogue of Specialties** with a liberal proposition to you. Our corsets and specialties are easy to sell because they are all that we claim and well advertised. Compass free to test power. Write now, mention this paper, and we will send free, a sample cake of complexion soap.
Pall Mall Electric Co., 128 W. 34th St., New York.

**A New Way to Be
An Artist**

YOU can learn Commercial Art in your leisure hours, and it will pay you from the very start. The new methods, simple and original, enable you to do the work at home. Pen-and-ink, wash drawing and water colors are included. If you write to Dorothy D. Deene (a postcard will do) she will send you free a picture in colors worthy of framing, entitled "Belle of the Ball," a test chart and full particulars of the work. Miss Deene's studio is at 1008 E. 41st St., Chicago.

Runs for months on two small batteries.

The Midget Perforator
Make your own Embroidery Stamping Patterns. Perforates as a pencil writes. Several patterns at once. Easy to operate. Satisfaction guaranteed or your money back. Greatest help in *Fancy Work Shop*. A money maker. *Perforator* with valuable *Hints for Stamping* sent prepaid—\$6.00. For samples, information, etc., address **F. A. RICE, 304 Van Buren St., Joliet, Ill.**

**California DECORATED
LEATHER GOODS**

—portieres, pillow covers and novelties of genuine leather; direct to you from manufacturer. Distinctive and beautiful. Leather portieres (\$5 and up) sent on approval. Eucalyptus Portieres and Beads. **ILLUSTRATED CATALOG—FREE**
Art Skins, \$1 to \$1.50
24 Samples for 4c Stamps.

Suntan Leather Co., Mfrs., 821 Bdwy., Los Angeles

OLD COINS Wanted. \$1 to \$500 paid for hundreds of coins dated before 1899. Send once for our New Illustrated Coin Value Book, 4x7. Get Posted.
CLARKE COIN CO., BOX 2, LE ROY, N. Y.

**TOWELS WITH CROCHET
INSERTION**

[CONCLUDED FROM PAGE 15]

17 sp. 118th row—8 sp, 1 bl, 8 sp. 119th row—17 sp. 120th row—8 sp, 1 bl, 8 sp. 121st row—17 sp. 122d row—8 sp, 1 bl, 8 sp. 123d row—17 sp. Repeat work from *. Double crochet around entire strip of insertion and finish each end as follows: Two rows of 17 sp each, 3 rows d, 1 row of 17 sp, 1 row d.

IMITATION HEMSTITCH IN CROCHET FOR TOWEL No. 153-20.—Make ch of necessary length; turn, and make d into each st of ch. Break thread and fasten into other end of work; ch 4, 2 d t (holding last st of each d t on needle, making 3 st in all); draw thread through all and fasten snugly with chain st. * Chain 2, 3 d t, holding last st of each on needle (making 4 in all); draw thread through all and fasten snugly with chain st. * Repeat between * length of work. Break thread and beginning at other end of work make 3 d in each open space.

When sewing the "hemstitching" into the towel, the "open" edge should always be sewed in first, otherwise the work will not be even.

**Description of Stitches Used
in Crochet**

Chain (ch). Stitch (st). Stitches (sts). Picot (p). Slip stitch (sl st). Having loop on hook, insert hook in work, thread over and draw through both work and loop on hook. Double crochet (d). Having loop on hook, insert hook in work, thread over and draw through, over and draw through both loops on hook. Half treble (h t). Having loop on hook, thread over, insert hook in work, thread over and draw through, over and draw through three loops on hook. Treble crochet (t). Having loop on hook, thread over, insert hook in work, over and draw through, over and draw through two loops, over and draw through two remaining loops. Double treble (d t). Having loop on hook, thread over twice, insert hook in work, thread over and draw through, over and work off loops by twos. Long treble (l t). Having loop on hook, thread over three times, insert hook in work, thread over and draw through, over and work off loops by twos.

We guarantee the reliability of every advertiser in this magazine



Reduce or Increase Your Weight — Perfect Your Figure

My picture "Neptune's Daughter" shows what my course of Physical Culture has done for me.

Become my pupil and it will do as much for you. Devote but fifteen minutes daily to my system and you can weigh what Nature intended. You can reduce any part of your figure burdened with superfluous flesh or build up any part that is undeveloped.

My course tends to make a figure perfectly proportioned throughout—a full rounded neck; shapely shoulders, arms and legs; a fine, fresh complexion; good carriage with erect poise and grace of movement.

Improve Your Health

My system stimulates, reorganizes and regenerates your entire body. It helps transform your food into good, rich, blood. It strengthens your heart, lungs and other organs, conquering all weaknesses and disorders and generating vital force.

My book, "The Body Beautiful," should be read by every woman, and *I will send it to you free.* It explodes the fallacy that lack of beauty or health cannot be avoided. In it I explain how every woman can be vigorous, healthy and attractive.

I have practised what I teach. In childhood I was puny and deformed. I have overcome all weaknesses by my own natural, drugless methods. Millions of people have seen in me a living demonstration of my unique system of health-culture and body building. If you are weak, nervous, fat, thin, unshapely, tired, lacking vitality or in any other respect not at your very best, I can surely be of service to you.

MY GUARANTEE

With my free book "The Body Beautiful," which is fully illustrated with photographs of myself explaining my system, I give full particulars of my Guarantee Trial Plan, whereby you can test the value of my instruction without risking a single penny.

Send 2c stamp for "The Body Beautiful" and Trial Plan to-day.

ANNETTE KELLERMANN, SUITE 801 H
12 WEST 31st STREET, NEW YORK



8 Embroidery Articles 15c



A Big Combination, consisting of this handsome Collar and Cuff Set, a Wild Rose Centerpiece, a Daisy Doily, a Holly Doily, a Shopping List Cover and a Hair Ornament, all on Fine Quality Art Linen, only 15c. Special Bargain to introduce our new illustrated Catalog of exclusive designs.

JOHN A. SIMS, 686 BERGEN, BROOKLYN, N.Y.

CHINA KILNS \$15

Gold, Colors, Studies. Black Outline FREE, for 4 China Painters' names. Magazine of China Painting 50 per year. Sample 10c. ANGLO-FRENCH ART CO., VAN BUREN ST., CHICAGO

Bargains In Seeds

2c Per Pkg. and Up. Hundreds of special offers in surplus seeds and plants at bargain prices. Don't buy until you have seen our fine large catalog and bargain list, mailed free. IOWA SEED CO., Dept. HN, Des Moines, Iowa

Stamped Linen Table Set 10c
One 12 in., two 6 in., four 4 in. Stamped on good material. New design. Catalog Perf. Patterns, Stamped Goods, Monograms, Stencils, etc.
D. A. McKinnon Co., Designers, Manchester, Mass.

COLORED Cross Stitch Book

PRISCILLA Colored Cross Stitch Book No. 1. Has four (4) full page plates in full color, illustrating 35 separate designs and a complete alphabet.

The Colored Cross Stitch Book No. 2 also has four full pages in color, illustrating 40 designs, and the covers of both books show color designs for working.

Facing each plate is a full page of text matter giving a wealth of suggestions for the worker.

Price, 25 cents—Postpaid

The Priscilla Publishing Company
85 Broad Street, Boston, Mass.

Encyclopedia of Needlework

800 pages. Hundreds of illustrations. Every plain and fancy needlework stitch known to woman fully explained. Nothing omitted. This book makes you an expert. Bound in boards, price 75 cents postpaid.

Home Needlework Magazine, Boston, Mass.

Home Needlework advertisers are reliable



FREE

Information of greatest value to every housewife

Write today for your copy of our new illustrated booklet explaining how to solve the dress problem—how always to look neat and trim about your work.

Wear the Baldwin House Dress as a protection to good clothes—or in emergencies slip it on over the soiled house dress—or wear it as a regular house dress.

On and off like a coat. Fits any figure. No buttons, no hooks. Snap at back holds garment in place. Reversible front gives double service.

Choice of high and round collars, square and "V" neck. Percales in gray and white nurses' stripe, black and white shepherd's check, white ground in stripes and checks of black, and blue polka dot. Also light and dark blue chambrays.

BALDWIN HOUSE DRESS

Snap! and it's on!

PATENTED
V-neck
Princess
Price \$2.25

If your dealer will not supply you, we will send your choice, fully prepaid, on receipt of \$2.25.

Send for free illustrated booklet.

BALDWIN GARMENT CO.
86 Main St., Holyoke, Mass.



SOLID GOLD SIGNET RING \$1
WITH YOUR INITIALS
Hand Engraved—Sent Postpaid
A Suitable Gift
For Ladies, Girls, Boys
Solid Gold—Money
Guaranteed Back if Not Satisfied.
Measure size with strip of paper around
finger, pin it to a dollar and mail it to-
day stating initials desired.
Vogue Jewelry Co., 1278 Duane St., N.Y.



Sell Dress Goods and Hosiery

\$3000
Big Textile Mills want ambitious men and women everywhere to show latest dress fabrics and hosiery. 400 patterns. Easy sales. Values beat stores. Earn Big Money. All or spare time. Complete sample outfit starts you. Call at our mills, or write
Steadfast Mills, Dept. 35 Cohoes, N.Y.

"I Just Love My Beads"

is an oft heard expression of ladies who have chains of Shumway perfume beads. The delicate perfume lasts indefinitely. Beautifully made necklaces, 6 colors, 15 shades, 18 to 60 inches, \$1 to \$5. Shumway Beads, hand made from best imported materials, bear no resemblance to the unsatisfactory corn starch and salt substitutes. Catalog.
SHUMWAY BEAD CO., 1000 Lakeside, KIRKLAND, WASH.



Agents \$60 WEEKLY

Robinson Folding Bath Tub. Big seller. Costs little, no plumbing, little water. Weight 15 pounds, folds into small roll. Full length baths, far better than tin tubs. Guaranteed 10 years. \$10 a day easily made. Write for free tub offer. Robinson Cabinet Mfg. Co., 888 Factories Bldg., Toledo, O.

Curtains with Crocheted Border

By Emma Boothby

MATERIAL.—For one pair, two and one-half yards long, five yards of scrim; ten balls Cordonnet crochet cotton No. 3, at 18 cents per ball; steel crochet-hook No. 3, at 5 cents.

(For description of stitches, see page 44.)

DIRECTIONS. MEDALLION.—Chain 10, join with sl st. *2d row*—* Five h t, ch 4, catch in last st with sl st *, repeat from * to * 5 times, join, sl st in next st. *3d row*—Chain 14, 1 d t between picots, ch 10, repeat all around, join. *4th row*—In 1st ch * make 5 h t, ch 4, catch in last st, 5 h t, ch 4, catch in last st, * repeat from * to * in all 5 ch, join with sl st, sl st in next st. *5th row*—Chain 10, 1 t in centre st between p, * ch 7, 1 t in centre st between p, * repeat from * to * all round, join. *6th row*—* Make 5 d t, ch 4, catch in last st, 5 d t, * repeat in each ch around, join.

SCROLL.—Chain 60, turn, make 1 d t in 2d st, make 100 d t over ch, catching last one in last st of ch. Form a loop at end by catching in 35th st, leaving outer edge to turn out. *2d row*—Chain 10, catch in 6th st, repeat 6 times, then catch in 7th st to end, turn. *3d row*—* Chain 6, catch over centre of ch *, repeat from * to * to end, catch in 5th st, turn. *4th row*—* Make 5 d t in ch, ch 4, catch in last st, make 5 d t in ch, ch 4, catch in last st *, repeat from * to * in each ch to end. Eleven scrolls and eleven medallions are needed for one-half curtain. Baste medallion on corner of scrim, then scroll on each side, then medallions, and so on across bottom and centre edge of curtain, then stitch inside edges with machine. Cut out scrim from under medallions and scrolls, and hem back with needle and thread. Make a hem at top for pole.

These curtains are not at all difficult to make, and are very attractive, the sheer material making a pleasing contrast to the heavy crochet. Either white or écreu materials may be used with equally satisfactory results, this depending somewhat upon the room in which they are to be used.

We guarantee honest treatment from our advertisers

Make Walking a Joy

Thousands of women are practically **hobbling** through life. You see them everywhere. They walk as though each step meant **discomfort**. Each step **does** mean discomfort, and **no wonder**. The shoes they wear are almost as barbarous as the foot wrappings of Chinese women. They crowd the feet into shapes totally different from what Nature intended; they cramp the toes, elevate the heels, bring corns, bunions, callouses; they make natural, easy walking impossible. And all this is as **unnecessary** as it is uncomfortable.



"Style" and good looks can be combined with common sense and **comfort**. Look at the Jordan Hygienic Shoe pictured on this page. Has it not that indefinable something called "**style**"? Has it not genuine good looks? Can you not imagine the trim, neat, well clad appearance that it gives to a woman's foot?

But better than all this, a Jordan shoe **fits the foot of the wearer at every point**. There is no crowding of bones or cramping of muscles. There is **ease, comfort, freedom**.

Don't Have Crippled Feet

How About Your Feet Have your feet been entirely comfortable to-day? Has walking been so easy and natural that you could forget feet and shoes altogether? Or have you been constantly reminded of cramped toes, corns, bunions, callouses, tired insteps?

Don't Be Foolish Don't continue in the belief that foot discomfort or suffering is something you have to put up with. Don't allow yourself to think that corns, bunions, callouses, weakened arches and other similar foot troubles cannot be cured. Don't forget that you can stand or walk with as perfect comfort as any woman ever did, if you will go at the problem **right**. And above all else, remember that after you have secured this relief, you can **keep** it, and at the same time have your feet trimly and stylishly clad, by wearing "**Jordan Hygienic Shoes**."

Who is Dr. W. F. Jordan? Dr. Walter F. Jordan is an orthopaedic surgeon and a **foot specialist**. He has studied feet as the oculist studies eyes. His experience covers a quarter of a century of active work and experiment. His "**Jordan Hygienic Shoes**" for men, women and children are among



the very few scientifically designed and made shoes on the market to-day. His famous "**Arch Springs**" are almost the only devices of the kind that bring about the relief and cure of fallen arches, or "**flat foot**," with a minimum of discomfort.

Are You Ready? Are you ready to let Dr. Jordan tell you what really is the trouble with your feet, and how that trouble can be remedied?

Are you tired of having your **feet fitted to shoes**, and would it be a comfort to have shoes that **really fit your feet** — even the bottoms of them?

Then write us, giving as full particulars of your case as you desire. Your letter will have Dr. Jordan's personal attention, and if special advice is called for, he will give it **free of charge**. We will also mail you our catalogue and price list, and a copy of Dr. Jordan's treatise on **The Care of the Feet — Home Cure of Corns, Bunions, etc.** Write to-day.

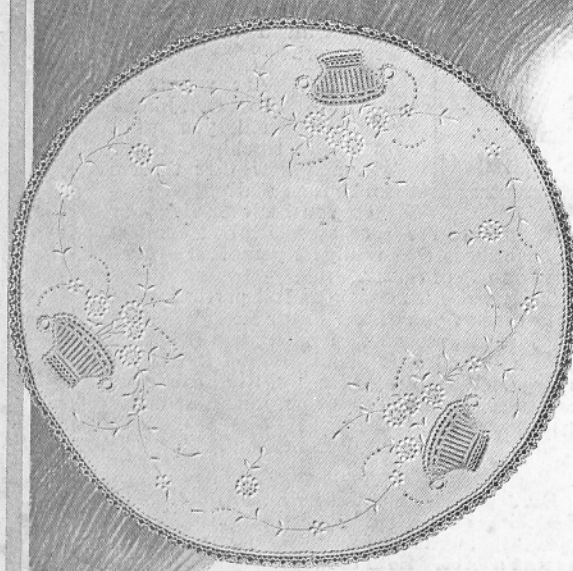
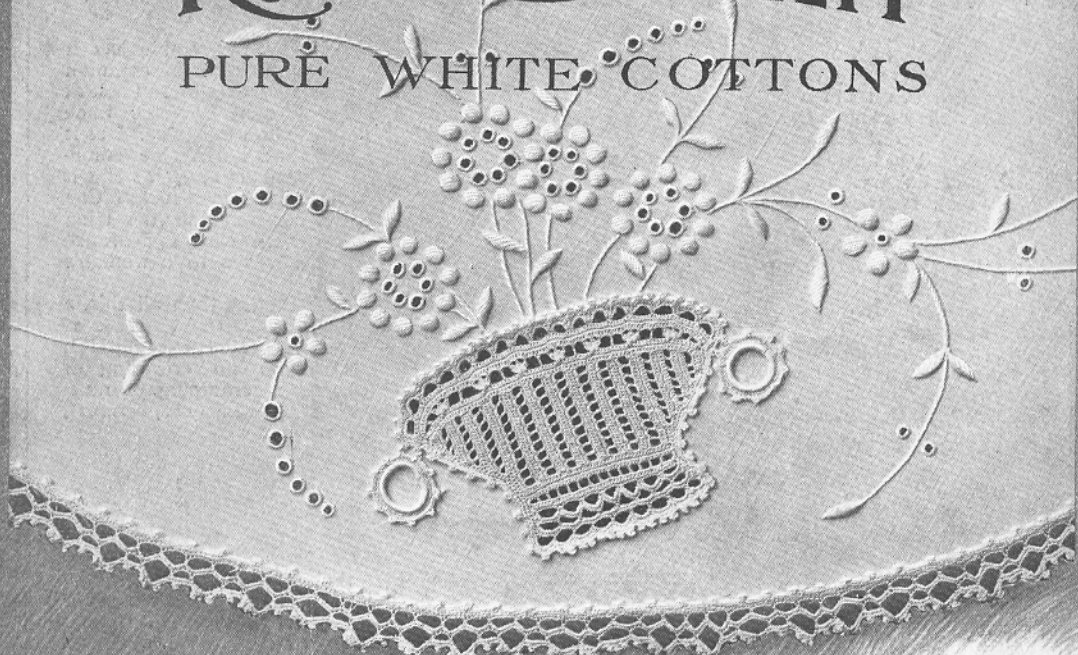
Dr. Jordan is an authority on Trusses, Belts, Supporters and all kinds of Elastic Goods. If interested, write us for 40-page catalogue or expert advice. **Both are free.**

Walter F. Jordan & Company
120 H Boylston St., Boston, Mass.

REG. U.S. PAT. OFF.

ROYAL SOCIETY

PURE WHITE COTTONS



This white center piece and many other beautiful designs are illustrated and described in Royal Society Crochet Book No. 5. Price 10c; at all dealers.

AMONG all the characteristics that combine to make a perfect white cotton for embroidery and crochet, the permanence of its whiteness, its lasting smoothness and brilliancy, are the qualities to be considered first and foremost.

Royal Society White Cottons possess these essentials to a superlative degree, which explains why they are universally chosen for needlework that must be not only beautiful but must *endure*. Made from long-fibre Sea Island cotton, bleached by a process exclusively our own, they never turn yellow, improve with repeated washing and have unusual strength.

There is a size and twist, all highly mercerized, for every kind of needlework —

- Soft loose twist*—Rope and India.
- Medium twist*—Coarse, Medium and Fine.
- Hard twist*—A, B, C, D, E and F.
- For initialing, etc.*—Flosselle, 8, 14, 16, 20, 25, 35.
- Marking cotton*—Laundry-proof Flosselle, 8 and 16.
- Dividable cotton*—Strand floss, Ball floss and Six Ply.
- For lace-making and tatting*—Cordichet, sizes 1 to 150.
- Crochet cotton*—3, 5, 8, large and small balls.
- And the washable artificial silk*—Celesta

Send for Royal Society Booklet

It illustrates and describes the entire Royal Society line—pure white and fast colors.

Royal Society Products are Sold by Dealers Everywhere. Your Dealer Can Supply You or Will Procure the Exact Article You Want.

H.E. VERRAN COMPANY Incorporated 583 Broadway New York