


PRACTICAL WEAVING SUGGESTIONS

VOL. 4-57

By Jeanette Lund and Ruth Jelks

A VISIT OF TWO WEAVERS



'Twas six months before Christmas, and all through the lan'
Everyone was enjoying his vacation plan;
The house was all quiet, since the children had left
To spend the whole summer at Camp Sea Cleft;
Mother and dad were off to visit the hills,
Where rocks of all kinds would give them a thrill;
And with bobbins wound tight, in yarns so fine,
I had just settled down for a long weaving time;
When out on the porch there arose such a clatter,
I sprang from my bench to see what was the matter.

Away to the door I flew with a dash,
Threw open the screen as quick as a flash!
The sun on the grass of our fresh green lawn
Made shadowy patterns of lacy palm fronds;
And who should be standing outside the room
But a dear weaving friend with her twenty-inch loom
And with shuttles and reeds and with samples galore;
I knew in a moment it would not be a bore.

We settled right down and planned our warp threads;
She chose some greens and I chose some reds;
And we figured, and measured and decided each piece.
First, towels! then aprons! then curtains! and napkins!
Next, shoe bags! then blouses! cummerbunds and lapkins!
To Lily we wrote for our orders so fast!
Send red yarns, send green yarns, in colors that last!

As that mill is prompt with the weavers it serves,
If you send special orders, they call in reserves.
So back through the mails in a time that was short
Came a box full of yarns in the greatest of sort.

As we wove on our webs and experimented around,
We saw how Christmas presents thereon could be found.
From a twenty-yard length of her eighteen-inch green,
My friend for next Christmas such gifts did she glean!
A cheery red warp I had strung on my loom,
And it seemed just like Christmas was filling the room.

Our warps how they sparkled with metallics so gay!
Each piece was like Christmas, so merry were they!

In Summer and Winter I threaded my heddles,
 For each gift tromped differently upon the treadles.
 As for the warp on her loom, she threaded in Periwinkle,
 And the picks, how they grew on her web in a twinkle!

The sizes of weft were varied in lea,
 And with ease we did weave them, as smooth as could be.
 We had fun and delight, creating designs
 To say "Merry Christmas from our house to thine!"
 She was clever and quick—just like an elf—
 And I laughed at her motifs, in spite of myself.
 A throw of my shuttle and a change of my shed
 Soon gave me to know I had nothing to dread.

We spoke not a word, and stopping for nought,
 We wove all our presents, then had the same thought;
 And laying our shuttles beside our looms,
 We decided to tell all you weavers right soon:
 How you too could weave, to each friend give a keepsake,
 And by using one warp, much less time would it take.
 So for gifts that say Merry Christmas to perfection,
 We suggest to you the following directions:

GIFTS WITH A CHRISTMAS LOOK

Warp I—Green

Warp: Article 114, Pearl 20, alternate ends of Emerald (429) and Bottle Green (562); 20 yards long; 5400 yards of each color, or approximately $\frac{3}{4}$ pound of each.

Sleying: 30 ends per inch, double in a 15-dent reed, 18 inches wide in reed; total ends 539 (or 1 end less than the full 18 inches).

Threading: Periwinkle as described in Loom Music for June 1945 (chosen because the overshot skips are short). All bottle green threads are on harnesses 1 and 3; thus on a counterbalanced loom, to weave tabby A means that all the emerald threads come to the top of the web. All treadlings given are for a counterbalanced loom.

Border: 1, 2, 3, 4—5 times	20 ends
Pattern: A-C (42 threads)—11 times	462 "
Balancing Group: A-B (37 threads)—1 time	37 "
Border: 4, 3, 2, 1—5 times	20 "
	<hr/>
Total	539 ends

Tie-up: Standard.

Sinking Shed

		X	X	X		4
	X	X	X			3
X	X			X	X	2
X		X	X			1
1	2	3	4	A	B	

Hostess or Party Aprons

Weave about 30 inches for main part, to be hemmed at ends and then gathered along one selvedge onto a band, 4 to 5 inches long and the width of the warp. One strip woven 26 inches long will cut the long way to make 4 or 6 ties, to be hemmed by hand.

Green and silver apron. All plain weave in the following order:

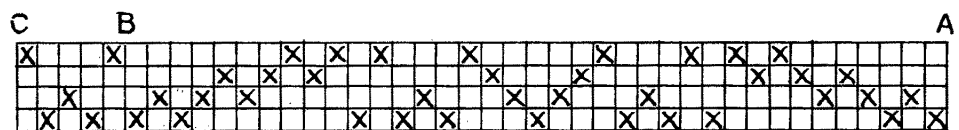
1 shot Article 105, Black novelty in size II
1 " " 114, Emerald Pearl 10
1 " " 305, Silver gumpe. Approximately 150 yards of each.

Apron with red stripes.

Background in plain weave and tabby for pattern: Article 214, Black 20/3; approximately 425 yards.
 Pattern stripe: Article 108, Red (95) 8/3; approximately 75 yards.

Treadle: 4, 3, 2, 1, 1, 2, 3, 4, with tabby.

Ties for the two aprons: plain weave of 2 shots black 20/3, 1 shot fine black novelty.



Shoe Bags

These are wonderful to use for shoes when traveling. Pick colors to suit the person who will use them, and give them in pairs. For one bag for a woman, weave about 13 inches; fold along the warp into an envelope shape and seam and hem up the sides, leaving selvages as they are; or fold and sew into a bag shape with a casing and drawstring at one end.

Bag illustrated: 1 shot Article 1014, Black four-strand filler, on A

1 " " 105, White novelty in size I, on B

2 shots " 714, Talisman (K-62) 10/3, treadle 1, treadle 3.

This weave is adaptable to many articles for which a textured, close-woven effect is desired. Used for a bed spread, it would combine good looks and durability. Carpet warp, rug weave yarn and size I novelty on a warp of carpet warp, set 12 or 15 ends to the inch, also make a good combination for place mats for casual use and easy upkeep, either all in one color or in two neutrals and a color. Essentially it involves using two different yarns always in the same order on the two tabby treadles, and then weaving two shots of a third yarn on two "opposite" pattern treadles. It is handsome woven on a crackle threading.

Book Cover

Here's a gift for a friend who weaves (or for one who cherishes the books in her home library). Get the dimensions of one of her favorite weaving books and make a cover to fit, perhaps with her initial laid in. The one illustrated was woven for Atwater's Shuttle-Craft Book of American Hand-Weaving—about 9 inches long off the loom, plus one-half inch at beginning and end for a small hem at top and bottom of cover. Warp goes lengthwise of book, weft goes around it. The part which is turned under the covers is whipped to the outside part at top and bottom to form pockets into which to slip the covers of the book. To get length correct, weave approximate amount, loosen tension and leave overnight; then measure in morning and add more if needed.

Treadling: 1 shot bottle green Pearl 3 on A

1 " Article 105-A, Natural and gold in size II, on B

1 pattern shot emerald Pearl 10 (order of treadles for pattern shots is 1, 2, 3, 4, 3, 2).

Baby Bib and Case for Glasses

Weave about 12 inches with white novelty in size 1 for pattern, and Article 314, white 20/2, for double tabby shots between pattern shots. Treadle: 1, 2, 3, 2, 3, 4, 3, 4, 1, 4, 1, 2 and repeat. Add one-half inch tabby in the 20/2 at beginning and end for small hems.

To make up, cut a small half-circle from a narrow end of a 9 by 12 inch piece. Hem all edges except the neck. Bind neck edge with bias tape or ribbon, leaving ends long enough to tie. The piece left from the bib can be made into a case for glasses. Cut a piece 6 inches along the selvedge and 6½ inches the other way. Use selvedge for top of case, turn edges under on other 3 sides, add a felt lining, fold the long way, and top stitch across the bottom and up one side.

Hand Towel

Weave about 28 inches, plus fringe or hems. The green and white one pictured was woven with white size I novelty for pattern shots (and for absorbency) and Talisman 10/3 for tabby and for the solid green stripe at each end. The all-over textured rectangle effect was obtained by using a double tabby every 4 pattern shots: 4, A, 1, B, 1, A, 4, B, A, 4, B, 1, A, 1, B, 4, A, B and repeat.

A friend who saw this material and that for the bib suggested they would make up into wonderful casual jackets. It's an idea for an enterprising weaver and seamstress to try.

Table Mats

Pattern, texture, color, special weaves, Christmas laid-in designs—choose what you will for mats for gifts. One advantage of an 18-inch warp is that designs can be put in just the way they will look when the mat is on the table. Weave about 13 inches, plus hems to turn under, for a finished mat about 12 by 16½ inches. Since the warp width is a little wide for medium-sized napkins, try lapkins instead. Weave 9 or 10 inches, plus small hems to turn under; a small border or design near one edge can repeat something from the mat, or the entire lapkin can be in plain weave in a matching or contrasting color.

Green and silver mat: 2 shots silver guimpe on A, B

4 shots Talisman 10/3, treadles 3, 4, 1, 2

This pattern is easy to remember and weave; when the tabby treadles are in the middle of the loom, simply weave the treadles in order from left to right, putting in the silver on the tabby treadles and the talisman on the other four; when the tabby treadles are on one side or other of the loom, again simply weave the treadles in order, and the effect will be almost identical with the above.

Textured mat: 1 shot Article 414, Emerald (62) carpet warp, on A
 1 " Talisman 10/3 on treadle 4
 1 " Green (N-459) novelty in size I, on B
 2 shots Talisman 10/3 on treadles 1, 3.

The **matching lapkin** used three repeats of the pattern as a narrow border on a background of plain weave in Pearl 10; weave bottle green on A, the emerald "up" shed, and emerald on B, the opposite shed.

The **red metallic and black mat** (shown at top of photograph on page 3) had the hems and main part of the mat and of the matching lapkin in plain weave — 1 shot 20/3 black, 2 shots fine black novelty, and repeat. The pattern in red nylon-reinforced metallic was one repeat of Periwinkle "as drawn in" (see 49-50, June 1945 Loom Music), with double tabby of article 314, black 20/2. The hem was turned up to this 3-inch pattern stripe, and a narrow pattern stripe was used at the other hem as well as on the matching lapkin.

Tree Sheet (Shown around base of tree page 3)

If you'd like to add something special to the holidays, make a sheet to go under the Christmas tree, for your family or for that of a dear friend or a relative. Make it rich with metallics and mercerized threads, or all in one color for a special effect; or delight the children by laying in whimsical designs. Chances are you'll never regret the hours you spend on it, for more than likely it will become a cherished heirloom to be used year after year.

One version of a tree sheet was made on the 18-inch warp from two yard-long strips, hemmed at each end and then lapped and sewed together by hand for only half of the length; the open edges of this center seam go on either side of the tree trunk and lap over each other when the sheet is in place. This size will fit only a small tree; two 30-inch wide strips, each 54 inches long, will make a good size for a large tree.

Treading: 1 shot Article 305, Black and gold variegated metallic, on B.

1 shot article 1014, Emerald green (Y-62) four strand filler, on A
 1 shot black and gold on B
 1 " bottle green Pearl 10, wound double, on A
 1 " black and gold on B
 1 " talisman 10/3 on A
 1 " black and gold on B
 1 " Article 414, Emerald (62) carpet warp, on A
 1 " black and gold on B
 4 shots alternately bottle green Pearl 10, wound double, and talisman 10/3 on treadles 1, 2, 3, 4.

Approximate amount of yarn needed for one yard: 180 yards bottle green Pearl 10, 150 yards black and gold metallic, 90 yards talisman 10/3, and 30 yards each of the carpet warp and the four strand filler.

Cocktail Napkins (Shown on tree page 3)

Here's a place to let your imagination have free rein, for small napkins for holiday parties can be as gay as you wish. A 7½-inch strip will cut into three small napkins, and a 9-inch strip into two somewhat larger. Some possibilities are all-over stripes; a bright pattern stripe near one edge; tiny designs or figures in any of the finger techniques such as Brooks bouquet, Danish medalion, tufts, soumak, leno, or laid-in; plain weave with half the napkin in one color and half in another. A word about finishing: if you pull a thread at the inner edge of the fringe and use this as a guide for stitching on the machine before raveling the fringe, the stitching will show scarcely at all.

Last But Not Least—Little Things

(Illustrated on front cover)

Would you like your Christmas cards and letters to carry your imprint as a weaver? Then from the small pieces left from weaving projects, cut small Christmas shapes and attach with rubber cement to plain cards and stationery; write in your own appropriate greeting or holiday message. Do the same on calendars, invitations, place cards, bridge score cards and tallies. If you have no scraps, weave up the last few inches of the warp in bright colors and metallics especially to fit the kind of cards you'd like to make.

Special drawing or construction papers can be folded

and have openings cut in the top layer in the shape of trees, bells or ornaments—each backed by a piece of hand weaving. Cardboard cut in the shape of circles or bells or ornaments can be covered on both sides with hand weaving and hung on the tree. To reduce fraying of cut edges: cut from light weight paper the correct shape and cement it to the cloth. Then cut out cloth around paper and attach to card or stationery.

Gifts That Say "Merry Christmas"

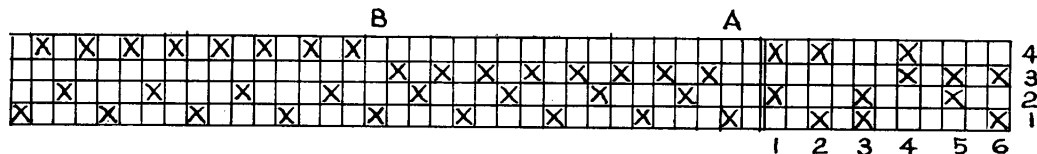
Warp II—Red

Warp: Article 214, 20/3 Red (148); 20 yards long; approximately 3 pounds 2 ounces.

Sleying: 30 ends per inch, double in a 15-dent reed, 28 inches wide in the reed; total ends 840.

Threading: Summer and Winter in a small repeat suggested by the draft in Harriet D. Tidball's "Ten Projects on a Long Warp," Vol. XXI **Practical Weaving Suggestions.**

Tie-up: as below. For more versatile weaving, tie each of the harnesses to a single treadle. Harnesses 1-2 and 3-4 make tabby combinations, so tie them to the other two treadles.



Stole

Finished size: 26½ by 82 inches

Weft: approximately 1 oz. Article 214, 20/3 Red (148), and ¼ oz. Article 305, Silver guimpe.

Some favorite aunt or cousin can always use a stole. Splashed generously with either gold or silver metallic, it will surely bring pleasure to the wearer. Woven at the beginning or end of the warp, it can make use of the tie-ends wastage for one set of fringes. The height of the wearer determines the length of the stole.

Evening Blouse

Advance pattern 6777, size 12

Weft: approximately 2 oz. Article 214, 20/3 Red (438), for each yard of cloth needed, plus ¼ oz. Article 305, Gold guimpe.

Some time during Christmas festivities, what hostess hasn't longed for an evening blouse to top a pair of toreador pants or lounging pajamas or a full gathered black evening skirt! With the wearer in mind, select a pattern and use its pieces to determine where to weave in desired designs. The pattern pieces also act as a guide in calculating the amount of material to weave. Be sure to allow for shrinkage. For that Merry Christmas sparkle, there are varying sizes of metallics, braids and beads, not to mention the different shapes of sequins that can be used.

Guest or Bath Towel

Hemmed size: 26½ by 38 inches

Weft: approximately 6 oz. Article 105, Red (440) in size I; ¼ oz. Article 214, 20/3 Red (438); ¼ oz. Article 305, silver or gold guimpe.

Towels are always a welcome gift in any household, especially when they have that Merry Christmas look. Weave a set to brighten a friend's bathroom or kitchen during the holidays. Lily Novelty in size I woven with a favorite Summer and Winter pattern will give a good absorbent textured towel. Try Lily's not-tarnishable guimpe in a Christmas motif for an added touch of festive gaiety.

Mandarin Jacket (finger-tip length)

Simplicity pattern 1608, size 12

Weft: approximately 3 oz. Article 714, 10/3 Red (95), for each yard of cloth needed; ¼ oz. Article 114, Pearl 3 Gold (79), for laid-in motif.

Just right for bringing the holiday color to cheer the lady-in-waiting; or that special college miss would thrill to a mandarin jacket, especially if her sorority letters were used as a motif. The jacket illustrated has a Chinese character which was found on a charm bracelet pendant. Greatly enlarged, the character was laid in four times to make the design.

Gifts That Say Merry Christmas



Cummerbund *(Shown beneath stole page 7)*

Weft: approximately $\frac{1}{2}$ oz. Article 305, Gold guimpe;
 $\frac{1}{2}$ oz. Article 214, 20/3 Red (148).

Cummerbunds can make the rounds of holiday parties whether on a junior miss or on the fraternity man. They are cut on the bias, and it takes approximately $\frac{7}{8}$ yard material for an average size for a woman.

Table Cloth or Tree Sheet

Finished size: 53 by 44 inches

Weft: approximately 2 oz. Article 214, 20/3 Red (438),
for each yard of cloth needed; 2 oz. Article 305,
Silver guimpe.

And why not a gift that could become a traditional piece while serving a dual role, whether under the Christmas tree to catch the needles or on the table to catch the crumbs? The illustrated cloth is bordered on the ends by wide bands of woven silver guimpe and on the sides by stripes of heavier silver guimpe. To make the side stripes, sley 2 inches of heavier silver guimpe on one side of the warp as a floating warp. One length was woven twice as long as the width of the warp, cut in half and seamed so the heavy guimpe stripes would be on the outside.

Napkins or Place Mats

Finished sizes: 13 by 13 inches unhemmed
10 by 16 inches hemmed
13 by 18 inches unhemmed

Weft: approximately $1\frac{1}{2}$ oz. Article 214, 20/3, will
make four napkins or place mats of any one of the
above sizes.

For the relatives or friends who entertain during the Christmas season, make napkins or place mats, either plain or with a Christmas motif. Functional, yet when woven on a cheery red warp with a Merry Christmas look, they become an appreciated memento that adds to any festive board. Weave a piece twice the desired length of a mat or napkin and then divide it into quarters for a set of four. The illustration shows a laid-in candle motif using Article 105, White in size I, for the wax and Article 114, Pearl 3, Old Gold (79), for the flame.

Cottage Curtains

Weft: approximately 2 oz. Article 214, 20/3, will make
a yard.

When the clan gathers for the annual putting up of Christmas decorations, have on hand cottage curtains that can bring the Christmas look to the kitchen or dinette windows. Using metallics or novelty yarns, weave borders that suggest some Christmas motif.

Little Gifts With Big Uses

Now, let's not throw away any scraps from that Merry Christmas warp! Illustrated (on tree) are decorated place holders cut into the shape of Christmas motifs. Using Simplicity pattern 1810 (one size), make a pair of house slippers. A Christmas stocking to gladden the heart of some child or even a bow tie for dad can be made from the scraps.

So much fun we have had in sharing our directions,
We hope you will soon make your own selections.
But be sure and remember, as you send for your yarns,
Order plenty of the same vat dye or you'll run into
harm.

Now we'd like to exclaim, ere you start your long haul,
Happy weaving this fall, and Merry Christmas, you all!

Order All Your HAND WEAVING
Supplies From the HAND WEAVERS' HEADQUARTERS

LILY MILLS COMPANY

SHELBY, N. C.