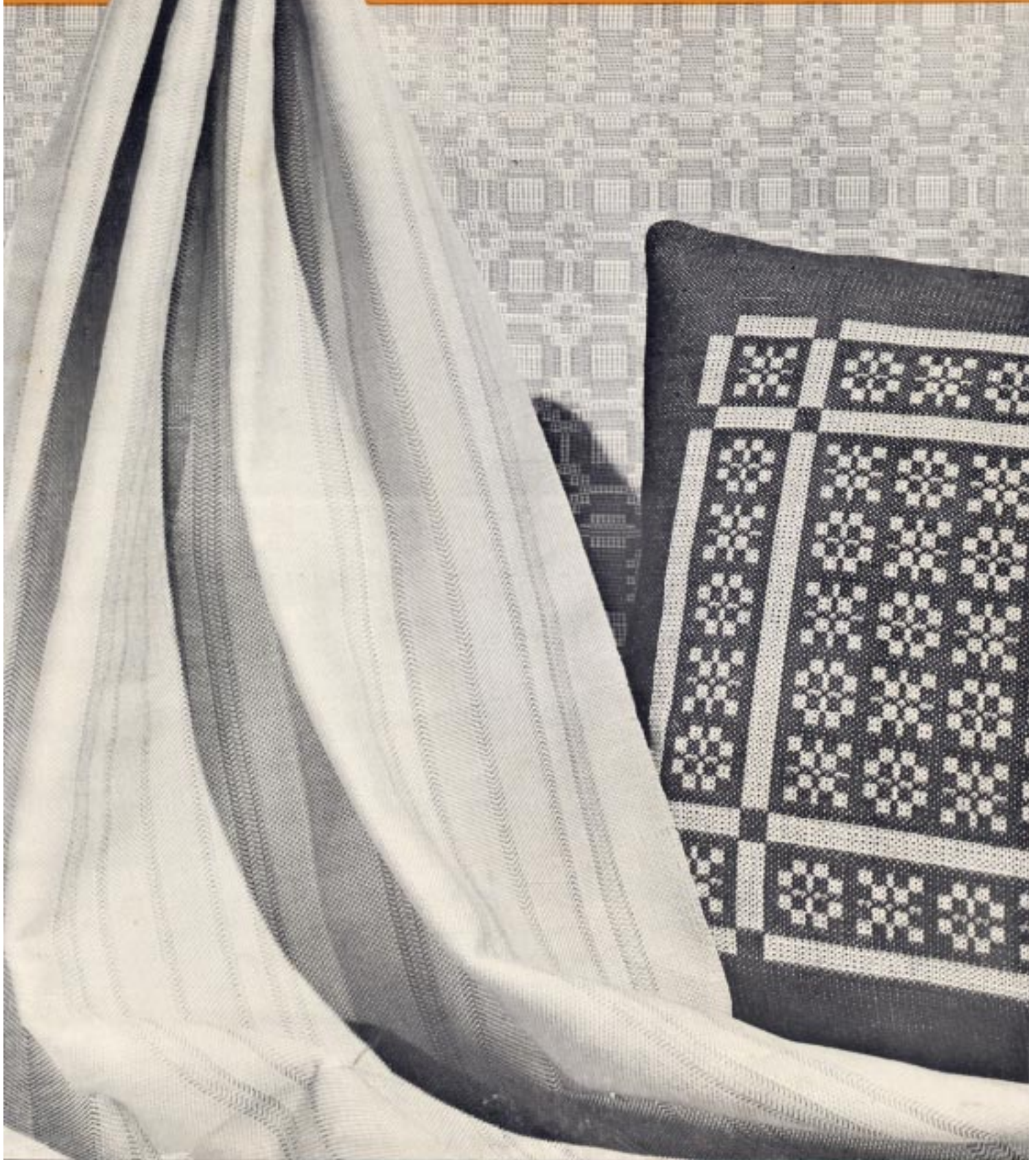


PRACTICAL WEAVING SUGGESTIONS

VOL. 4-60



Weaving Records

Rupert Peters

Experienced weavers keep careful records of every new piece of weaving they do. For doing this many have worked out special forms to be sure of including all necessary items. Most staple a small sample of the cloth to the reverse side of the card. While many of these records may never be used, one can never tell and it is well worth the time spent in making out the cards when one does want to set up the pattern again. It saves analyzing a piece of the desired cloth.

Beginners are at a loss as to how to keep such records. This bulletin shows such made by two experienced weavers using the notebook sheets recently put out by Lily Mills. Five different types of weaving are shown. Warp and weft yarns, sett of warp, threading draft, width in reed, treadling draft, etc., are given for each. This, with the picture of the sample, enables one to reproduce the original piece.

A recent incident shows the value of such records. A weaver hunted the house over for some notes on a crackle pattern but failed to find them. After days of stewing she borrowed the writer's crackle sample book and soon found what she needed.

It pays to keep records.

The designs featured in this bulletin are illustrated on the front and back covers as follows:

Drapery or Upholstery, page 3, left front cover
Cushion Cover, page 4, right front cover
Place Mat - Monk's Belt, page 5, center back cover
Place Mat - Log Cabin, page 6, right back cover
Place Mat - Isle of the Sea, page 7, center front and left back covers.

NOTE: Lily's new notebook record sheets are exactly as reproduced on the following pages. Prices and sample upon request.

Project Drapery or upholstery By Mary Virginia Munford Hand Weaver
 Source _____ Weave Twill Pattern Twills, basket weave
 Warp Lily Art. 114 Pearl Cotton 20/2 Dents in Reed 15 Thread from See below draft to X
#1460, 607 and 501 Ends per Dent 2 Thread from _____ to X
 Pattern Weft Lily Art. 114, Pearl Cotton 10/2 #1460 Total Warp Ends 792 Thread from _____ to X
Width in Reed 26½" Thread from _____ to X
 Tabby _____ Width Finished 25" Thread from _____ to X

NOTES: In the following draft x = topaz, o = light rust, v = jade

Write draft and draw-down below - Staple sample on the back

Thread A for the outside stripe. Then B, C, D, C, B and A. Make A 60 threads for all stripes save the marginal ones. This six-stripe repeat is threaded as many times as desired, four times here. Remember that the last stripe in the fourth repeat (A) is 42 threads only.

The treadling is straight twill; 1, 2, 5, 6 and repeat.

Aprons may be made by using 20/2 Pearl for weft at a sett of 36 to the inch.

By using the same color for weft as the background thread, the two other colors are muted to soft and pleasing tones whereas in the warp the contrast is stronger.

Many combinations of colors may be used as may different sizes of threads. In the latter case the sett must fit the size used.

But use strong colors except for the background thread. The strength is cut by the weave, the threading arrangement, and the use of the background color for weft.

Project **Mats** 14½" x 21½" By **Mary Virginia Munford** Hand Weaver
 Source **Finland** Weave **Overshot** Pattern **Monk's Belt**
 Warp **Lily Art. 314, Unmerc.** Dents in Reed **15** Thread from **A** to **B** X **12**
cotton, 20/2 White Ends per Dent **2** Thread from **B** to **C** X **1**
 Pattern Weft **Lily Art. 114** Total Warp Ends **442** Thread from to X
Merc. Floss #438,454,441 Width in Reed **14½** Thread from to X
 Tabby **Lily Art. 207,** Width Finished **14½** Thread from to X
Linen 10/1 White

NOTES:

Write draft and draw-down below - Staple sample on the back

TREADLING:

A. Weave 2½" plain weave with 10/1 linen for hem

B. Border #1, woven in plain weave.
 Weave 2 shots black floss
 4 shots white linen
 2 shots green floss
 3 shots red floss
 2 shots green floss
 4 shots white linen
 2 shots black floss

C. Weave 24 shots white linen in plain weave

D. Border #2. Use tabby of white linen with these pattern shots.
 Weave 6 shots of green floss on treadle 5
 4 shots of red floss on treadle 1
 4 shots of black floss on treadle 5
 4 shots of red floss on treadle 1
 6 shots of green floss on treadle 5

Repeat C, B, and C

E. Border #3. Use tabby of white linen
 Weave 6 shots of red floss on treadle 5
 4 shots of black floss on treadle 1
 6 shots of red floss on treadle 5

Repeat C.

Now repeat B, C, D, C, B, C, E, C to get the desired length. Remember that B, C, D, C, B and A must still be woven in order to make both ends alike. Measure these at the beginning for the necessary allowance.

Project Mats 16" x 20" By Mary Virginia Munford Hand Weaver

Source Worst Weave Crackle Pattern Isles of the Sea

Warp Lily Art. 114 Pearl Dents in Reed 12 Thread from A to C X 1

Cotton 20/2 #1451 Ends per Dent 3 Thread from C to D X 4

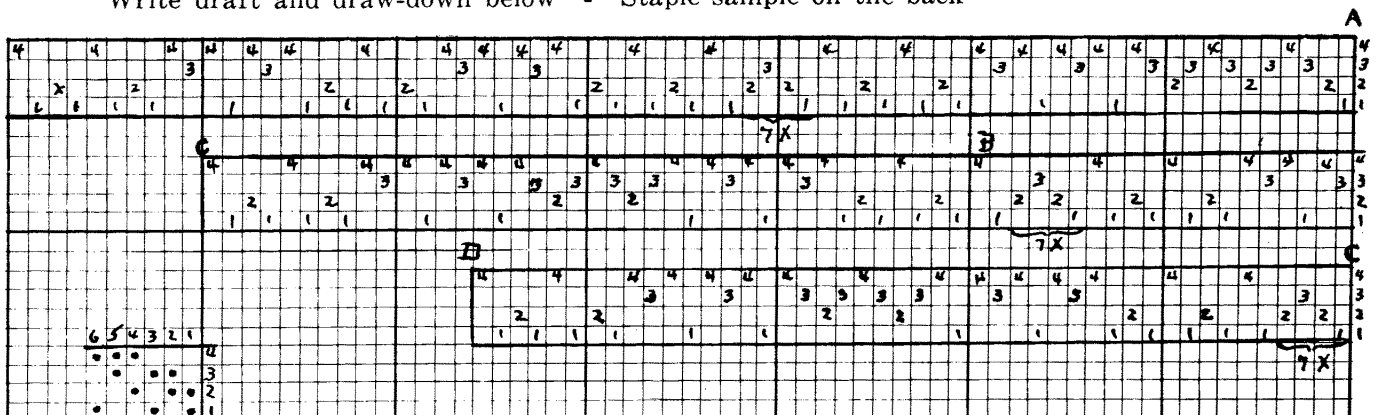
Pattern Weft Lily Art. 114, Total Warp Ends 599 Thread from B to A X 1

Mercerized Floss White Width in Reed 16 1/2" Thread from to X

Tabby Same as warp Width Finished 15 3/4" Thread from to X

NOTES: The original "Isles of the Sea" was C to D in the draft. Mr. Worst later added the pine tree border and called it "Isles of the Sea with Pine Tree Border." A to C is the border threading: C to D, the pattern.

Write draft and draw-down below - Staple sample on the back

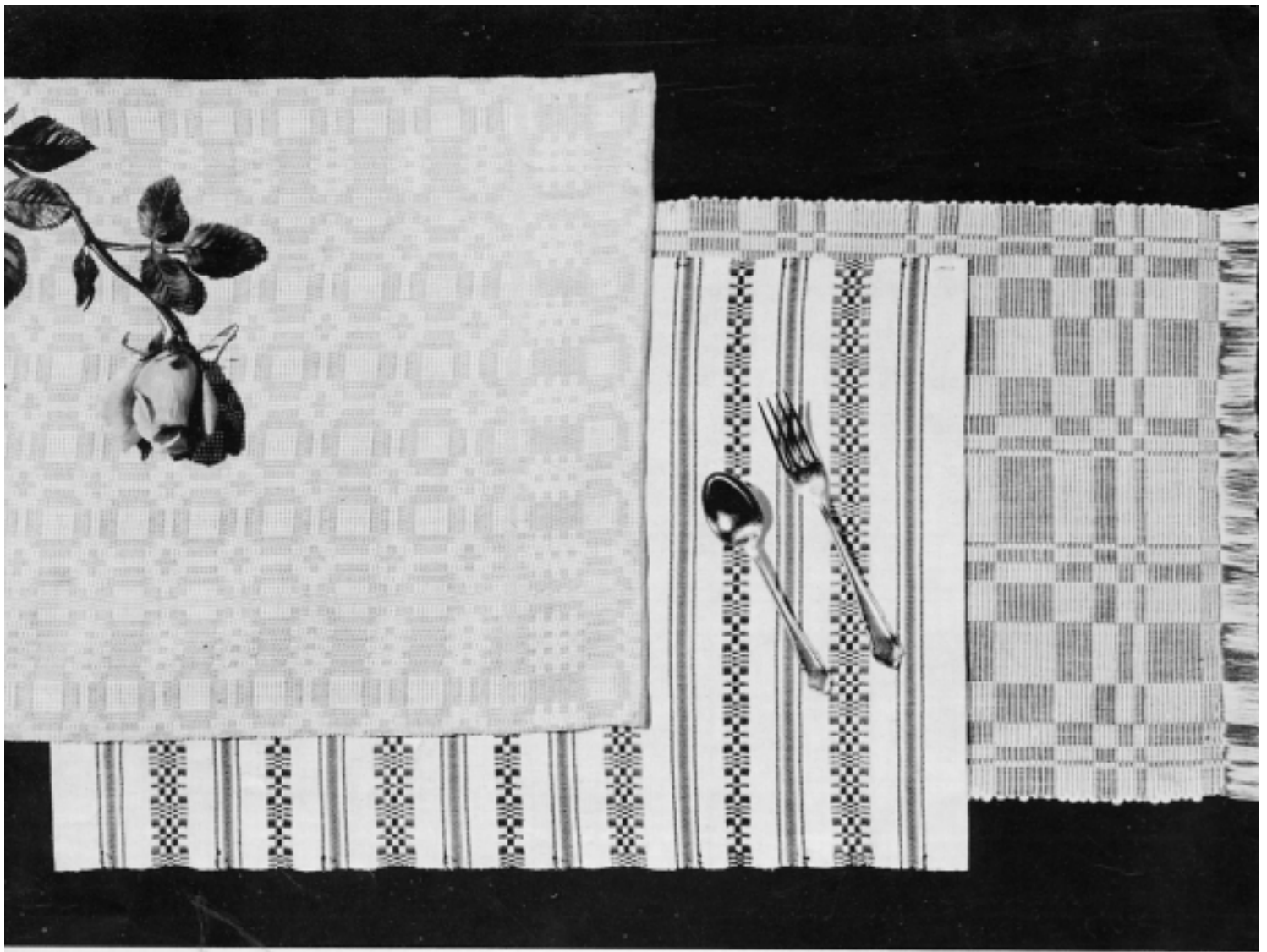


Treading is as in overshoot, alternate shots being tabby.

Treadle: Weave an inch in plain weave for hem.

- 1, 6, 5 -- 4 times each
- 2 -- 14 times. If necessary, add or drop a shot to make a square.
- 5, 6 -- 4 times each. Repeat 3 times.
- 5 -- 4 times
- 2 -- 5 times
- 6, 2, 6, 2, 6
- 2 -- 5 times
- 5 -- 4 times
- 6, 1, 6 -- 4 times each
- 5 -- 4 times
- 2 -- 14 times)
- 5 -- 4 times)
- 6, 1, 6 -- 4 times each) Repeat to desired length
- 5 -- 4 times)
- 2 -- 5 times
- 6, 2, 6, 2, 6
- 2 -- 5 times
- 5 -- 4 times
- 6, 5 -- 4 times each Repeat 3 times
- 2 -- 14 times
- 5, 6, 1 -- 4 times each

End with one inch in plain weave



Hand Weaving Yarns and Supplies

A wide variety of distinctive yarns is available for prompt shipments in quantities to suit your needs. Also looms and loom supplies.

FREE price list and catalog upon request.



LILY MILLS COMPANY **Shelby, North Carolina**